

MICHELIN XDR 250 RUN HARDER, KEEP COOL, GET MORE.



**THE MOST PRODUCTIVE TIRE WITH
AT LEAST 25%⁽¹⁾ MORE TKPH/TMPH.**

**GO FURTHER WITH
MICHELIN XDR 250
WITH AN EXCEPTIONAL
TIRE LIFE.**

(1) Compared to BRIDGESTONE 46/90 R 57 VRPS.
Data gathered from 2015 BS databook.



MICHELIN

A better way forward

MICHELIN XDR 250

50/80 R 57 E4**

**RUN HARDER,
KEEP COOL, GET MORE.**



HIGH LOAD

■ MICHELIN XDR 250 has **9.2%** more air volume than MICHELIN XDR 2 40.00 R 57



■ A tire with a higher air volume can carry more load:

+6,3% Vs BRIDGESTONE 46/90 R 57 VRPS/VREV

+11,6% Vs MICHELIN 40.00 R 57 XDR 2

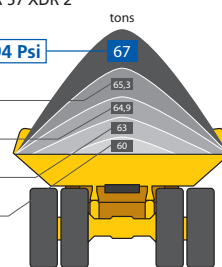
MICHELIN 50/80 R 57 XDR 250 94 Psi

ACTUAL MAX LOAD CAT 793F

ACTUAL MAX LOAD KOM 830E AC

BS 46/90 R 57 VRDP / VRPS 102 Psi

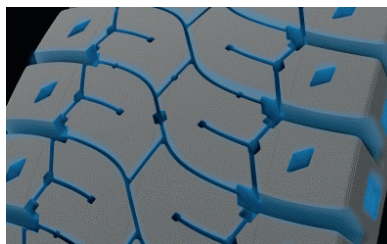
MICHELIN 40.00 R 57 XDR 2 87 Psi



A COOLER TIRE

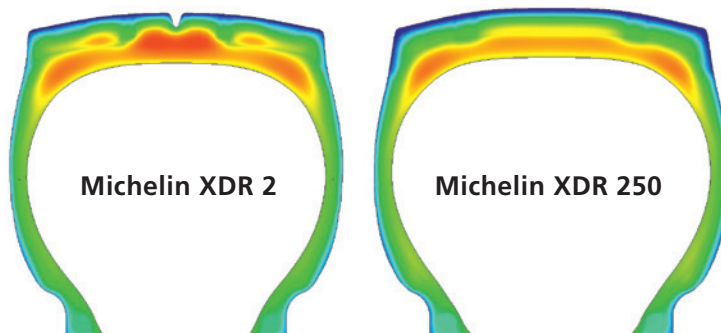
■ A new more ventilated tread pattern decreasing tire's temperature thanks to smaller blocks, more grooves => more voids for a perfect heat dispersion.

-8°C
IN THE CROWN
despite an increase
in load capacity⁽²⁾



(2) Confirmed at the CEMA, comparison of the 50/80 R 57 size (at the nominal load of the 50/80 R 57) with the 40.00 R 57 (at the nominal load of the 40.00 R 57)

■ A new more ventilated tread pattern disperses heat better than 40.00 R 57 XDR 2



MICHELIN XDR 250
50/80 R 57 E4**

***RUN HARDER,
KEEP COOL, GET MORE.***



EXCEPTIONAL TIRE LIFE

Go further with MICHELIN XDR 250 with innovations that last longer.

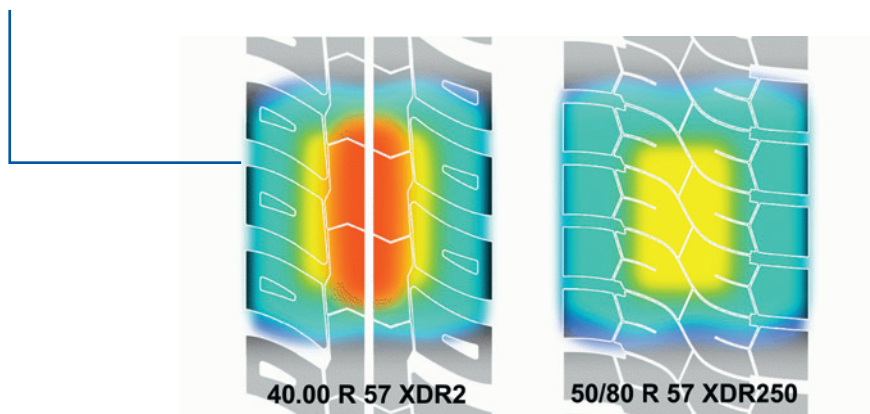


**SLOWER WEAR RATE NOTICED
BY WORLDWIDE CUSTOMER⁽³⁾**

(3) Average performances comparing like compounds measured from customer follow-up on all axles
(on 288 tires from 7 different sites vs XDR 2 40.00 R 57 and XDR 50/80 R 57, wear rate in hours per millimeter)

A new tread pattern design to offer a slower wear rate

- Increased rubber volume to be worn and have at the same time better heat dissipation
- Interlocking blocks of rubber on the shoulder that bring more rigid tread pattern in corners
- Better load distribution into the contact patch resulting lower contact pressure



50/80 R 57 MICHELIN XDR 250 C E4R **	CAI 195241
50/80 R 57 MICHELIN XDR 250 C4 E4R **	CAI 253293
50/80 R 57 MICHELIN XDR 250 B E4R **	CAI 274589
50/80 R 57 MICHELIN XDR 250 B4 E4R **	CAI 371742

Serviceplan I Michelin RCS 855 200 507 Clermont Ferrand - Photo credit: Michelin - June 2016



**More information: www.michelinearthmover.com
Michelin Earthmover Youtube**