

**MICHELIN® PRO LINE**

**EXTREME CONDITIONS  
DEMAND TOUGH TIRES.**



**NEW RANGE**

LOAD CAPACITY

+



+



RESISTANCE TO AGGRESSION

17.5R25 XMINED2 Pro CAI 720557  
 17.5R25 XSMD2+ Pro CAI 822869  
 18.00R25 XMINED2 Pro CAI 153322  
 18.00R25 XSMD2+ Pro CAI 003438  
 20.5R25 XMINED2 Pro CAI 539641  
 23.5R25 XMINED2 Pro CAI 813419

26.5R25 XSMD2+ Pro CAI 183806  
 26.5R25 XMINED2 Pro CAI 858472  
 29.5R25 XMINED2 Pro CAI 326526  
 29.5R29 XMINED2 Pro CAI 376767  
 29.5R29 XSMD2+ Pro CAI 819333

Serviceplan | Michelin RCS 855 200 507 Clermont Ferrand - Photos credits: Michelin, Stock - Juin 2018.

**EXTREME CONDITIONS  
DEMAND TOUGH TIRES.**



**MICHELIN® PRO LINE**

Improved aggression resistance and reduced downtime  
in the most extreme conditions.



[www.michelin.com](http://www.michelin.com)





# MICHELIN® PRO LINE EXTREME CONDITIONS DEMAND TOUGH TIRES.

**YOUR STAKES**  
SAFETY IS THE FIRST PRIORITY  
COST REDUCTION IS CRUCIAL  
PRODUCTIVITY IS PRECIOUS  
OUR NEEDS ARE VERY UNIQUE...

## OUR ANSWER

IMPROVED AGGRESSION RESISTANCE  
AND REDUCED DOWNTIME IN  
THE MOST EXTREME CONDITIONS

**MICHELIN®  
X MINE® D2 PRO**



**MICHELIN®  
XSM® D2+ PRO**



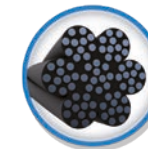
**INCREASED  
LOAD CAPACITY<sup>(1)</sup>**

**UP TO +18%  
OF LOAD CAPACITY<sup>(1)</sup>**  
DUE TO REINFORCED \*\*\*CASING



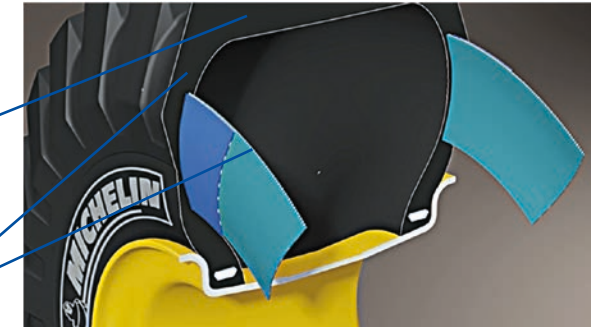
**IMPROVED AGGRESSION RESISTANCE<sup>(2)</sup>**

■ Due to new cables and NRF technology (reinforced sidewall plies)<sup>(2)</sup>



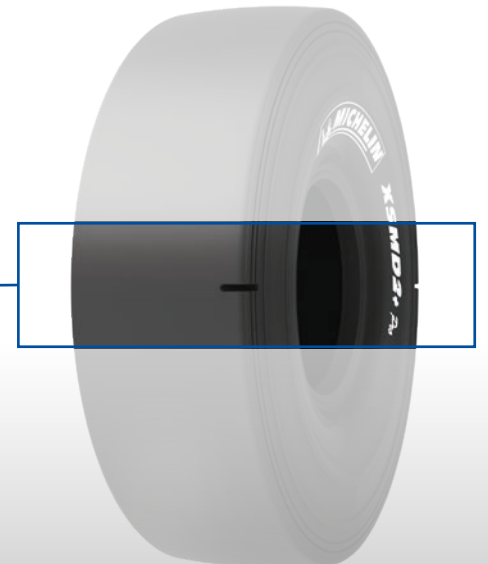
**New cables** in the working plies for more aggression resistance and protection against oxidation

**2 extra plies added** to tire construction which contain crossed nylon cords encased in rubber for greater resistance & toughness



**IMPROVED TIRE LIFE<sup>(3)</sup>**

**Improved tire life** thanks to optimized tread compounds<sup>(3)</sup>



(1) Based on comparisons of the MICHELIN® XSM® D2+ PRO and X MINE® D2 PRO to the MICHELIN® XSM® D2+ and MICHELIN® X MINE® D2, as set forth in the 2018 Michelin Data Book. Actual results may vary.  
(2) Based on computer modeling comparisons of the MICHELIN® XSM® D2 + PRO and X MINE® D2 PRO tires compared to MICHELIN® XSM® D2+ and MICHELIN® X MINE® D2 tires. Actual results may vary.  
(3) Based upon improved aggression resistance and on computer modeling comparing the tread compounds included in the MICHELIN® XSM® D2+ PRO to the MICHELIN® XSM® D2+. Actual results may vary.