

MICHELIN X STACKER 2 STACKS UP IN PERFORMANCE



**MAXIMIZE THE UPTIME
OF YOUR REACH
STACKER**



A better way forward

MICHELIN X STACKER 2 18.00 R 25

STACKS UP IN PERFORMANCE



RUN FASTER⁽¹⁾ AND...

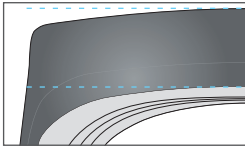


...LAST LONGER⁽²⁾!

ADAPTED TREAD DEPTH TO RUN FASTER

MICHELIN X STACKER 18.00 R 25

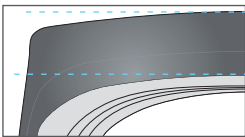
5KM
DISTANCE/HOUR



90mm

MICHELIN X STACKER 2 18.00 R 25

7KM
DISTANCE/HOUR



72mm

MICHELIN X STACKER 2
18.00 R 25 is an IND-5 tire:
tread code for extra deep
pattern.

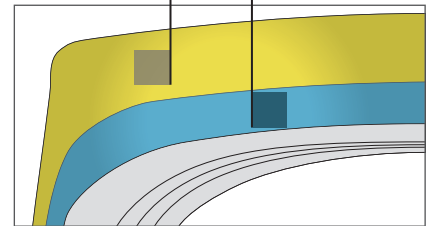
+40%⁽¹⁾
OF DISTANCE
PER HOUR

A DUAL COMPOUND TO RUN FASTER AND FOR LONGER WEAR LIFE

THE MICHELIN DUAL COMPOUND:

Type 1 rubber with
high wear-resistance

Type 2 rubber with
high heat-resistance



7%⁽²⁾
LONGER
WEAR LIFE

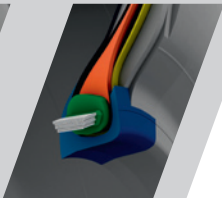
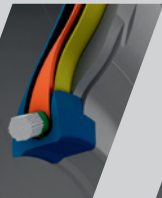


MORE ROBUST⁽¹⁾

IMPROVED OVERALL ROBUSTNESS OF THE TIRE

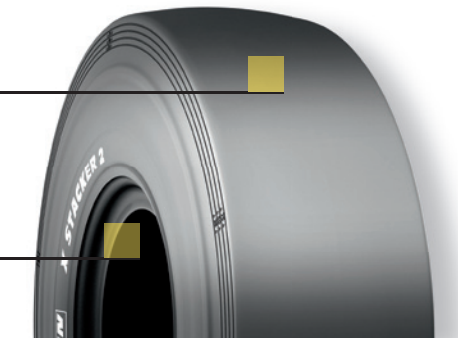
STANDARD
BEAD

MICHELIN BEAD
WITH B²
TECHNOLOGY



Higher crown endurance⁽¹⁾
with new improved structure

Excellent bead endurance
with the introduction
of B² Technology



MICHELIN X STACKER 2 18.00 R 25 TL 207 A5 CAI 101475

(1) Compared to MICHELIN X STACKER 18.00 R 25 .

(2) Compared to MICHELIN X STACKER 18.00 R 25, average performance by port site. Projected improvement in wear life based on field performance in customer port sites.



MICHELIN

A better way forward

More information: www.michelinearthmover.com
Michelin Earthmover Youtube