

MICHELIN® X® HA 2™ LONG LASTING PERFORMANCE!



LONG LASTING PERFORMANCE
POTENTIAL
OF MACHINES TO BE WORK
MICHELIN HAS
DEDICATED TESTING
CENTER ALMERIA SPAIN
TO DETERMINE
RESISTANCE
TO AGGRAVATIONS

OPTIMIZE YOUR OPERATIONAL
COST THANKS TO AN
EXCEPTIONAL TIRE LIFE



www.michelinearthmover.com



MICHELIN® X® HA 2™

OPTIMIZE YOUR OPERATIONAL COST THANKS TO AN EXCEPTIONAL TIRE LIFE.



+16% WEAR LIFE⁽¹⁾

The MICHELIN® X® HA 2™ lasts up to 16%⁽¹⁾ on average more hours compared to premium competitors.

Wear resistant rubber compound

More rubber to be worn⁽²⁾ MICHELIN® X® HA 2™:
+9,5% volume of tread rubber vs. BRIDGESTONE® VJT and
+4,6% vs BRIDGESTONE® VMT

Optimized contact patch with the ground

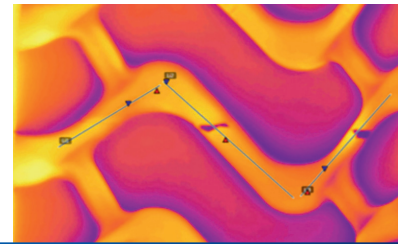


DESIGNED FOR AN EXCELLENT ENDURANCE

Heat is the number one enemy of a tire. If your tire runs cooler it will last longer. The tire has been designed to limit tread movement and so limit the effects of heat.



— 48.6°C – Bridgestone® VMT
— 47°C – Bridgestone® VJT
— 39.4°C – MICHELIN® X® HA 2™



MICHELIN® X® HA 2™ IS UP TO 19%⁽³⁾ VS BRIDGESTONE® VMT



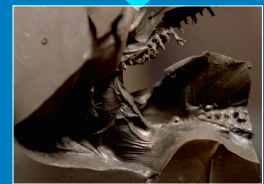
BETTER RESISTANCE TO AGGRESSIONS⁽⁴⁾

The Michelin tire is engineered with an architecture designed to absorb impact, minimizing damage, allowing your tire to continue working.

MICHELIN® X® HA 2™ HAS MORE SIDEWALL PUNCTURE RESISTANCE THAN BRIDGESTONE® VJT

MICHELIN® X® HA 2™

BRIDGESTONE® VJT



Superficial damage, no impact on the casing

The casing is destroyed, impossible to repair

17.5 R 25 MICHELIN® X® HA 2™ A L3 * 176A2	CAI 717545
20.5 R 25 MICHELIN® X® HA 2™ L3 * 186A2	CAI 899613
23.5 R 25 MICHELIN® X® HA 2™ L3 * 195A2	CAI 139147
26.5 R 25 MICHELIN® X® HA 2™ L3 ** 209A2	CAI 893825
29.5 R 25 MICHELIN® X® HA 2™ L3 ** 216A2	CAI 961307
875/65 R 29 MICHELIN® X® HA 2™ L3 * 214A2	CAI 936624



OUR WEBSITE
michelinearthmover.com



TESTIMONIALS
YouTube channel



PRESSURE ADVISOR
pressureadvisor.michelinearthmover.com

(1) Compared to Premium competitors (Good Year® RT-3B, TL3A+ and BRIDGESTONE® VMT and VJT), field study in real life conditions made by Michelin for 5 years 2012-2017, on 170 tires in Eastern Europe, Western Europe, China and Asia South Pacific; same size (23.5 R25, 26.5 R25 and 29.5 R 25) and same usage.

(2) Measurement certified by the Michelin Center of Technology, using XAO software, comparison of MICHELIN® X® HA 2™ 26.5 R 25 against BRIDGESTONE® VMT and BRIDGESTONE® VJT, same size.

(3) Measurement certified by the Michelin Center of Technology, conducted at the Mining Testing Center in Almeria, Spain, in July 2016. Thermal measurements taken using a thermal imaging camera. Comparison of MICHELIN® X® HA 2™ 26.5 R 25 against BRIDGESTONE® VMT/VJT 26.5 R 25. All tires followed the same protocols and configuration (temperature, track), same number of tires tested. Test organized using a CAT 966 M, at 15km/h with 12000kg of load, at 4 bars pressure.

(4) Test certified by Michelin Center of Technology, conducted at the Mining Testing Center in Almeria, Spain, in July 2016. Comparison of MICHELIN® X® HA 2™ against BRIDGESTONE® VJT, same size. All tires followed the same protocols and configuration, same number of tires tested. Test organized using a CAT 966 M, at 15 km/h, with 12000 kg of load, at 4 bars pressure.