



MICHELIN

MICHELIN® TRUCK TIRE REFERENCE CHART



www.michelintruck.com

TABLE OF CONTENTS

STEER / ALL-POSITION TIRES	3	X ONE® LINE GRIP D	16
X® LINE ENERGY Z	3	XDN®2 GRIP	16
X® LINE ENERGY Z - 295	3	XDA®5+	17
X® LINE ENERGY Z coach	4	X® MULTI D	17
X® MULTI Z - 275	4	X® MULTI D 19.5	18
XRV®	4	X® MULTI D 295	18
XZA®	5	X® MULTI ENERGY D	19
XZA2® ENERGY	5	XDS®	19
X® COACH HL Z	5	XDS®2 19.5	19
X® MULTI ENERGY Z	6	XDS®2 Standard Sizes	20
X® MULTI Z 17.5	6	XPS TRACTION®	20
X® MULTI Z 19.5	6	X® INCITY GRIP D SL	20
X® MULTIWAY 3D XZE®	7	X® WORKS GRIP D	21
X® MULTIWAY HD XZE®	7	X® WORKS XDY®	21
X ONE® XZU®S	8	XDY-EX2™	21
XFE WIDE BASE (STEER)	8		
XPS RIB®	8	TRAILER TIRES	22
XZA® 17.5	9	X® LINE ENERGY T	22
XZE®	9	X® LINE ENERGY T 19.5	22
XZE 2™ STANDARD SIZES	9	XTA®2 ENERGY	22
XZU®S2	10	X ONE® LINE ENERGY T	23
X® INCITY Z	10	X® MULTI T 17.5	23
X® INCITY Z SL	10	X® MULTI T2	23
AGILIS® CROSSCLIMATE®	11	X ONE® MULTI ENERGY T	24
XZY® 3 WIDE BASE	11	XTA®	24
X ONE® XZY®3	12	XTE®	24
X® WORKS Z	12	XTE2®	25
XZL™	13	XTE2® +	25
XZL+™	13	XTY®2	25
XZL™ WIDE BASE	13		
DRIVE TIRES	14	PRODUCT AVAILABILITY	26
X ONE® LINE ENERGY D	14	LINE HAUL	26
X® LINE ENERGY D	14	REGIONAL	28
XDA® ENERGY+	15	URBAN	30
XDN®2	15	ON/OFF ROAD	31
		OFF ROAD	31

Michelin North America, Inc. continually updates its product information to reflect any changes in Industry Standards. Printed material may not reflect the current Load and Inflation information.

Please visit www.michelintruck.com for the latest product information. The actual load and inflation pressure used must not exceed the wheel manufacturer's maximum conditions. Never exceed a wheel manufacturer's limits without permission from the component manufacturer.

STEER / ALL-POSITION TIRES

X[®] LINE ENERGY Z

Our best just got better. The MICHELIN[®] X LINE ENERGY Z tire is guaranteed to deliver 20% more mileage vs. leading competitor line haul steer tires⁽¹⁾ and 5% better rolling resistance than the MICHELIN[®] XZA3[®]+ EVERTREAD[®] tire⁽²⁾ it replaces.

- Get more mileage without compromising fuel efficiency with the patent-pending Dual Compound Tread.
- Even wear to the end of tread life due to directional miniature sipes in the groove walls (directional to half life).
- Approved for use on EPA SmartWay[®] certified equipment and meets California CARB requirements.
- 7/7/3 manufacturer's limited casing warranty⁽³⁾

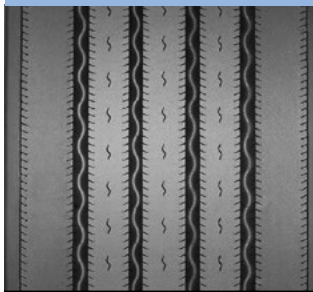
Sizes	Load Range	Tread Depth	MSPN
11R22.5	G	19	03363
11R22.5	H	19	06697
275/80R22.5	G	19	03885
275/80R22.5	H	19	66205
11R24.5	H	19	18748
275/80R24.5	H	19	81281

(1) Please see MichelinTruck.com > Reference Materials > Warranties/Guarantees for details.

(2) Based on internal rolling resistance tests using ISO 28580 in tire size 275/80R22.5.

(3) 7/7/3 Manufacturer's Limited Casing Warranty: 7 Year or 700,000 Mile or 3-Retread Limited Warranty for MICHELIN[®] X[®] LINE ENERGY Z tire when retreaded by an authorized Michelin Retread Technologies (MRT) Dealer only. See limited warranty for details.

LINE HAUL & BUS/RV



LINE HAUL REGIONAL URBAN ON/OFF ROAD

Directional tread



7 Year

7 YEAR or 700,000 MILE or 3-RETREAD MANUFACTURER'S LIMITED CASING GUARANTEE

X[®] LINE ENERGY Z - 295

An ultra fuel efficient, all position tire that also provides high mileage and enhanced casing durability.

- Infini-Coil[™] Belt Technology – Optimizes the shape of the contact patch for longer tread life and strengthens the crown against shocks and impacts.
- Advanced Tensile Technology – Helps to improve the strength of the belt package.
- Shock Pad – An increased layer of protection between the protector ply and the belt package to help absorb the forces of impacts and shocks.
- 17% improvement in wear life versus the MICHELIN[®] XZA[®]2 Energy tire in the 295/60R22.5 LRJ size.⁽¹⁾

Improved Compounding – Helps combining the latest Michelin Advanced Technology compounds and innovative tread design features to deliver increased removal miles.

- Better Miles per Gallon – 26% reduction in rolling resistance compared to the MICHELIN[®] XZA[®]2 Energy tire.⁽²⁾
- Syphon Groove – A new regenerating tread design that at 5/32nds fully exposes two additional circumferential grooves, which increases the ability to evacuate liquid material in later tread life.

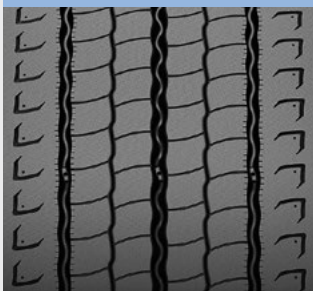
Sizes	Load Range	Tread Depth	MSPN
295/60R22.5 ⁽³⁾	J	14	35378

(1) Based on Michelin internal wear tests and extrapolation for tire size 295/60R22.5. Actual results may vary.

(2) Michelin internal testing.

(3) "No bus shall be operated with regrooved, recapped or retreaded tires on the front wheels." US Code of Federal Regulations: Title 49, Transportation; Part 393.75.

LINE HAUL, REGIONAL & BUS/RV



LINE HAUL REGIONAL URBAN ON/OFF ROAD

STEER / ALL-POSITION TIRES

X® LINE ENERGY Z COACH

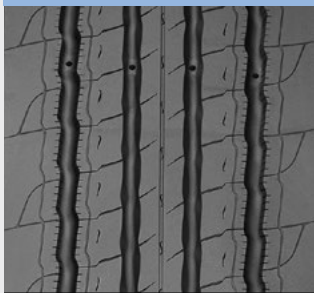
Improved fuel-efficient⁽¹⁾, all position service in long distance applications such as Highway Coach.⁽²⁾

- The MICHELIN® X® LINE ENERGY Z tire new tread compound generated a 7% reduction in rolling resistance versus the MICHELIN® XZA®2 ENERGY 315/80R22.5 tire.
- Groove Wall Miniature Sipes – Helps fight irregular wear to improve mileage.
- Increased Net Contact Area – 3% greater contact area versus the MICHELIN® XZA®2 ENERGY tire meaning more rubber on the road.
- Zig-Zag Grooves – Improves traction in new and worn tire conditions.
- Full Width Elastic Protector Ply – Helps protect against penetrations, impacts breaks, and shocks for maximum casing durability.

Sizes	Load Range	Tread Depth	MSPN
315/80R22.5	L	17	09807

- (1) Based on industry standard rolling resistance testing of comparable tires or retreads. Actual results may vary, and may be impacted by many factors, to include road conditions, weather and environment, driver performance, etc.
 (2) "No bus shall be operated with regrooved, recapped or retreaded tires on the front wheels." US Code of Federal Regulations: Title 49, Transportation; Part 393.75.

LINE HAUL & BUS/RV



LINE HAUL	REGIONAL	URBAN	ON/OFF ROAD
-----------	----------	-------	-------------

X® MULTI Z - 275

Improved all-position radial optimized for RV chassis⁽¹⁾ and specialty trailer in regional and line haul applications.

- 15% improvement in rolling resistance for improved wear and fuel savings.⁽²⁾
- 9% greater net contact area for improved grip.⁽²⁾
- Exceptional traction from zig zag sipe design which delivers outstanding wet grip on slippery surfaces.
- Outstanding resistance to stone damage due to groove bottom protectors as well as angled groove walls to reduce stone retention.

Sizes	Load Range	Tread Depth	MSPN
275/70R22.5	J	18	31513

- (1) "No bus shall be operated with regrooved, recapped or retreaded tires on the front wheels." US Code of Federal Regulations: Title 49, Transportation; Part 393.75.
 (2) Based on MICHELIN® X® MULTI Z tire versus MICHELIN® XZE2+® tire in size 275/70R22.5.

LINE HAUL, REGIONAL, & BUS/RV



LINE HAUL	REGIONAL	URBAN	ON/OFF ROAD
-----------	----------	-------	-------------

XRV®

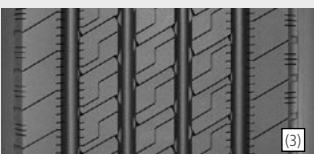
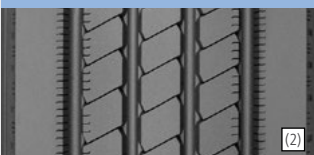
All-position radial designed specifically for exceptional performance on recreational vehicles and motor homes in coach applications.⁽¹⁾

- Wide, "see-through" grooves promote drainage efficiency to help improve traction on wet surfaces.
- Multi-siping helps deliver dependable grip and long, even wear.
- Enlarged sidewall characters make load/pressure information easier to read, facilitating proper use and maintenance.
- Stable tread with cool running compound helps generate reduced squirm and lower heat for improved handling and durability.

Sizes	Load Range	Tread Depth	MSPN
235/80R22.5 ⁽¹⁾	G	16	87511
255/80R22.5 ⁽¹⁾	G	16	59634
305/70R22.5 ⁽²⁾	L	16	93499

- (1) "No bus shall be operated with regrooved, recapped or retreaded tires on the front wheels." US Code of Federal Regulations: Title 49, Transportation; Part 393.75
 (2) Standard Sizes
 (3) 305/70R22.5

LINE HAUL & BUS/RV



LINE HAUL	REGIONAL	URBAN	ON/OFF ROAD
-----------	----------	-------	-------------

STEER / ALL-POSITION TIRES

XZA®

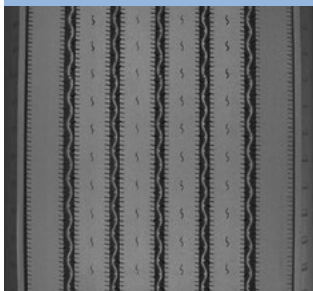
Fuel-efficient,⁽¹⁾ all-position radial designed for long life steer axle service in line haul applications.

- No compromise rolling resistance delivered with Advanced Technology Compound, offering low rolling resistance with no compromise in wet traction, mileage, durability and even wear.
- Wet traction is improved using 3,000 trapezoidal micro sipes on the groove edges to help break water surface tension.
- Extra casing protection and stability comes from a five steel belt construction.
- Infini-Coil™ incorporates over 1/4 mile of steel cable to help eliminate casing growth and ensure a consistent footprint.

Sizes	Load Range	Tread Depth	MSPN
365/70R22.5	L	19	52215

(1) Based on industry standard rolling resistance testing of comparable tires or retreads. Actual results may vary, and may be impacted by many factors, to include road conditions, weather and environment, driver performance, etc.

LINE HAUL & BUS/RV



LINE HAUL	REGIONAL	URBAN	ON/OFF ROAD
-----------	----------	-------	-------------

XZA2® ENERGY

Fuel-efficient,⁽¹⁾ all-position radial designed for long life steer axle service in line haul applications.⁽²⁾

- Unique intermediate rib design helps combat the onset of irregular wear in highway service.
- Exceptional handling and responsiveness through optimized shoulder design.
- Traction and lateral control offered by miniature sipes and variable groove angles.
- Approved for use on EPA SmartWay® certified equipment and meets California's CARB requirements.

Sizes	Load Range	Tread Depth	MSPN
295/80R22.5 ⁽²⁾	H	16	76807

(1) Based on industry standard rolling resistance testing of comparable tires or retreads. Actual results may vary, and may be impacted by many factors, to include road conditions, weather and environment, driver performance, etc.

(2) "No bus shall be operated with regrooved, recapped or retreaded tires on the front wheels." US Code of Federal Regulations: Title 49, Transportation; Part 393.75.

LINE HAUL & BUS/RV



SmartWay®
Verified



LINE HAUL	REGIONAL	URBAN	ON/OFF ROAD
-----------	----------	-------	-------------

X® COACH HL Z

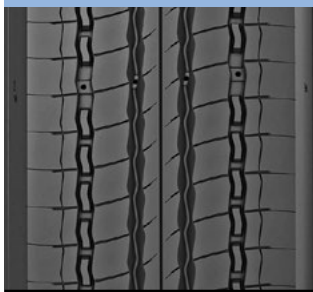
Increased load capacity without compromising mileage, in an all-position tire designed for line haul and regional bus applications.⁽¹⁾

- Increased load capacity – 7.5 tons for axles with single tires – due to patented Infini-Coil™, improved distribution of pressure across the tire width, and wide shoulder ribs.
- Exceptional handling from 4 wide longitudinal grooves and wide shoulder ribs.
- Extended casing life due to Infini-Coil™, a rectangular bead bundle, and full width protector ply.

Sizes	Load Range	Tread Depth	MSPN
295/80R22.5	H	18	31078

(1) "No bus shall be operated with regrooved, recapped or retreaded tires on the front wheels." US Code of Federal Regulations: Title 49, Transportation; Part 393.75.

REGIONAL & BUS/RV



LINE HAUL	REGIONAL	URBAN	ON/OFF ROAD
-----------	----------	-------	-------------

STEER / ALL-POSITION TIRES

X® MULTI ENERGY Z

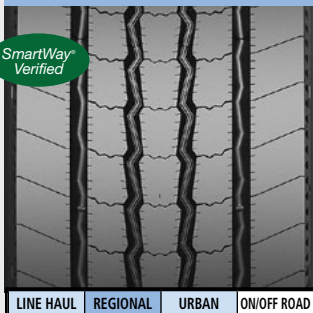
Engineered for SmartWay® verified fuel efficiency, long tread life and durability in regional and emerging super regional applications.

- 15% reduction in rolling resistance compared to MICHELIN® XZE 2™ tire. Benefit is delivered with new Energy Casing technology that provides a cool running sidewall and bead for low rolling resistance.
- No compromise fuel efficiency and mileage is delivered using Michelin's Dual Compound Tread technology, featuring a top wear layer of tread over a fuel and durability bottom layer.
- Excellent mileage comes from the Dual Compound Tread and the tread sculpture design. This combination provides outstanding mileage in regional applications, as well as in emerging super regional applications that combine highway and regional driving.
- Casing life is extended with curb guards to protect the sidewalls from impacts and abrasions, groove bottom protectors to help prevent stone-drilling, and a full width elastic protector ply to protect the casing.

REGIONAL



SmartWay®
Verified



LINE HAUL REGIONAL URBAN ON/OFF ROAD

Directional tread

Sizes	Load Range	Tread Depth	MSPN
11R22.5	H	20	03168
275/80R22.5	H	20	26902

X® MULTI Z 17.5

All position radial tire optimized for steer axles on 4x2 delivery vehicles in regional and urban applications.⁽¹⁾

- 12% Improvement in Rolling Resistance⁽²⁾ – New tread compound for lower rolling resistance and improved wear.
- Improved Grip – 6% greater net contact area (more rubber on the road).⁽³⁾
- Casing Durability – Extra strong curb guards help protect sidewalls against most impacts and abrasions for long casing life.

Directional tread



Sizes	Load Range	Tread Depth	MSPN
215/80R17.5	G	14	25151

REGIONAL



LINE HAUL REGIONAL URBAN ON/OFF ROAD

(1) "No bus shall be operated with regrooved, recapped or retreaded tires on the front wheels." US Code of Federal Regulations: Title 49, Transportation; Part 393.75.

(2) 12% improvement in rolling resistance versus the 215/75R17.5 MICHELIN® XZE®2 LRG tire.

(3) 6% greater net contact area (rubber on the road for improved grip) versus the 215/75R17.5 MICHELIN® XZE®2 LRG tire.

(4) Meets the USTMA (U.S. Tire Manufacturers Association) snow traction performance requirements. Meets the Tire and Rubber Association of Canada (TRAC) requirements for severe snow traction.

X® MULTI Z 19.5

An all position radial tire optimized for a wide spectrum of regional applications.

- Increased Fuel Efficiency⁽¹⁾ – New tread compound lowers rolling resistance by 9% versus the MICHELIN® XZE®2+ tire.
- Reduced Irregular Wear – Directional tread design helps to reduce irregular wear.
- Enhanced Casing Life – Groove bottom protectors and stone ejectors help to reduce stone drilling to extend casing life.
- Extended Casing Life – Four-belt package helps to protect against shocks, impacts and road hazards.

SmartWay®
Verified



Sizes	Load Range	Tread Depth	MSPN
265/70R19.5	G	16	75319
285/70R19.5	H	16	31459

REGIONAL & BUS/RV



LINE HAUL REGIONAL URBAN ON/OFF ROAD

Directional tread

(1) Based on industry standard rolling resistance testing of comparable tires or retreads. Actual results may vary, and may be impacted by many factors, to include road conditions, weather and environment, driver performance, etc.

(2) Meets the USTMA (U.S. Tire Manufacturers Association) snow traction performance requirements. Meets the Tire and Rubber Association of Canada (TRAC) requirements for severe snow traction.

Exceeding the legal speed limit is neither recommended nor endorsed.

Recommended Acceptable

STEER / ALL-POSITION TIRES

X® MULTIWAY 3D XZE®

Improved fuel economy and mileage in an all-position tire for regional and coach applications.⁽¹⁾

- Outstanding driving safety from improved braking, that reduces braking distances by 25%⁽²⁾ and excellent traction from full-depth 3D Sipes that deliver improved grip⁽³⁾ in challenging conditions.
- Outstanding fuel economy delivers 0.2 gallons per 100 miles in fuel savings⁽⁴⁾, using an optimized tread design and materials.
- Tread life is improved 15% for front tires and 30% for rear tires⁽⁴⁾ through use of a directional tread and optimized tread design.
- Full Width Elastic Protector Ply protects against penetrations, impacts breaks and shocks for maximum casing durability.

Sizes	Load Range	Tread Depth	MSPN
295/80R22.5	H	19	07719
315/80R22.5 ⁽⁶⁾	L	21	24903

(1) "No bus shall be operated with regrooved, recapped or retreaded tires on the front wheels." US Code of Federal Regulations: Title 49, Transportation; Part 393.75.

(2) Internal Michelin study. Vehicle fitted with MICHELIN® X® MULTIWAY 3D XZE® tire two-thirds worn compared with similarly worn MICHELIN® XZE®2+ tire for emergency braking (18 mph to 0 mph) on a wet, smooth, concrete surface.

(3) Compared to MICHELIN® XZE®2+ tires.

(4) Internal Michelin simulation, MICHELIN® X® MULTIWAY 3D XZE® tires compared to MICHELIN® XZE®2+ tires.

(5) Meets the USTMA (U.S. Tire Manufacturers Association) snow traction performance requirements. Meets the Tire and Rubber Association of Canada (TRAC) requirements for severe snow traction.

(6) Not approved for use with 8.25 wheel.

REGIONAL & BUS/RV



LINE HAUL REGIONAL URBAN ON/OFF ROAD

Directional tread



X® MULTIWAY HD XZE®

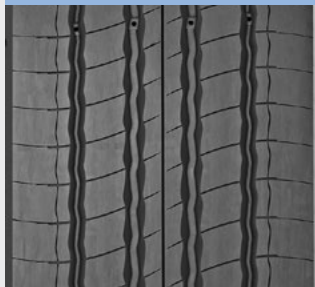
Improved mileage and exceptional handling, this all position tire delivers a smooth quiet ride and long life for heavy delivery vehicles in regional and suburban service.

- Improved load carrying capacity and longevity provided by Michelin's patented Infini-Coil™.
- Enhanced vehicle stability and even wear with a 7% wider footprint increasing total rubber on the road by 11% versus the MICHELIN® XFE tire.
- Excellent mileage and even wear provided by chip & cut resistant tread compounds.
- Improved fuel efficiency due to a 13% reduction in rolling resistance.⁽¹⁾
- Resistant to aggressions, impacts and shocks through robust 5 belt casing design.

Sizes	Load Range	Tread Depth	MSPN
385/65R22.5	L	19	26281

(1) Based on commissioned third-party green house gas testing comparing the MICHELIN® X® MULTIWAY HD XZE® to the MICHELIN® XFE. Actual on-road results may vary. Note: Wheel listed first is the measuring wheel.

REGIONAL



LINE HAUL REGIONAL URBAN ON/OFF ROAD

STEER / ALL-POSITION TIRES

X ONE® XZU®S

All-position next generation wide base single designed for significant weight and fuel savings⁽¹⁾ in urban applications.

- Long tread life and outstanding scrub resistance in Urban/Regional service with 23/32nds original tread depth of application-specific compound.
- Flat, stable contact area for long, even wear provided by Michelin's Infini-Coil™, featuring a 1/4 mile of steel cable to help eliminate casing growth.
- Enhanced protection against stone drilling from variable pitch groove walls and groove bottom protectors in all grooves.
- Great bead durability and resistance to heat from reinforced bead package featuring a wide metallic chafer.

Sizes	Load Range	Tread Depth	MSPN
455/55R22.5	M	23	28513

(1) Based on industry standard rolling resistance testing of comparable tires and retreads. Actual results may vary, and may be impacted by many factors, to include road conditions, weather and environment, driver performance, etc.

REGIONAL & URBAN



LINE HAUL REGIONAL URBAN ON/OFF ROAD

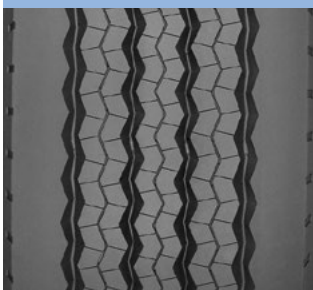
XFE WIDE BASE (STEER)

The wide base single designed to deliver high mileage and a quiet ride on heavy front axle in regional and line haul applications.

- Dual-compound tread rubber helps ensure cool operating temperatures, while abrasion-resistant rubber compound helps keep tire wear rate low.
- Deep, wide channels help provide excellent water evacuation throughout the life of the tire.
- Lateral siping along rib edges help enhance traction and braking in adverse weather conditions.
- Robust crown design with four-steel belt package.

Sizes	Load Range	Tread Depth	MSPN
425/65R22.5	L	21	11829

REGIONAL



LINE HAUL REGIONAL URBAN ON/OFF ROAD

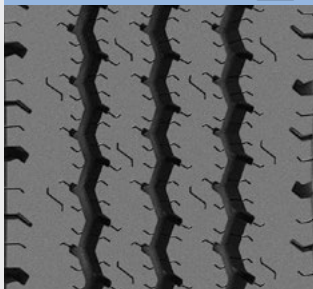
XPS RIB®

All-steel, all-wheel-position highway rib light truck tire designed to deliver exceptional mileage and retreadability for commercial/fleet operations.

- Steel casing, reinforced steel bead helps deliver exceptional retreadability.
- Third steel belt helps provide puncture resistance for enhanced durability.
- Optimized rib tread designed to provide even tread wear and long mileage with low noise level.
- Sidewall protector helps provide resistance to sidewall damage from most curb scrubbing.
- Low rolling resistance casing and tread built for superior fuel economy.

Sizes	Load Range	Tread Depth	MSPN
LT215/85R16	E	15	39510
LT225/75R16	E	14	08404
LT235/85R16	E	15	13080
LT245/75R16	E	15	26848

REGIONAL & BUS/RV



LINE HAUL REGIONAL URBAN ON/OFF ROAD

STEER / ALL-POSITION TIRES

XZA® 17.5

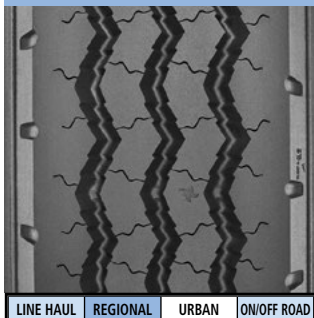
Fuel-efficient⁽¹⁾, all-position radial designed for long life steer axle service in line haul applications.

- Massive shoulders and application specific compound help resist scrub and abrasion, extending tread life.
- Zigzag groove design for true all-position use.

Sizes	Load Range	Tread Depth	MSPN
10R17.5	G	16	05008

(1) Based on industry standard rolling resistance testing of comparable tires or retreads. Actual results may vary, and may be impacted by many factors, to include road conditions, weather and environment, driver performance, etc.

REGIONAL



LINE HAUL REGIONAL URBAN ON/OFF ROAD

XZE®

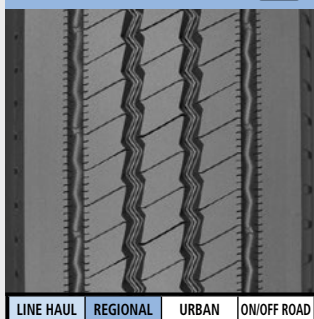
Exceptional all-position radial with extra-wide, extra-deep tread designed to help deliver our best wear in high scrub regional and line haul applications.

- Beefy, buttressed shoulders help resist tearing and accelerated wear in high scrub applications.
- Extra strong curb guards help protect sidewalls against most impacts and abrasions for long casing life.
- Groove bottom protectors help deliver additional defense against stone drilling.
- Application specific, high scrub compound (chip and cut resistant in versions with * designation) make the MICHELIN® XZE® our longest wearing regional steer tire.
- Deep, wide tread and optimized footprint shape help deliver long, even tread wear.

Sizes	Load Range	Tread Depth	MSPN
225/70R19.5	G	17	91043
245/70R19.5	H	18	75997
10R22.5	G	21	99141
12R22.5 *	H	22	85335
255/70R22.5 *	H	18	61737
275/80R22.5	H	22	01637

(1) * With chip and cut resistant tread compound.

REGIONAL & BUS/RV



LINE HAUL REGIONAL URBAN ON/OFF ROAD

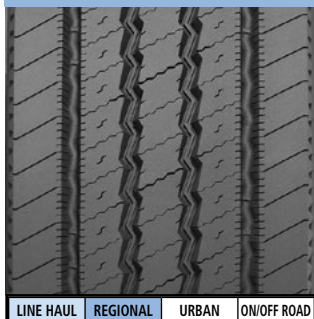
XZE 2™ STANDARD SIZES

Exceptional regional, all-position radial with extra-wide, extra-deep tread designed to help deliver our best wear in high scrub regional and line haul applications.

- Enhanced application-specific compound to help promote resistance to aggressions and longer tread life.
- 6% wider tread for improved wear and handling (when compared to MICHELIN® XZE® tire).
- Matrix™ and micro sipes protect against irregular wear.
- Zig-zag grooves and sipes help increase traction in new and worn tire conditions.
- North American design.

Sizes	Load Range	Tread Depth	MSPN
11R22.5	G	22	78390
11R22.5	H	22	67042
275/80R22.5	G	22	55895
11R24.5	G	22	91867
11R24.5	H	22	88507
275/80R24.5	G	22	75519

REGIONAL & BUS/RV



LINE HAUL REGIONAL URBAN ON/OFF ROAD

Exceeding the legal speed limit is neither recommended nor endorsed.

Recommended Acceptable

STEER / ALL-POSITION TIRES

XZU®S2

Next generation all-position tire with high carrying capacity designed for exceptional treadlife in high scrub urban applications such as waste vehicles.

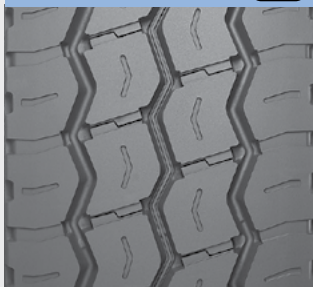
- Get up to a 20% increase in removal miles⁽¹⁾.
- Maximize mileage and casing life with Co-Ex Technology.
- Get improved retreadability⁽¹⁾ – Protect the belt package from shocks and impacts with shock pads.
- Maximum sidewall protection provided by aggressive protector ribs.

Sizes	Load Range	Tread Depth	MSPN
315/80R22.5 ⁽²⁾	L	23	77510

(1) When compared to the MICHELIN® XZU®S tire.

(2) Not approved for use with 8.25 wheel.

REGIONAL & URBAN



LINE HAUL REGIONAL URBAN ON/OFF ROAD

X® INCITY Z

Improved mileage⁽¹⁾ and durability in an all-position tire designed for the challenges of urban conditions.⁽²⁾

- Delivers 20% longer tread life!⁽³⁾
- Extra Thick Sidewall – Strong protection against shocks, impacts and curb scrub.
- Driver confidence delivered through the outstanding traction and even wear of Matrix™ Siping's full depth, interlocking sipes with zig-zag walls – providing thousands of biting edges for traction.
- Casing life is extended through the heat reducing impact of the rectangular bead bundle and an extended metallic chafer ply that protects against mounting damage and brake heat.

Sizes	Load Range	Tread Depth	MSPN
11R22.5	H	20	13712
275/70R22.5	J	21	59714
305/70R22.5	L	22	02348

URBAN



LINE HAUL REGIONAL URBAN ON/OFF ROAD



(1) Compared to MICHELIN® XZU®2 tires.

(2) "No bus shall be operated with regrooved, recapped or retreaded tires on the front wheels." US Code of Federal Regulations: Title 49, Transportation; Part 393.75.

(3) When compared to MICHELIN® XZU®2 (12R22.5) tire vs MICHELIN® X® INCITY Z tires (305/70R22.5) in direct comparison fleet testing.

(4) Meets the USTMA (U.S. Tire Manufacturers Association) snow traction performance requirements. Meets the Tire and Rubber Association of Canada (TRAC) requirements for severe snow traction.

X® INCITY Z SL

An all-position tire designed for the challenges of urban transit operations.⁽¹⁾ This is a Single Life tire that offers optimized mileage and durability.

- Durable and Dependable – Designed to withstand tough conditions with extra thick sidewalls that helps to protect against shocks.
- Optimized Tread Life – Longer tread life with scrub resistant compound which helps to fight irregular treadwear in urban bus conditions.⁽²⁾
- Driver Confidence – Outstanding traction with Matrix™ Siping which provides inter-locking action which offers excellent traction and even wear.
- Outstanding Fuel Efficiency – Low rolling resistance without compromising tread life. Compounds and tread pattern combine to deliver outstanding fuel efficiency and mileage for urban applications.

Sizes	Load Range	Tread Depth	MSPN
305/85R22.5	J	24	62156

URBAN



LINE HAUL REGIONAL URBAN ON/OFF ROAD

(1) "No bus shall be operated with regrooved, recapped or retreaded tires on the front wheels." US Code of Federal Regulations: Title 49, Transportation; Part 393.75.

(2) Urban Transit buses fitted with 12R22.5 or 305/85R22.5 dimensions should only use the MICHELIN® X® INCITY Z or X® INCITY Z SL tires.

Exceeding the legal speed limit is neither recommended nor endorsed.

Recommended

Acceptable

STEER / ALL-POSITION TIRES

AGILIS® CROSSCLIMATE®

Our Most Durable Heavy Duty Light Commercial Truck Tire – An all-season Light Truck tire that offers exceptional durability, mileage, and wet braking for high stress commercial applications.

- CurbGard™ Sidewall Protectors – Resist curb scrubbing in urban environments.
- Excellent Tread Life Under Heavy Loads – MaxPressure Profile™ optimizes the tire footprint for better wear life under high pressure, heavy loads, high torque, and stop and go driving.
- StabiliBlok™ Design – Provides wider and longer tread blocks, to resist extreme torque while providing cool operating temperatures under full load at high speed.
- SipeLock™ Technology – Provides hundreds of biting edges for improved wet and snow traction without sacrificing tread block stability.

Size Load/Speed Rating	Load Range	Tread Depth	MSPN
185/60R15C 94T ^(1,3)	C	11.5	02998
205/65R15C 102/100T ^(1,3)	C	11.5	04143
195/75R16C 107/105R ^(1,3)	D	11.5	56761
225/75R16C 121/120R ^(1,3)	E	11.5	70411
235/65R16C 121/119R ^(1,3)	E	11.5	09118
LT215/85R16 115/112R ⁽²⁾	E	12.5	80033
LT225/75R16 115/112R ⁽²⁾	E	12.5	72022
LT235/85R16 120/116R ⁽²⁾	E	12.5	65681
LT245/75R16 120/116R ⁽²⁾	E	12.5	52347
LT265/75R16 123/120R ⁽²⁾	E	12.5	10257
LT235/80R17 120/117R ⁽²⁾	E	12.5	09723
LT245/70R17 119/116R ⁽²⁾	E	12.5	42604
LT245/75R17 121/118R ⁽²⁾	E	12.5	09917
LT265/70R17 121/118R ⁽²⁾	E	12.5	36185
LT285/70R17 121/118R ⁽²⁾	E	12.5	83162
LT265/70R18 124/121R ⁽²⁾	E	12.5	05791
LT275/65R18 123/120R ⁽²⁾	E	12.5	57222
LT275/70R18 125/122R ⁽²⁾	E	12.5	76555
LT265/60R20 121/118R ⁽²⁾	E	12.5	50977
LT275/65R20 126/123R ⁽²⁾	E	12.5	15627
LT285/60R20 125/122R ⁽²⁾	E	12.5	19604

URBAN



LINE HAUL REGIONAL **URBAN** ON/OFF ROAD



- (1, 2) Tread Design as indicated on the tire pictures.
 (3) Directional tread design.
 (4) Meets the USTMA (U.S. Tire Manufacturers Association) snow traction performance requirements. Meets the Tire and Rubber Association of Canada (TRAC) requirements for severe snow traction.

XZY® 3 WIDE BASE

Exceptional all-position wide base radial designed for heavy front axle mixed service in on/off road applications.

- Improved traction in soft soil and mud promoted by aggressive new tread design.
- Improved floatation offered by wider tread (almost 1 inch wider than MICHELIN® XZY® Wide Base).
- Great resistance to shocks, bruising and penetrations fostered by new four-belt design, featuring full-width elastic protector ply.
- Added sidewall and shoulder protection from thicker rubber and new aggressive shoulder design.
- Improved wet traction throughout the tread life cultivated by deep, wide circumferential grooves and minimized bridging between tread elements.

ON/OFF ROAD



LINE HAUL REGIONAL **URBAN** **ON/OFF ROAD**

Sizes	Load Range	Tread Depth	MSPN
385/65R22.5	J	22	53779
425/65R22.5	L	23	40321
445/65R22.5	L	23	83691

STEER / ALL-POSITION TIRES

X ONE® XZY® 3

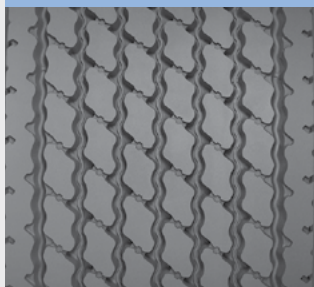
All-position wide base single designed for significant weight and fuel savings⁽¹⁾ in on/off road applications.

- Long tread life and outstanding chip and cut resistance in on/off road service with 23/32nds original tread depth of application-specific compound.
- Flat, stable contact area for long, even wear provided by Michelin's Infini-Coil™, featuring a 1/4 mile of steel cable to help eliminate casing growth.
- Enhanced protection against stone drilling from variable pitch groove walls and groove bottom protectors in center grooves.
- Great bead durability and resistance to heat from reinforced bead package featuring a wide metallic chafer.

Sizes	Load Range	Tread Depth	MSPN
455/55R22.5	M	23	11629

(1) Based on industry standard rolling resistance testing of comparable tires and retreads. Actual results may vary, and may be impacted by many factors, to include road conditions, weather and environment, driver performance, etc.

ON/OFF ROAD



LINE HAUL REGIONAL URBAN ON/OFF ROAD

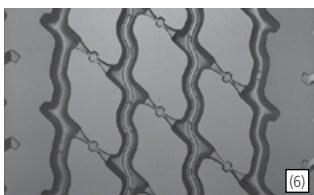
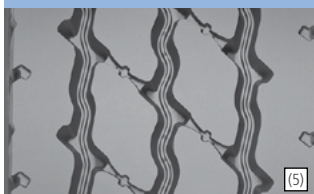
X® WORKS Z

Our toughest all-position, on/off-road tire just got tougher.⁽¹⁾ With a 50% wider protector ply vs. leading competitive tires⁽²⁾ and 5% more removal miles vs. the MICHELIN® XZY® 3 tire it replaces, this tire provides unsurpassed durability against road hazards—guaranteed.

- Tougher casing durability to help increase uptime and capping due to a 50% wider groove-to-groove protector ply and a thicker layer of shock absorbing cushion gum.⁽²⁾
- 5% more removal mileage is delivered through a tough chip and cut resistant compound that fights tread abrasion and a wide footprint that promotes even wear.⁽³⁾
- Dual layered defense against stone retention and stone-drilling, with V-channels and groove bottom protectors.
- Strong, thick sidewall features a double treatment of TW6 OzoneShield™ Technology for increased protection against ozone cracking and weathering.
- Backed by Michelin's six-month worry-free road hazard guarantee.⁽⁴⁾

Sizes	Load Range	Tread Depth	MSPN
11R22.5⁽⁵⁾	H	24	15701
12R22.5⁽⁵⁾	H	24	11073
315/80R22.5⁽⁶⁾	L	23	64204
11R24.5⁽⁵⁾	H	24	78261

ON/OFF ROAD



LINE HAUL REGIONAL URBAN ON/OFF ROAD



(1) Results based on three small-scale internal field tests using customer fleet vehicles vs. MICHELIN® XZY® 3 in size 11R24.5 LRH. Actual results may vary.

(2) Protector ply width & cushion gum thickness compared to Bridgestone M843 & M853, and Goodyear® G751™ MSA Duraseal in size 11R22.5 LRH.

(3) Results based on three small-scale internal field tests using customer fleet vehicles vs. MICHELIN® XZY® 3 in size 11R24.5 LRH. Actual results may vary.

(4) 6-Month Worry-Free Road Hazard Guarantee: Contact your local Michelin representative for details.

(5, 6) Tread Design as indicated on the tire pictures.

STEER / ALL-POSITION TIRES

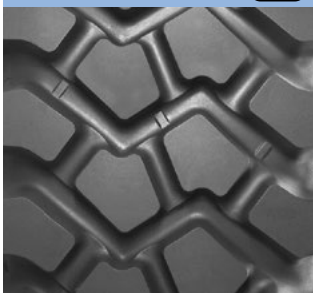
XZL™

All-terrain, all-position radial for special service such as Emergency Response Vehicles and Tactical Wheeled vehicles.

- Self-cleaning, open shoulder tread design features offset elements to help enhance traction and floatation capabilities on varied terrains including snow, sand, mud and highway.
- All-terrain, non-directional tread design for added versatility.
- Full-width steel belts and elastic protector ply help provide extra casing protection against most off-road hazards.
- Tubeless construction compatible with Central Tire Inflation systems and bead locks.

Sizes	Load Range	Tread Depth	MSPN
365/85R20	J	28	56389
395/85R20	J	33	54331
24R21	H	31	76025

OFF ROAD



OFF ROAD

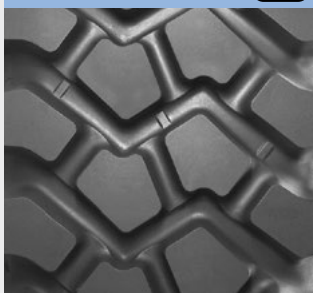
XZL+™

All-terrain, all-position radial for special service in extremely demanding applications.

- Traction and flotation on varied terrains such as snow, sand and mud is delivered using an open shoulder tread design, with self-cleaning elements.
- Casing protection against most off-road hazards comes from using full-width steel belts and elastic protector ply.
- Compatible with Central Tire Inflation systems and bead locks due to tubeless construction.

Sizes	Load Range	Tread Depth	MSPN
395/85R20 ^(1,2)	J	26	94675

OFF ROAD



OFF ROAD

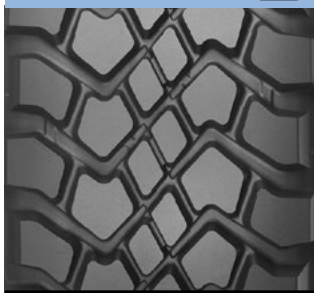
XZL™ WIDE BASE

All-position wide base radial designed for optimized traction in on/off road applications.

- Self-cleaning, open-shoulder tread design features offset elements to help enhance traction and floatation capabilities.
- Stable block design helps ensure a consistent footprint, even in free-rolling positions, to help deliver smooth, even wear and a quiet ride.
- Deep, application-specific compounds help provide resistance to aggressions and abrasion common in off-road service.
- Full-width steel belts and elastic protector ply help protect the casing against shocks, bruising and penetrations.
- Conventional 22.5" commercial sizes.

Sizes	Load Range	Tread Depth	MSPN
445/65R22.5	L	27	84103

OFF ROAD



OFF ROAD

DRIVE TIRES

X ONE® LINE ENERGY D

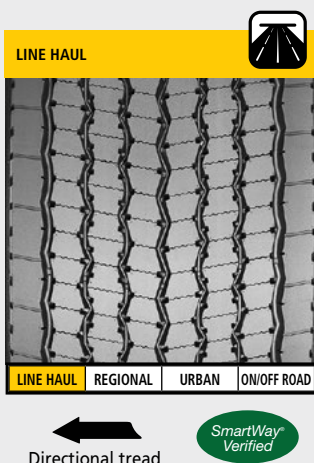
Leading SmartWay® fuel economy⁽¹⁾ and improved mileage in a next generation wide base single drive tire for line haul applications.

- No compromise SmartWay® fuel economy from Dual Energy Compound Tread, delivering a top Fuel and Mileage layer, over a cool running Fuel and Durability layer for reduced rolling resistance and extended casing life.
- 15% longer tread life than MICHELIN® X ONE® XDA® Energy from the Dual Energy Compound Tread, wide footprint and solid shoulder for force distribution, and Infini-Coil™ which wraps 1/4 mile of steel cable around the casing to eliminate casing growth and insure a consistent footprint.
- Driver confidence delivered through the outstanding traction and even wear of Matrix™ Siping's full depth, interlocking sipes with zig-zag walls – providing thousands of biting edges for traction.
- Casing life is extended through use of the Dual Energy Compound Tread for a cooler running tire, a full-width elastic protector ply, and rectangular bead bundle.

Sizes	Load Range	Tread Depth	MSPN
445/50R22.5	L	24	24306

(1) Based on industry standard rolling resistance testing of comparable tires and retreads. Actual results may vary, and may be impacted by many factors, to include road conditions, weather and environment, driver performance, etc.

(2) Compared to the 445/50R22.5 MICHELIN® X ONE® XDA® ENERGY tire using internal testing.

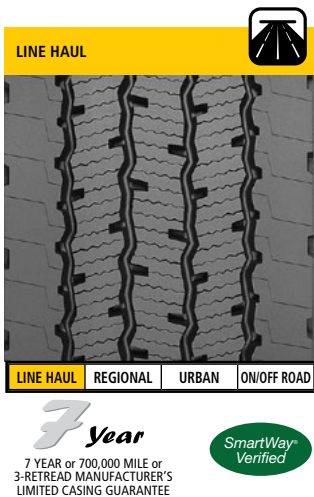


X® LINE ENERGY D

SmartWay® verified fuel economy with leading tread life and traction in an energy drive tire for line haul applications.

- SmartWay® verified fuel efficiency due to reduced rolling resistance from the Dual Energy Compound tread.
- Extended mileage from the wear resistance of the wider footprint, Matrix™ siping, and Dual Energy Compound tread.
- Driver confidence from the excellent traction and stability provided by Matrix™ Siping.
- Warrantied retreadability provided by an enhanced inner liner and strengthened bead area for reduced casing fatigue and maximum retreadability.
- 7/7/3 manufacturer's limited casing warranty.⁽³⁾

Sizes	Load Range	Tread Depth	MSPN
11R22.5	G	23	35887
275/80R22.5	G	23	36859
275/80R24.5	G	23	36992



(1) Based on industry standard rolling resistance testing of comparable tires and retreads. Actual results may vary, and may be impacted by many factors, to include road conditions, weather and environment, driver performance, etc.

(2) Compared to MICHELIN® XDA® ENERGY tire.

(3) 7/7/3 Manufacturer's Limited Casing Warranty: 7 Year or 700,000 Mile or 3-Retread Limited Warranty for MICHELIN® X® LINE ENERGY D tire when retreaded by an authorized Michelin Retread Technologies (MRT) Dealer only. See limited warranty for details.

DRIVE TIRES

XDA® ENERGY+

Michelin's most fuel-efficient, line haul, dual drive tire.⁽¹⁾ Saves your fleet \$400 annually per truck in fuel by replacing the Bridgestone M710 Ecopia™ tire with the MICHELIN® XDA® ENERGY + tire, when you pay \$2.53 per gallon.⁽²⁾

- Fuel Savings Limited Guarantee⁽³⁾ – Innovative guarantee brings peace of mind.
- Fuel Efficiency – Helps Lower Fuel Consumption to Reduce Operating Costs. Innovative FuelSaver™ tread compound helps 7% better rolling resistance vs. a leading competitive line haul dual drive tire⁽⁴⁾ brings new levels of fuel efficiency and saving.
- Mileage – Long Even Wear Helps Reduce Maintenance Costs. Tread design optimized to help provide this long even wear.
- Retreadability – MICHELIN® durable casings designed to provide multiple retreads to help reduce maintenance costs. 7 YEAR / 700,000-MILE / 3-RETREAD Manufacturer's Limited Casing Guarantee to Maximize Your Assets.

Sizes	Load Range	Tread Depth	MSPN
275/80R22.5	G	23	08024

- (1) Based on industry standard rolling resistance testing of comparable tires or retreads. Actual results may vary, and may be impacted by many factors, to include road conditions, weather and environment, driver performance, etc.
- (2) Fuel savings calculated based on replacing the Bridgestone M710 Ecopia™ with the MICHELIN® XDA® Energy+ in (8) drive tire positions on a class 8 tandem-drive axle truck. Calculations also based on the U.S. National average diesel fuel price as of July 31, 2017 for a class 8 tandem-drive axle truck and single tandem axle trailer combination traveling 120,000 miles/year. Actual results may vary, and may be impacted by many factors, to include road conditions, weather, environment, combination of steer and trailer tires used, driving habits, tire size, equipment and maintenance.
- (3) See your Michelin Representative or michelintruck.com/reference-materials/manuals-bulletins-and-warranties/ for details.
- (4) Vs. BRIDGESTONE M710 Ecopia™ based on internal rolling resistance tests using ISO 28580 in tire size equivalent 275/80R22.5.



7 YEAR or 700,000 MILE or 3-RETREAD MANUFACTURER'S LIMITED CASING GUARANTEE

XDN®2

All weather premium drive tire optimized for exceptional traction and mileage in line haul and regional applications.

- Michelin's Matrix™ siping technology helps provide exceptional traction on dry and slippery surfaces. Over 1,300 biting edges combine to help provide excellent levels of traction while the 3 dimensional Matrix™ sipes lock together for the stability normally associated with solid tread blocks.
- Extra-wide tread (nearly 1" wider than MICHELIN® XDN® tire) helps provide stability while helping to improve handling and mileage.
- Full 27/32nds tread depth helps provide long original tread life.
- Wide, open shoulder grooves help deliver additional traction balanced with tread life.

Sizes	Load Range	Tread Depth	MSPN
11R22.5	G	27	72805
11R22.5	H	27	64321
12R22.5	H	27	51753
275/80R22.5	G	27	63465
11R24.5	H	27	87129
275/80R24.5	G	27	75684



DRIVE TIRES

X ONE® LINE GRIP D

MICHELIN's next generation X One drive tire for long haul and regional applications with grip that weathers the elements. Over 25% better snow traction than leading competitive tires.⁽¹⁾

- Snow Traction – Over 25% better snow traction than leading competitor tires.⁽¹⁾
- 3 Peak Mountain Snow Flake Certification – Traction verified in an Arctic test facility.⁽²⁾
- Open Shoulder – Designed for additional grip in adverse weather and snow conditions.
- Maximize Tread Life – Top layer of dual compound tread provides long tread life.
- Excellent Retreadability – Bottom layer of dual compound tread provides cooler running rubber for long casing life.
- Weight Savings – 389 lbs more payload than dual tires.⁽³⁾
- Fuel Savings – Save your fleet \$550 per truck annually in fuel by replacing the MICHELIN® X ONE® XDN®2 with the MICHELIN® X ONE® LINE GRIP D tire, when you pay \$2.99 per gallon.⁽⁴⁾
- 8% Better Rolling Resistance than the MICHELIN® X ONE® XDN®2 tire.⁽⁵⁾

Sizes	Load Range	Tread Depth	MSPN
445/50R22.5	L	27	55210
455/55R22.5	L	27	41721

SmartWay®
Verified



- (1) In a standardized snow test, the 445/50R22.5 MICHELIN® X ONE® LINE GRIP D tire traveled 54% faster than the 445/50R22.5 Bridgestone® Greatec™ M835™ Ecopia™ tire and 28% faster than the 445/50R22.5 Goodyear® G392A SSD™ DuraSeal + Fuel Max™ tire. Actual on-road results may vary.
- (2) Meets the USTMA (U.S. Tire Manufacturers Association) snow traction performance requirements. Meets the Tire and Rubber Association of Canada (TRAC) requirements for severe snow traction.
- (3) Based on replacing eight MICHELIN® XDN®2 dual tires with Alcoa® Ultra ONE® wheels with four MICHELIN® X ONE® LINE GRIP D tires with Alcoa® Ultra ONE® Wheels.
- (4) Fuel savings calculated based on replacing the MICHELIN® X ONE® XDN®2 tire with the MICHELIN® X ONE® LINE GRIP D tire in four drive positions on a class 8 tandem-drive axle truck and single tandem axle trailer combination traveling 100,000 miles / year. Calculations also based on the US National average diesel fuel price as of January 16, 2018. Actual results may vary, and may be impacted by many factors, to include road conditions, weather, environment, combination of steer and trailer tires used, driving habits, tire size, equipment, and maintenance.
- (5) Based on 3rd party rolling resistance tests using ISO 282580 comparing the MICHELIN® X ONE® LINE GRIP D and MICHELIN® X ONE® XDN®2 tire in the 445/50R22.5 dimension. Actual results may vary.

XDN®2 GRIP

All weather, directional, premium drive tire optimized for exceptional traction and mileage in line haul and regional applications.

- Michelin's Matrix™ siping technology helps provide exceptional traction on dry and slippery surfaces. Over 1,300 biting edges combine to help provide excellent levels of traction while the 3 dimensional Matrix™ sipes lock together for the stability normally associated with solid tread blocks.
- Extra-wide tread (nearly 1" wider than MICHELIN® XDN® tire) helps provide stability while helping to improve handling and mileage.
- Full 28/32nds tread depth helps provide long original tread life.
- Wide, open shoulder grooves help deliver additional traction balanced with tread life.

Sizes	Load Range	Tread Depth	MSPN
315/80R22.5 ⁽¹⁾	L	28	04355

(1) Not approved for use with 8.25 wheel.

(2) Meets the USTMA (U.S. Tire Manufacturers Association) snow traction performance requirements. Meets the Tire and Rubber Association of Canada (TRAC) requirements for severe snow traction.

LINE HAUL



LINE HAUL REGIONAL URBAN ON/OFF ROAD

Directional tread



DRIVE TIRES

XDA®5+

Longest wearing drive tire featuring regenerating tread features that deliver excellent traction late in life for line haul applications.

- Improved fuel efficiency, with a 5% rolling resistance improvement over MICHELIN® XDA®5 tire, provided by the Advanced Technology compound.
- Leading tread life, and smooth wear – solid shoulders.
- Excellent mileage and stability – wide footprint, square shoulders.
- Exceptional handling, traction, and stability – Matrix™ Siping Technology.
- Late life traction – regenerating tread features.
- Extended casing life and retreadability – full-width elastic protector ply.
- Reduced heat and fatigue – rectangular bead bundle, a Michelin exclusive.

Sizes	Load Range	Tread Depth	MSPN
11R22.5	G	30	14003
275/80R22.5	G	30	61310
11R24.5	H	30	97973
275/80R24.5	G	30	01376

LINE HAUL



LINE HAUL REGIONAL URBAN ON/OFF ROAD

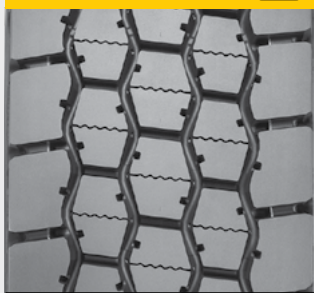
X® MULTI D

The next-generation regional drive tire offering first-class tire mileage and excellent scrub resistance with no compromises to traction.

- First-class mileage and scrub resistance due to the use of co-extruded compounds that optimize performance.
- More Grip, Less Slip is provided by the full depth Matrix™ siping combined with the regenerating tread feature. Zero to On The Road 80% faster than a leading competitor.⁽¹⁾
- Excellent traction due to the pass-through open shoulder, Matrix™ siping and the regenerating tread feature.
- Casing durability is delivered through the use of TW6 OzoneShield™ technology, cooler running rubber from the co-extrusion process, and a full width protector ply.

Sizes	Load Range	Tread Depth	MSPN
10R22.5	G	22	74441
11R22.5	G	28	33502
11R22.5	H	28	80276
255/70R22.5	H	24	76760
275/70R22.5	G	27	76710
11R24.5	H	28	27287

REGIONAL



LINE HAUL REGIONAL URBAN ON/OFF ROAD



(2)



(3)

(1) In a standardized snow test, the 11R22.5 MICHELIN® X® MULTI D tire traveled 80% further from start versus the 11R22.5 Bridgestone® M726 ELA tire. Actual results may vary.

(2) Confidence Guarantee – See MichelinTruck.com > Reference Materials > Warranties/Guarantees for details.

(3) High torque approved.

DRIVE TIRES

X[®] MULTI D 19.5

The MICHELIN[®] X[®] MULTI D is an open shoulder drive axle radial tire designed for regional applications.

- 12% More Surface Contact Area⁽¹⁾ – Contributes to tread stability and efficient miles/32nds.
- Advanced Technology Compound – Results in 13% lower rolling resistance for improved fuel efficiency.⁽²⁾
- Aggressive Tread Design with Semi-Open Shoulder – Provides exceptional traction and driver confidence.
- Robust 4 Belt Package – Provides stable footprint and overall durability.

Sizes	Load Range	Tread Depth	MSPN
265/70R19.5	G	16	92982
285/70R19.5	H	17	09733

- (1) The 265/70R19.5 MICHELIN[®] X[®] MULTI D tread width is 0.4" greater than its predecessor the MICHELIN[®] XDE[®]2+ tire. When combined with the change in tread design the result is a 12% increase in rubber contact area with the road surface for a more sturdy footprint.
- (2) Versus MICHELIN[®] XDE[®]2+ tire.
- (3) Meets the USTMA (U.S. Tire Manufacturers Association) snow traction performance requirements. Meets the Tire and Rubber Association of Canada (TRAC) requirements for severe snow traction.



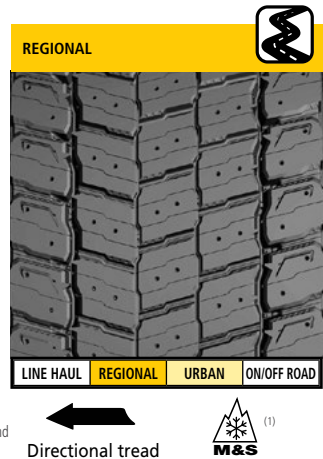
X[®] MULTI D 295

The versatile, all-season drive tire for regional and line haul operations.

- Better Tread Life – 20% better tread life than the MICHELIN[®] X[®] MULTIWAY XD tire.
- Optimized Tread Design – Regenerating tread design provides traction throughout life.
- Improved Rolling Resistance – 26% improvement in rolling resistance compared to the MICHELIN[®] X[®] MULTIWAY XD tire.
- Infini-Coil[™] Belt Technology strengthens the crown against shocks and impacts with over a ¼ mile of steel cables.

Sizes	Load Range	Tread Depth	MSPN
295/60R22.5	J	21	20735

- (1) Meets the USTMA (U.S. Tire Manufacturers Association) snow traction performance requirements. Meets the Tire and Rubber Association of Canada (TRAC) requirements for severe snow traction.



DRIVE TIRES

X® MULTI ENERGY D

Leading edge, ultra fuel-efficient⁽¹⁾ SmartWay® verified drive tire designed for optimized traction and treadlife in regional and super regional applications.

- Exceptional fuel-efficiency and tread/casing life due to the Dual Energy Compound Tread, which provides low rolling resistance, anti-scrub properties, and minimizes internal casing temperatures.
- Outstanding traction and even wear are conveyed by the inter-locking action of full depth Matrix™ siping.
- Long tread life and stability are enabled by a wide, optimized footprint, which eliminates the need for additional tread depth.
- Additional traction is provided in adverse weather conditions due to shoulder siping.

Sizes	Load Range	Tread Depth	MSPN
11R22.5	G	24	58300
275/80R22.5	G	24	63049
11R24.5	H	24	61739

REGIONAL



SmartWay®
Verified



LINE HAUL REGIONAL URBAN ON/OFF ROAD

(1) Based on industry standard rolling resistance testing of comparable tires and retreads. Actual results may vary, and may be impacted by many factors, to include road conditions, weather and environment, driver performance, etc.

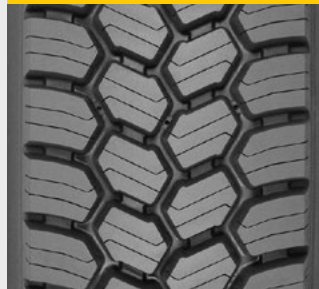
XDS®

The drive axle radial for year-round traction and optimized for severe winter conditions in regional and on/off road applications.

- Rugged directional tread design helps boost snow and ice traction and helps reduce heel/toe wear typically associated with open shoulder designs.
- Full-width zigzag sipes interlock to enhance block stability under torque while helping to provide extra bite, especially in deep snow.
- Deep V-shaped lateral shoulder grooves help to maximize mud and snow evacuation.
- Extra-robust four-belt crown package with extra-wide working plies help deliver exceptional casing life.
- Full-width elastic protector ply and extra-thick rubber under the tread help protect the working plies from shocks, bruises and impacts.

Sizes	Load Range	Tread Depth	MSPN
12R22.5	H	26	62208

REGIONAL



LINE HAUL REGIONAL URBAN ON/OFF ROAD

Directional tread

XDS®2 19.5

Drive axle radial for year round traction, optimized for winter conditions and limited all-position service in regional and on/off road applications.

- Outstanding traction on wet and slippery surfaces from over 700 3D Matrix™ sipes.
- Optimized for stone rejection with variable angled groove walls and groove bottom protectors.
- Traction in demanding surface conditions from open shoulder design.
- Protection from impacts through robust curb guard features and sidewall scallops.
- Self-cleaning tread pattern through zig-zag groove angles and wide, open shoulder grooves.

Sizes	Load Range	Tread Depth	MSPN
225/70R19.5	G	18	24975
245/70R19.5	H	19	23134

REGIONAL



LINE HAUL REGIONAL URBAN ON/OFF ROAD



Meets the USTMA (U.S. Tire Manufacturers Association) snow traction performance requirements. Meets the Tire and Rubber Association of Canada (TRAC) requirements for severe snow traction.

DRIVE TIRES

XDS®2 STANDARD SIZES

Second generation of Michelin's best drive axle radial for deep snow and mud traction.

- Rugged directional tread design helps boost snow and ice traction and helps reduce heel/toe wear typically associated with open shoulder designs.
- Michelin Durable Technology's Matrix™ 3-Dimensional siping for enhanced stability and exceptional traction in both dry and slippery conditions.
- Extra robust four-belt crown package with extra wide working plies help deliver exceptional casing life.
- Full-width elastic protector ply and extra thick rubber under the tread help protect the working plies from shocks, bruises and impacts.
- SipeSaver teardrop at the base of the sipes relieves stresses and helps prevent tearing.

Sizes	Load Range	Tread Depth	MSPN
11R22.5	H	26	05359
11R24.5	H	26	06613

REGIONAL



LINE HAUL REGIONAL URBAN ON/OFF ROAD



Directional tread

XPS TRACTION®

All-steel, drive axle light truck tire designed to deliver excellent on/off road traction and retreadability for commercial/fleet operations.

- Aggressive tread designed to deliver good on/off road traction through mud, snow and rough terrain.
- Anti-chip compound in tread area helps resist cuts for enhanced durability.
- Sidewall protector helps provide resistance to sidewall damage from most curb scrubbing.
- Steel casing and reinforced steel bead offer exceptional retreadability.
- Third steel belt helps provide puncture resistance for enhanced durability.

Sizes	Load Range	Tread Depth	MSPN
LT215/85R16	E	17	35260

REGIONAL



LINE HAUL REGIONAL URBAN ON/OFF ROAD

X® INCITY GRIP D SL

All weather premium drive tire optimized for exceptional traction in Urban Transit applications.⁽¹⁾ This is a Single Life tire that offers optimized mileage and durability.

- Optimized Tread Life – Longer tread life with scrub resistant compound which helps to fight irregular treadwear in urban bus conditions.⁽²⁾
- Driver Confidence – Outstanding traction with Matrix™ Siping which provides inter-locking action which offers excellent traction and even wear.
- Durable and Dependable – Designed to withstand tough conditions.

Sizes	Load Range	Tread Depth	MSPN
305/85R22.5	J	27	08623

URBAN



LINE HAUL REGIONAL URBAN ON/OFF ROAD

(1) "No bus shall be operated with regrooved, recapped or retreaded tires on the front wheels." US Code of Federal Regulations: Title 49, Transportation; Part 393.75.

(2) Urban Transit buses fitted with 12R22.5 or 305/85R22.5 dimensions should only use the MICHELIN® X® INCITY Z, X® INCITY Z SL or X® INCITY GRIP D SL tires.

DRIVE TIRES

X® WORKS GRIP D

Our most aggressive drive axle tire is made specifically for energy and logging fleets operating in extreme conditions. Designed with safety in mind, using real feedback from real drivers, the MICHELIN® X® Works Grip D has exceptional traction to help keep you on the road.

- Stability in all conditions – Extra wide tread for stable footprint.
- Optimized rubber to void ratio for maximum traction without sacrificing mileage.
- Shock, impact and road hazard protection – 4 steel belts in the summit package for enhanced durability.
- Maximum sidewall protection – Extra thick sidewalls for severe service protection against aggression, chipping and scaling.
- Efficient snow chain mount and dismount – Optimized housing design allows quick and efficient installation and removal of snow chains.
- Staggered shoulder blocks to help lateral grip for slippery conditions.
- Saw-tooth lugs with 800+ serrated edges that add grip for slippery surfaces.
- Continuous stone ejectors around the center block fight stone retention and drilling to protect the casing.
- Co-Ex technology for cool running tread rubber reducing temperatures in crown area and preserving the casing.

Sizes	Load Range	Tread Depth	MSPN
11R24.5	H	32	51503

ON/OFF ROAD



LINE HAUL REGIONAL URBAN ON/OFF ROAD

X® WORKS XDY®

Next generation on/off road drive tire optimized for exceptional traction and wear in mixed and severe service for on/off road applications.

- Get a 10% increase in removal mileage due to a new wider tread design (when compared to the MICHELIN® XDY®3 tire).
- Improved traction with more efficient mud evacuation from a new directional tread design (when compared to the MICHELIN® XDY®3 tire).
- Maximum mileage and casing life with Co-Ex Technology.
- Excellent retreadability with a robust four steel belt construction.
- Maximum sidewall protection provided by an extra-thick sidewall.

Sizes	Load Range	Tread Depth	MSPN
11R22.5	H	30	89725
315/80R22.5 ⁽¹⁾	L	28	55576
11R24.5	H	30	90022

(1) Not approved for use with 8.25 wheel.

ON/OFF ROAD



LINE HAUL REGIONAL URBAN ON/OFF ROAD

Directional tread

XDY-EX2™

Our most aggressive drive axle tire designed for commercial vehicles operating in extreme conditions where maximum traction is the priority in on/off road applications.

- Maximize your uptime with improved off-road and mud traction (when compared to the MICHELIN® XDY-EX™).
- Maximum mileage and casing life with Co-Ex Technology.
- Excellent retreadability with a robust four steel belt construction.
- Maximum sidewall protection provided by an extra-thick sidewall.

Sizes	Load Range	Tread Depth	MSPN
11R24.5	H	32	23274

ON/OFF ROAD



LINE HAUL REGIONAL URBAN ON/OFF ROAD

Exceeding the legal speed limit is neither recommended nor endorsed.

Recommended Acceptable

TRAILER TIRES

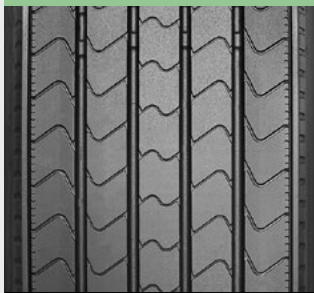
X® LINE ENERGY T

SmartWay® fuel efficiency⁽¹⁾ with excellent mileage and casing durability in a trailer tire designed specifically for line haul applications.

- 10% improved rolling resistance vs. MICHELIN® XT-1® tires due to next generation Advanced Technology Compound.
- Excellent tread life from a solid tread sculpture with an optimized contact patch for outstanding wear resistance, alongside a shoulder groove that resists irregular wear.
- Exceptional handling from 4 circumferential grooves that deliver excellent water evacuation.
- Extended casing life thanks to a curb guard that protects the shoulder and sidewall, and a rectangular bead bundle that reduces heat and fatigue in the casing.

Sizes	Load Range	Tread Depth	MSPN
11R22.5	G	12	92005
275/80R22.5	G	12	92052
11R24.5	H	12	92448
275/80R24.5	G	12	92981

LINE HAUL



LINE HAUL REGIONAL URBAN ON/OFF ROAD

SmartWay®
Verified

(1) Based on industry standard rolling resistance testing of comparable tires and retreads. Actual results may vary, and may be impacted by many factors, to include road conditions, weather and environment, driver performance, etc.

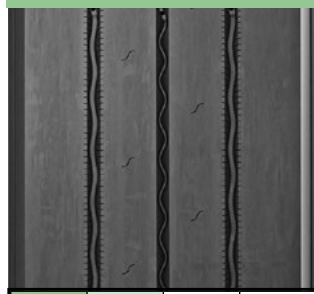
X® LINE ENERGY T 19.5

Fuel-efficient⁽¹⁾, long wearing, small diameter trailer tire designed for high cube service in line haul applications.

- Reduced rolling resistance of 14%⁽²⁾ due to specially engineered rubber compounds.
- Up to 14% longer tread life⁽²⁾ from a wider tread that distributes force, massive shoulders for scuff resistance, and micro sipes that help prevent abnormal wear.
- Driving confidence, especially in wet conditions, delivered by the efficient water evacuation of see-through circumferential grooves and blind sipes.
- Casing life is extended through the heat reducing impact of the rectangular bead bundle and an extended metallic chafer ply that protects against mounting damage and brake heat.

Sizes	Load Range	Tread Depth	MSPN
265/70R19.5	H	13	40936

LINE HAUL



LINE HAUL REGIONAL URBAN ON/OFF ROAD

(1) Based on industry standard rolling resistance testing of comparable trailer tires. Actual results may vary, and may be impacted by many factors, to include road conditions, weather and environment, driver performance, etc.

(2) Vs. MICHELIN® XTA®2 ENERGY tire.

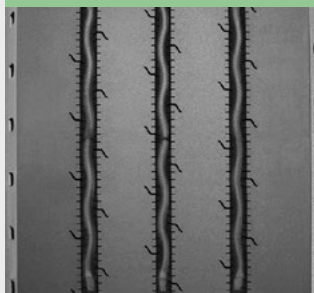
XTA®2 ENERGY

Fuel-efficient⁽¹⁾, small diameter trailer tire that helps deliver long, even tread wear in high cube line haul applications.

- Improved retreadability from a stronger, more durable crown package (compared to the MICHELIN® ENERGY XTA®).
- Advanced technology compounds formulated to help provide low rolling resistance and cool operating temperatures.
- See-through circumferential grooves promote efficient water evacuation for good wet braking and traction throughout the life of the tire.

Sizes	Load Range	Tread Depth	MSPN
245/70R17.5	J	13	78370

LINE HAUL



LINE HAUL REGIONAL URBAN ON/OFF ROAD

(1) Based on industry standard rolling resistance testing of comparable tires and retreads. Actual results may vary, and may be impacted by many factors, to include road conditions, weather and environment, driver performance, etc.

Exceeding the legal speed limit is neither recommended nor endorsed.

Recommended

Acceptable

TRAILER TIRES

X ONE® LINE ENERGY T

Breakthrough Advanced Casing Technology delivers significant reduction in irregular wear⁽¹⁾ and outstanding fuel economy⁽²⁾ to Michelin's latest wide base single tire for line haul trailers.

- 15% improvement in removal mileage from current pull point vs. MICHELIN® X ONE® XTA® tires, using Michelin's new Advanced Casing Technology. Advanced Casing Technology delivers significant reduction in irregular wear.
- Irregular wear is also reduced using microspikes and a solid shoulder, along with a wide Infini-Coil™.
- Improved fuel economy vs. MICHELIN® X ONE® XTA® tires is delivered using Advanced Technology compounds for low rolling resistance.
- Outstanding handling comes from an optimized architecture that features wide grooves to promote water evacuation.
- Extended casing life comes from using waved groove bottoms to resist stone drilling, a full-width elastic protector ply to prevent punctures, and a rectangular bead bundle to reduced heat and fatigue.

Sizes	Load Range	Tread Depth	MSPN
445/50R22.5	L	13	84085

(1) Based on current pull point vs MICHELIN® X ONE® XTA® tire in field testing and observation.

(2) Based on industry standard rolling resistance testing of comparable tires or retreads. Actual results may vary, and may be impacted by many factors, to include road conditions, weather and environment, driver performance, etc.

LINE HAUL



LINE HAUL REGIONAL URBAN ON/OFF ROAD

SmartWay®
Verified

X® MULTI T 17.5

Robust small diameter tire designed to withstand the demands of high scrub and spread axle service on low platform and specialty trailers in various regional applications. Replacing the MICHELIN® XTE® 2 235/75R17.5 size.

- Enhanced Mileage – Dual compound tread rubber helps ensure cool operating temperatures, while abrasion-resistant rubber compound helps keep tire wear rate low.
- Excellent Wet Traction – Deep, wide channels help provide excellent water evacuation throughout the life of the tire.
- Durable Casing – Robust crown design with 4-steel belt package.

Sizes	Load Range	Tread Depth	MSPN
245/70R17.5	H	15	18537

REGIONAL



LINE HAUL REGIONAL URBAN ON/OFF ROAD

X® MULTI T2

Improved mileage and exceptional durability, this regional and urban trailer tire is primarily used on steerable lift axles on heavy box and flat-bed trailers.

- Up to 20% More Mileage⁽¹⁾ – Innovative evolving groove design which promotes uniform wear and resists stone retention.
- Increased Traction and Stability⁽²⁾ – Beefy solid shoulders and increased rubber volume help resist the abrasion of lateral scrub.
- Longer Life and Retreadability – Robust crown design with 4-steel belt package.

Sizes	Load Range	Tread Depth	MSPN
385/55R22.5	L	19	28644

REGIONAL



LINE HAUL REGIONAL URBAN ON/OFF ROAD

(1) +20% mileage vs MICHELIN® X® MULTI T tire.

(2) 8% larger total contact area than the MICHELIN® X® MULTI T tire.

TRAILER TIRES

X ONE® MULTI ENERGY T

Breakthrough Advanced Casing Technology delivers a significant reduction in irregular wear⁽¹⁾ and improved fuel economy⁽²⁾ to Michelin's latest wide base single tire for regional operations.

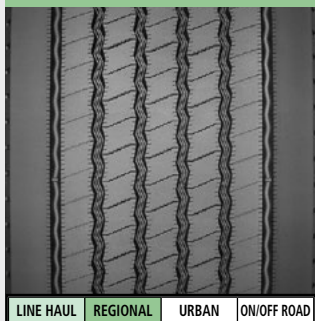
- Irregular wear is reduced by Advanced Casing Technology, microspikes, a solid shoulder and a wide Infini-Coil™.
- Advanced Technology Compounds help reduce rolling resistance – promoting low fuel consumption with no compromise in mileage, durability or casing endurance.
- Outstanding handling comes from an optimized architecture that features wide grooves to promote water evacuation.
- Extended casing life comes from using waved groove bottoms and stone ejectors that help defend against stone drilling.

Sizes	Load Range	Tread Depth	MSPN
445/50R22.5	L	16	33836
455/55R22.5	L	16	47798

(1) Versus MICHELIN® X ONE® XTE® tire in field testing and observation.

(2) Improvement based on comparison vs MICHELIN® X ONE® XTE® tire rolling resistance. Rolling resistance data is determined using drum tests according to ISO 28580 procedures. For more information, see your Michelin Truck Representative. Actual results may vary, and may be impacted by many factors, to include road conditions, weather and environment, driver performance, etc.

REGIONAL



LINE HAUL REGIONAL URBAN ON/OFF ROAD



Directional tread

SmartWay®
Verified

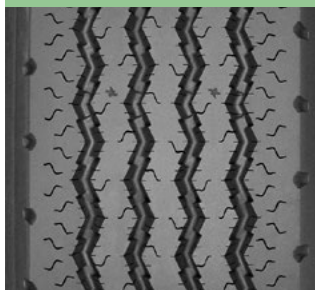
XTA®

The trailer radial optimized for low bed, high cube trailers operations in regional applications.

- Application specific compound.
- Significant groove angles to help resist stone retention drilling.

Sizes	Load Range	Tread Depth	MSPN
215/75R17.5	J	15	82636

REGIONAL



LINE HAUL REGIONAL URBAN ON/OFF ROAD

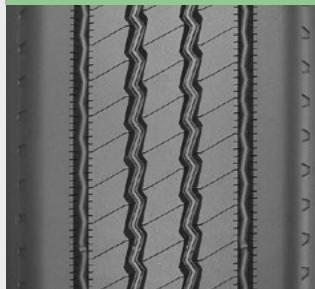
XTE®

The robust trailer radial designed to withstand the demands of high scrub and spread axle service in regional and line haul applications.

- Long tread life from 16/32nds of application-specific compounds.
- Smooth, even wear in high-scrub service from beefy, solid shoulders and trailer optimized design.
- Protection from impacts and curbing promoted by sidewall scallops and curb guard features.
- Standardized casing dimensions help ensure interchangeability with Michelin long haul steer and drive casings for efficient casing management.

Sizes	Load Range	Tread Depth	MSPN
11R22.5	G	16	21307
275/80R22.5	G	16	17706
11R24.5	G	16	07025

REGIONAL



LINE HAUL REGIONAL URBAN ON/OFF ROAD

TRAILER TIRES

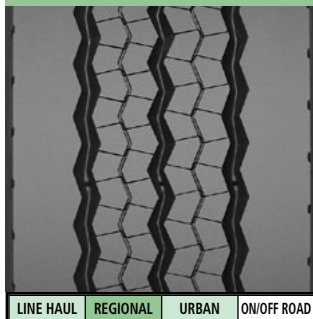
XTE2®

Robust small diameter trailer tire designed to withstand the demands of high scrub and spread axle service on low platform and specialty trailers in regional and line haul applications.

- Long Tread Life – Dual compound tread rubber helps ensure cool operating temperatures, while chip and cut resistant rubber compound helps resist the abrasion/aggression from lateral scrub and rough surfaces.
- Improved Wet Traction – Deep, wide channels help provide excellent water evacuation throughout the life of the tire.
- Excellent Traction – Lateral siping along rib edges help enhance traction and braking in adverse weather conditions.
- Casing Durability – Robust crown design with 4-steel belt package.

Sizes	Load Range	Tread Depth	MSPN
245/70R19.5	J	16	67113
285/70R19.5	J	18	51278

REGIONAL



LINE HAUL

REGIONAL

URBAN

ON/OFF ROAD

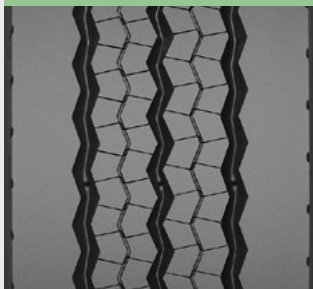
XTE2® +

Robust small diameter trailer tire designed to withstand the demands of high scrub and spread axle service on low platform and specialty trailers in regional and line haul applications.

- Dual compound tread rubber helps ensure cool operating temperatures, while abrasion-resistant rubber compound helps keep tire wear rate low.
- Deep, wide channels help provide excellent water evacuation throughout the life of the tire.
- Lateral siping along rib edges help enhance traction and braking in adverse weather conditions.

Sizes	Load Range	Tread Depth	MSPN
215/75R17.5	H	15	68593

REGIONAL



LINE HAUL

REGIONAL

URBAN

ON/OFF ROAD

XTY®2

Low profile radial designed for rugged, mixed trailer service in on/off road applications.

- Chip and cut-resistant compound helps resist the abusive conditions of on/off road applications.
- Four steel belt construction designed to deliver extra protection for the casing and stability.
- Extra-wide protector ply extends under all the major grooves and helps protect the working plies from most bruising and penetrations.

Sizes	Load Range	Tread Depth	MSPN
275/70R22.5	J	21	01658

ON/OFF ROAD



LINE HAUL

REGIONAL

URBAN

ON/OFF ROAD

PRODUCT AVAILABILITY

LINE HAUL										
Size	Load Range	Tread Name	Smart-way Verified	Catalog Number	Tread Depth 32nd	Wheel Position			Directional	RV Use
245/70R17.5	J	XTA2 ENERGY		78370	13			■		
265/70R19.5	H	X LINE ENERGY T – 19.5		40936	13			■		
11R22.5	G	X LINE ENERGY D	■	35887	23		■			
	G	X LINE ENERGY T	■	92005	12			■		
	G	X LINE ENERGY Z	■	03363	19	■			■	■
	G	XDA5+		14003	30		■			
	G	XDN2		72805	27		■			
	H	X LINE ENERGY Z	■	06697	19	■			■	■
	H	XDN2		64321	27		■			
12R22.5	H	XDN2		51753	27		■			
235/80R22.5	G	XRV		87511	16	■				■
255/80R22.5	G	XRV		59634	16	■				■
275/70R22.5	J	X MULTI Z – 275		31513	18	■				■
275/80R22.5	G	X LINE ENERGY D	■	36859	23		■			
	G	X LINE ENERGY T	■	92052	12			■		
	G	X LINE ENERGY Z	■	03885	19	■			■	■
	G	XDA ENERGY+	■	08024	23		■			
	G	XDA5+		61310	30		■			
	G	XDN2		63465	27		■			
	H	X LINE ENERGY Z	■	66205	19	■			■	■
295/60R22.5	J	X LINE ENERGY Z – 295		35378	14	■				■

AWP - All wheel position/Steer
D - Drive position
T - Trailer position

PRODUCT AVAILABILITY

LINE HAUL										
Size	Load Range	Tread Name	Smart-way Verified	Catalog Number	Tread Depth 32nd	Wheel Position			Directional	RV Use
295/80R22.5	H	XZA2 ENERGY	■	76807	16	■				■
305/70R22.5	L	XRV		93499	16	■				■
315/80R22.5	L	X LINE ENERGY Z		09807	17	■				■
	L	XDN2 GRIP		04355	28		■		■	
365/70R22.5	L	XZA		52215	19	■				■
445/50R22.5	L	X ONE LINE ENERGY D	■	24306	24		■		■	
	L	X ONE LINE ENERGY T	■	84085	13			■		
	L	X ONE LINE GRIP D	■	55210	27		■			
455/55R22.5	L	X ONE LINE GRIP D	■	41721	27		■			
11R24.5	H	X LINE ENERGY T	■	92448	12			■		
	H	X LINE ENERGY Z	■	18748	19	■			■	
	H	XDA5+		97973	30		■			
	H	XDN2		87129	27		■			
275/80R24.5	G	X LINE ENERGY D	■	36992	23		■			
	G	X LINE ENERGY T	■	92981	12			■		
	G	XDA5+		01376	30		■			
	G	XDN2		75684	27		■			
	H	X LINE ENERGY Z	■	81281	19	■			■	

AWP - All wheel position/Steer
D - Drive position
T - Trailer position

PRODUCT AVAILABILITY — REGIONAL

REGIONAL										
Size	Load Range	Tread Name	Smart-way Verified	Catalog Number	Tread Depth 32nd	Wheel Position			Directional	RV Use
						AWP	D	T		
LT215/85R16	E	XPS RIB		39510	15	■				■
	E	XPS TRACTION		35260	17		■			
LT225/75R16	E	XPS RIB		08404	14	■				■
LT235/85R16	E	XPS RIB		13080	15	■				■
LT245/75R16	E	XPS RIB		26848	15	■				■
10R17.5	G	XZA – 17.5		05008	16	■				
215/75R17.5	G	X MULTI Z – 17.5		25151	14	■			■	
	H	XTE 2+		68593	15			■		
	J	XTA		82636	15			■		
245/70R17.5	H	X MULTI T – 17.5		18537	15			■		
225/70R19.5	G	XDS 2 – 19.5		24975	18		■			
	G	XZE		91043	17	■				■
245/70R19.5	H	XDS 2 – 19.5		23134	19		■			
	H	XZE		75997	18	■				■
	J	XTE 2		67113	16			■		
265/70R19.5	G	X MULTI D – 19.5	■	92982	16		■		■	
	G	X MULTI Z – 19.5	■	75319	16	■			■	■
285/70R19.5	H	X MULTI D – 19.5	■	09733	17		■		■	
	H	X MULTI Z – 19.5	■	31459	16	■			■	■
	J	XTE 2		51278	18			■		
10R22.5	G	X MULTI D		74441	22		■			
	G	XZE		99141	21	■				■
11R22.5	G	X MULTI D		33502	28		■			
	G	X MULTI ENERGY D	■	58300	24		■			
	G	XTE		21307	16			■		
	G	XZE 2		78390	22	■				■
	H	X MULTI D		80276	28		■			
	H	X MULTI ENERGY Z	■	03168	20	■			■	
	H	XDS 2		05359	26		■		■	
	H	XZE 2		67042	22	■				■
12R22.5	H	XDS		62208	26		■		■	
	H	XZE ⚡		85335	22	■				■

(1) ⚡ Cut & chip resistant tread compound

AWP - All wheel position/Steer
D - Drive position
T - Trailer position

REGIONAL										
Size	Load Range	Tread Name	Smart-way Verified	Catalog Number	Tread Depth 32nd	Wheel Position			Directional	RV Use
255/70R22.5	H	X MULTI D		76760	24		■			
	H	XZE ☼		61737	18	■				■
275/80R22.5	G	X MULTI D		76710	27		■			
	G	X MULTI ENERGY D	■	63049	24		■			
	G	XTE		17706	16			■		
	G	XZE 2		55895	22	■				■
	H	X MULTI ENERGY Z	■	26902	20	■			■	
	H	XZE		01637	22	■				■
295/60R22.5	J	X MULTI D – 295		20735	21		■		■	
295/80R22.5	H	X COACH HL Z		31078	18	■				■
	H	X MULTIWAY 3D XZE		07719	19	■			■	■
315/80R22.5	L	X MULTIWAY 3D XZE		24903	21	■			■	■
	L	XZUS 2		77510	23	■				
385/55R22.5	L	X MULTI T2		28644	19			■		
385/65R22.5	L	X MULTIWAY HD XZE		26281	19	■				
425/65R22.5	L	XFE (wb) (Steer)		11829	21	■				
445/50R22.5	L	X ONE MULTI ENERGY T	■	33836	16			■	■	
455/55R22.5	L	X ONE MULTI ENERGY T	■	47798	16			■	■	
	M	X ONE XZU S		28513	23	■				
11R24.5	G	XTE		07025	16			■		
	G	XZE 2		91867	22	■				
	H	X MULTI D		27287	28		■			
	H	X MULTI ENERGY D	■	61739	24		■			
	H	XDS 2		06613	26		■		■	
	H	XZE 2		88507	22	■				
275/80R24.5	G	XZE 2		75519	22	■				

AWP - All wheel position/Steer
D - Drive position
T - Trailer position

PRODUCT AVAILABILITY

URBAN										
Size	Load Range	Tread Name	Smart-way Verified	Catalog Number	Tread Depth 32nd	Wheel Position			Directional	RV Use
185/60R15C 94T ⁽⁵⁾	C	AGILIS CROSSCLIMATE C-Metric		02998	11.5	■			■	
205/65R15C 102/100T ⁽⁵⁾	C	AGILIS CROSSCLIMATE C-Metric		04143	11.5	■			■	■
195/75R16C 107/105R ⁽⁵⁾	D	AGILIS CROSSCLIMATE C-Metric		56761	11.5	■			■	■
225/75R16C 121/120R ⁽⁵⁾	E	AGILIS CROSSCLIMATE C-Metric		70411	11.5	■			■	■
235/65R16C 121/119R ⁽⁵⁾	E	AGILIS CROSSCLIMATE C-Metric		09118	11.5	■			■	■
LT215/85R16 115/112R	E	AGILIS CROSSCLIMATE LT-Metric		80033	12.5	■				■
LT225/75R16 115/112R	E	AGILIS CROSSCLIMATE LT-Metric		72022	12.5	■				■
LT235/85R16 120/116R	E	AGILIS CROSSCLIMATE LT-Metric		65681	12.5	■				■
LT245/75R16 120/116R	E	AGILIS CROSSCLIMATE LT-Metric		52347	12.5	■				■
LT265/75R16 123/120R	E	AGILIS CROSSCLIMATE LT-Metric		10257	12.5	■				
LT235/80R17 120/117R	E	AGILIS CROSSCLIMATE LT-Metric		09723	12.5	■				
LT245/70R17 119/116R	E	AGILIS CROSSCLIMATE LT-Metric		42604	12.5	■				
LT245/75R17 121/118R	E	AGILIS CROSSCLIMATE LT-Metric		09917	12.5	■				
LT265/70R17 121/118R	E	AGILIS CROSSCLIMATE LT-Metric		36185	12.5	■				
LT285/70R17 121/118R	E	AGILIS CROSSCLIMATE LT-Metric		83162	12.5	■				
LT265/70R18 124/121R	E	AGILIS CROSSCLIMATE LT-Metric		05791	12.5	■				
LT275/65R18 123/120R	E	AGILIS CROSSCLIMATE LT-Metric		57222	12.5	■				
LT275/70R18 125/122R	E	AGILIS CROSSCLIMATE LT-Metric		76555	12.5	■				
LT265/60R20 121/118R	E	AGILIS CROSSCLIMATE LT-Metric		50977	12.5	■				
LT275/65R20 126/123R	E	AGILIS CROSSCLIMATE LT-Metric		15627	12.5	■				
LT285/60R20 125/122R	E	AGILIS CROSSCLIMATE LT-Metric		19604	12.5	■				
11R22.5	H	X INCITY Z		13712	20	■				
275/70R22.5	J	X INCITY Z		59714	21	■				
305/70R22.5	L	X INCITY Z		02348	22	■				
305/85R22.5	J	X INCITY GRIP D SL		08623	27		■			
	J	X INCITY Z SL		62156	24	■				

AWP - All wheel position/Steer
D - Drive position
T - Trailer position

PRODUCT AVAILABILITY







ON / OFF ROAD									
Size	Load Range	Tread Name	Smart-way Verified	Catalog Number	Tread Depth 32nd	Wheel Position			Directional
						AWP	D	T	
11R22.5	H	X WORKS XDY		89725	30		■		■
	H	X WORKS Z		15701	24	■			
12R22.5	H	X WORKS Z		11073	24	■			
275/70R22.5	J	XTY2		01658	21			■	
315/80R22.5	L	X WORKS XDY		55576	28		■		■
	L	X WORKS Z		64204	23	■			
385/65R22.5	J	XZY3 (wb)		53779	22	■			
425/65R22.5	L	XZY3 (wb)		40321	23	■			
445/65R22.5	L	XZY3 (wb)		83691	23	■			
455/55R22.5	M	X ONE XZY3		11629	23	■			
11R24.5	H	X WORKS GRIP D		51503	32		■		
	H	X WORKS XDY		90022	30		■		■
	H	X WORKS Z		78261	24	■			
	H	XDY-EX2		23274	32		■		

OFF ROAD									
Size	Load Range	Tread Name	Smart-way Verified	Catalog Number	Tread Depth 32nd	Wheel Position			Directional
						AWP	D	T	
365/85R20	J	XZL		56389	28	■			
395/85R20	J	XZL		54331	33	■			
	J	XZL+		94675	26	■			
24R21	H	XZL		76025	31	■			
445/65R22.5	L	XZL (wb)		84103	27	■			

AWP - All wheel position/Steer
D - Drive position
T - Trailer position

PRODUCT NAMING AND SEGMENTATION

The specific tread design used should only be considered after the vehicle type and user vocation has been examined. There are several categories of tire service applications:

SEGMENT	APPLICATION ⁽¹⁾ NAME AND PICTOGRAM	APPLICATIONS	VOCATIONS
Line Haul	A 	Heavy loads and high speeds for extended periods of time. Primarily interstate or divided highway.	<ul style="list-style-type: none"> • Truckload Carrier • Refrigerated
Regional	E 	Regional is medium to heavy loads, frequently on 2-lane roads. Vehicles generally return to home base at night. Emerging Super Regional application combines driving conditions seen in Line Haul and Regional applications.	<ul style="list-style-type: none"> • LTL Dry Van • Parcel • Food & Beverage • Pick-up & Delivery
On/Off Road	Y 	Heavy loads and slower speeds, operating on a mixture of improved secondary and aggressive road surface.	<ul style="list-style-type: none"> • Construction and Mining • Forestry and Logging • Oil Field
Off Road	L 	Very heavy loads normally on poor or unimproved surfaces. ⁽²⁾	<ul style="list-style-type: none"> • Forestry and Logging • Oil Field
Urban	U 	Stop-and-go delivery ... service within a limited radius – metro and suburban.	<ul style="list-style-type: none"> • Urban Buses • Sanitation and Refuse • Pick-up & Delivery
Coach and Recreational	 	Coaches and recreational vehicles	<ul style="list-style-type: none"> • Highway & Regional Coach • RV

D = Drive Positions, T = Trailer Positions, Z = All-Wheel Positions

(1) A, E, Y, L, U = Traditional Application Designations

X° LINE, X° MULTI, X° WORKS, X° FORCE, X° INCITY, X° COACH = New Application Designations

Michelin will progressively replace the traditional application designations with the new ones.

(2) Off Road Tires can also be used On Road if DOT is present.

Federal Motor Carrier Safety Regulations, 9 C.F.R. § 395.75 (d), specify that “no bus shall be operated with regrooved, recapped or retreaded tires on the front wheels.”

To learn more please contact your Michelin Sales Representative or visit
www.michelintruck.com

To order more brochures, please call Promotional Fulfillment Center
1-800-859-0665 Monday through Friday, 8 a.m. to 8 p.m. Eastern Time

United States

Michelin North America, Inc.

One Parkway South, Greenville, SC 29615 – **1-888-622-2306**

Canada

Michelin North America (Canada), Inc.

2500 Daniel Johnson, Suite 500, Laval, Quebec H7T 2P6 – **1-888-871-4444**

©2019 Michelin North America, Inc. All rights reserved.

© 2019 MNA(C)I. All rights reserved.

The Michelin Man is a registered trademark owned by Michelin North America, Inc. MICHELIN® tires and tubes are subject to a continuous development program. Michelin North America, Inc. reserves the right to change product specifications at any time without notice or obligations.