



URBAN APPLICATIONS

# **THE MICHELIN<sup>®</sup> X<sup>®</sup> INCITY GRIP D SL TIRE**

All weather premium drive tire optimized for exceptional traction in urban transit application.\* This is a Single Life tire that offers optimized mileage and durability.

Line Haul	Regional	Urban	On/Off Road
<input type="checkbox"/>	<input type="checkbox"/>	<input checked="" type="checkbox"/>	<input type="checkbox"/>

Recommended  Acceptable



\* "No bus shall be operated with regrooved, recapped or retreaded tires on the front wheels." US Code of Federal Regulations: Title 49, Transportation; Part 393.75.

[www.michelintruck.com](http://www.michelintruck.com)



**MICHELIN**

# THE MICHELIN® X® INCITY GRIP D SL TIRE

All weather premium drive tire optimized for exceptional traction in urban transit application.<sup>(1)</sup> This is a Single Life tire that offers optimized mileage and durability.

## Exceptional Mileage –

Long tread life

- Next-generation application specific compounds
- Unique tread design

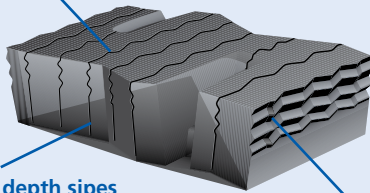
## Exceptional Handling –

Excellent traction and stability

- **Wide open shoulder grooves**  
Outstanding traction
- **Matrix siping technology**  
Traction and stability
- **Extra-wide tread**  
Optimized for all-weather traction

## Matrix Siping

Matrix sipes provide inter-locking action which offers excellent traction and even wear.



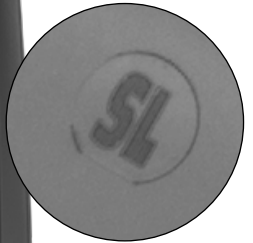
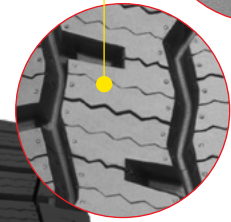
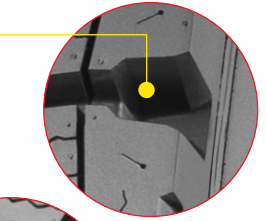
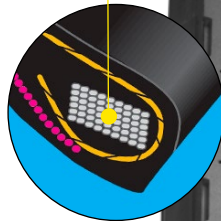
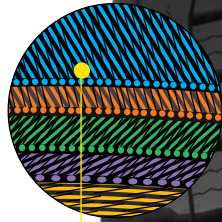
Full depth sipes help provide excellent traction throughout the life of the tread.

Zig-Zag groove walls help provide optimized biting edges and excellent water and snow evacuation.

## Optimized Tread Life

Longer tread life

- **Full-width protector ply**
- **Rectangular bead bundle**
  - Reduces heat and fatigue
  - Michelin exclusive
- **Inner liner**
  - To resist migration of air molecules into the casing



**SL (Single Life)  
DO NOT RETREAD**

Line Haul	Regional	Urban	On/Off Road
-----------	----------	-------	-------------

■ Recommended □ Acceptable

Size	Load Range	Catalog Number	Tread Depth	Max. Speed (*)	Loaded Radius		Overall Diameter		Overall Width (‡)		Approved Wheels (Measuring wheel listed first.)	Min. Dual Spacing (‡)		Revs Per Mile	Max. Load and Pressure Single			Max. Load and Pressure Dual				
			32nds	mph	in.	mm	in.	mm	in.	mm		in	mm		lbs.	psi	kg.	kPa	lbs.	psi	kg.	kPa
305/8522.5	J	08623	27	68	20.0	508	42.9	1090	11.8	300	9.00, 8.25	13.5	343	483	7830	120	3550	830	7160	120	3250	830

(\*) Exceeding the lawful speed limit is neither recommended nor endorsed.

(‡) Overall width will change 0.1 inch (2.5 mm) for each 1/4 inch change in wheel width. Minimum dual spacing should be adjusted accordingly.

(1) "No bus shall be operated with regrooved, recapped or retreaded tires on the front wheels." US Code of Federal Regulations: Title 49, Transportation; Part 393.75.

MICHELIN® tires and tubes are subject to a continuous development program. Michelin North America, Inc. reserves the right to change product specifications at any time without notice or obligations. MNA, Inc. continually updates its product information to reflect any changes in Industry Standards. Printed material may not reflect the current Load and Inflation information. Please visit [www.michelintruck.com](http://www.michelintruck.com) for the latest product information. The actual load and inflation pressure used must not exceed the wheel manufacturer's maximum conditions. Never exceed a wheel manufacturer's limits without permission from the component manufacturer.

TO FIND OUT MORE  
[michelintruck.com](http://michelintruck.com)

FIND US ON FACEBOOK  
[michelintruck.com](http://michelintruck.com)

CONTACT US BY EMAIL  
[michelintruck.com/contact-us/](mailto:michelintruck.com/contact-us/)

CONTACT US BY TELEPHONE  
1-888-622-2306