

MICHELIN® SMARTWAY® VERIFIED RETREADS



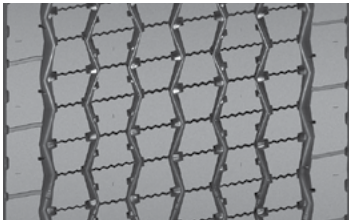
Michelin supports the U.S. Environmental Protection Agency's (EPA) SmartWay® strategy of including retread products with new tires to reduce the fuel consumption, and greenhouse gas emissions, of line-haul Class 8 trucks. Additionally, SmartWay verified MICHELIN® retreads are compliant with the California Air Resources Board (CARB) Greenhouse Gas regulation for low rolling resistance tires.

MICHELIN® SmartWay® low-rolling resistance retreads reduce fleet operating costs by saving fuel and extending the life of the tire. SmartWay also aligns with Michelin's core value of respect for the environment.

More information about the SmartWay® program as well as verified low rolling resistance tires and retreads can be found at epa.gov/smartway.

SmartWay®
Verified

DRIVE POSITION RETREADS



MICHELIN® X ONE® LINE ENERGY D Pre-Mold Retread

- No compromise fuel efficiency⁽¹⁾ and mileage delivered by the Dual Energy Compound Tread, with a precisely balanced Fuel and Mileage layer on top of a cool running Fuel and Durability layer
- Extended tread life from use of winged tread technology, providing maximum shoulder adhesion
- MICHELIN® ON MICHELIN®⁽²⁾
- Deep 22/32nds tread depth



MICHELIN® X® LINE ENERGY D Pre-Mold Retread

- No compromise fuel efficiency⁽²⁾ and wear resistance with Dual Compound Tread Technology, delivering a top Mileage layer over a cool running Fuel and Durability layer
- Guaranteed 25% more miles than any competitor line haul drive retread⁽³⁾
- MICHELIN® ON MICHELIN®⁽²⁾
- 21/32nds tread depth



MICHELIN® X ONE® XDA-HT® Pre-Mold Retread

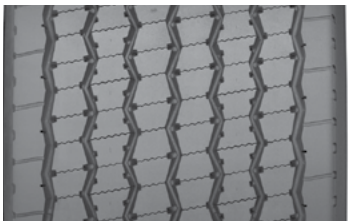
- Aggressive lug-type tread design
- Increased traction
- Increased tread wear
- Optimized for Regional and Line Haul operations
- Cool running compound
- Deep 26/32nds tread depth



MICHELIN® X® MULTI ENERGY D Pre-Mold Retread

- Guaranteed 25% longer tread life*, with exceptional SmartWay® fuel efficiency⁽¹⁾ due to Dual Energy Compound tread technology
- Outstanding traction and even wear is delivered through Matrix™ siping
- MICHELIN® ON MICHELIN®⁽²⁾
- 21/32nds tread depth

*As compared to MICHELIN® XDA2® 23 Pre-Mold™ Retreads



MICHELIN® X ONE® LINE ENERGY D Custom Mold Retread

- Driver confidence comes from seamless, splice-less, new tire appearance, outstanding traction from Zig-Zag Siping and maximum tread to shoulder adhesion.
- SmartWay® fuel economy from a unique fuel efficient Advanced Technology Compound Tread
- 21/32nds original tread depth



MICHELIN® X® LINE ENERGY D Custom Mold Retread

- Driver confidence comes from seamless, splice-less, new tire appearance, outstanding traction from Zig-Zag Siping and maximum tread to shoulder adhesion.
- SmartWay® fuel economy from a unique fuel efficient Advanced Technology Compound Tread
- 21/32nds original tread depth



MICHELIN® XZE® Pre-Mold Retread

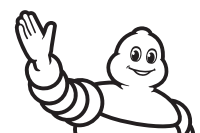
All-position retread designed for regional and line haul applications requiring exceptional traction and tire wear resistance.

- SmartWay® fuel economy⁽¹⁾
- Solid shoulders to help withstand scrub and abrasion.
- Deep siping for optimized traction.
- Available siped and as a Custom Mold retread.

(1) Based on industry standard rolling resistance testing of comparable tires or retreads. Actual results may vary, and may be impacted by many factors, to include road conditions, weather and environment, driver performance, etc.

(2) A premium MICHELIN® retread with special guarantee(s) when retreaded on a MICHELIN® casing. See guarantee(s) at michelintruck.com for details.

(3) See Guarantee for details.



MICHELIN

DRIVE POSITION RETREADS



MICHELIN® XDA2® 19 AT⁽¹⁾ and XDA2® 23 AT⁽¹⁾ Pre-Mold Retreads

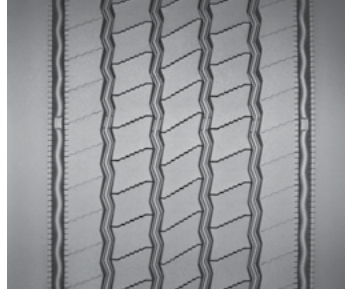
- Fuel-efficient⁽²⁾ Advanced (AT) Technology compound
- No compromise performance
- Modified tread block design optimized for long, even wear
- XDA2® 19 at 19/32nds tread depth and XDA2® 23 at 23/32nds tread depth



MICHELIN® XDA2® 23 AT⁽¹⁾ Custom Mold Retread

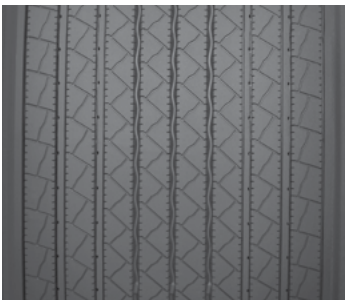
- Fuel-efficient⁽²⁾ Advanced Technology (AT) Compound
- No compromise performance
- Modified tread block design optimized for long, even wear
- 23/32nds tread depth

TRAILER POSITION RETREADS



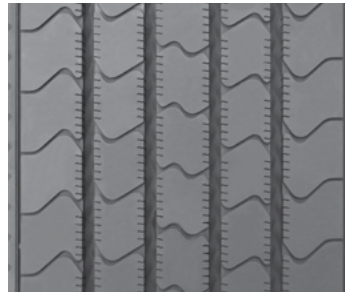
MICHELIN® X ONE® MULTI ENERGY T Pre-Mold Retread

- Advanced Technology compounds help reduce rolling resistance – promoting low fuel consumption with no compromise in mileage.
- Full 15/32nds tread depth helps maximize wear performance while delivering SmartWay® compliant rolling resistance.
- Irregular wear is reduced by microspikes and a solid shoulder.
- Outstanding handling comes from an optimized architecture that features wide grooves to promote water evacuation.
- MICHELIN® ON MICHELIN®⁽⁴⁾
- 15/32nds tread depth



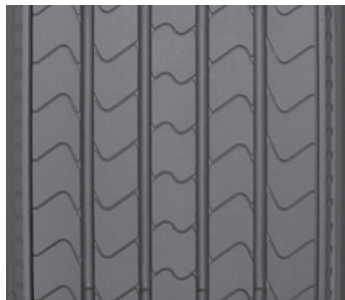
MICHELIN® X ONE® XTA® Custom Mold Retread

- Tread design optimized to promote stability and resistance to uneven wear
- Fuel-efficient⁽²⁾ Advanced Technology Compound
- 13/32nds tread depth



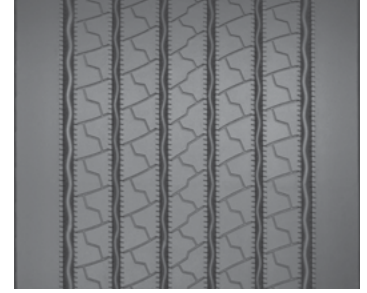
MICHELIN® X LINE ENERGY T Pre-Mold Retread

- New siping technology and decoupling groove to support even wear on the trailer axle position
- Wider tread widths available – Stress on the tread is more evenly distributed for long, even tread life
- Advanced compound tread – Provides 5.0% lower rolling resistance vs. the MICHELIN® XT-1® AT Pre-Mold retread.⁽⁵⁾
- Variable groove bottom features to help resist stone retention for longer wear
- Available siped.



MICHELIN® XT-1® AT⁽¹⁾ Custom Mold Retread

- Fuel-efficient⁽²⁾ Advanced Technology (AT) Compound
- No compromise performance
- 12/32nds tread depth



MICHELIN® X ONE® LINE ENERGY T Pre-Mold Retread

- Up to 15% improvement in removal mileage⁽³⁾ when retreaded on a MICHELIN® X ONE® LINE ENERGY T casing
- Leading SmartWay® fuel efficiency comes from using Michelin's Advanced Technology Compounds that deliver low rolling resistance with excellent mileage
- Long tread life is enhanced using a Winged tread for maximum shoulder adhesion
- MICHELIN® ON MICHELIN®⁽⁴⁾
- 13/32nds tread depth

(1) AT designates Advanced Technology™ compounds for fuel savings.

(2) Based on industry standard rolling resistance testing of comparable drive tires and retreads. Actual results may vary, and may be impacted by many factors, to include road conditions, weather and environment, driver performance, etc.

(3) Based on current pull point vs MICHELIN® X ONE® XTA® Pre-Mold™ Retread, using field testing and observation.

(4) A premium MICHELIN® retread with special guarantee(s) when retreaded on a MICHELIN® casing. See guarantee(s) at michelintruck.com for details.

(5) Based on external rolling resistance tests of the MICHELIN® X® Line Energy T Pre-Mold retread in 230mm width and current MICHELIN® XT-1® AT Pre-Mold retread in 225mm width using ISO 28580 test method in tire size YOK RY617 295/75R22.5. Actual on-road fuel saving results may vary, and may be impacted by many factors, to include road conditions, weather, environment, combination of steer and trailer tires used, driving habits, tire size, equipment and maintenance.