



REGIONAL APPLICATIONS

THE MICHELIN® X® MULTI ENERGY D PRE-MOLD™ RETREAD



High mileage, fuel efficient SmartWay® verified drive retread, optimized for regional and emerging super regional applications.

Line Haul	Regional	Urban	On/Off Road
<input checked="" type="checkbox"/> Recommended	<input checked="" type="checkbox"/> Recommended	<input type="checkbox"/> Acceptable	<input type="checkbox"/> Acceptable



BENEFITS:

25% Longer Tread Life⁽¹⁾

Guaranteed more miles vs competitive SmartWay® regional drive retreads⁽²⁾

- **Dual Energy Compound Tread**
Top layer designed to offer exceptional wear resistance
- **SipeSaver Technology**
Teardrop design at the base of the shoulder sipes relieves stress and helps prevent tearing
- **Optimized Footprint**
Wide footprint helps improve stability

Exceptional Fuel Efficiency⁽³⁾ and Tread/Casing Life

No compromise fuel economy

- **Dual Energy Compound Tread**
 - Precisely balanced tread compounds deliver exceptional fuel efficiency as well as exceptional wear properties to resist scrub (Top Layer)
 - Cool tread rubber minimizes internal casing temperatures for low rolling resistance and extended casing life (Bottom layer)

Outstanding Traction and Even Wear

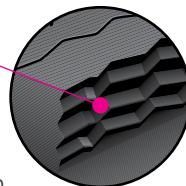
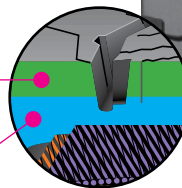
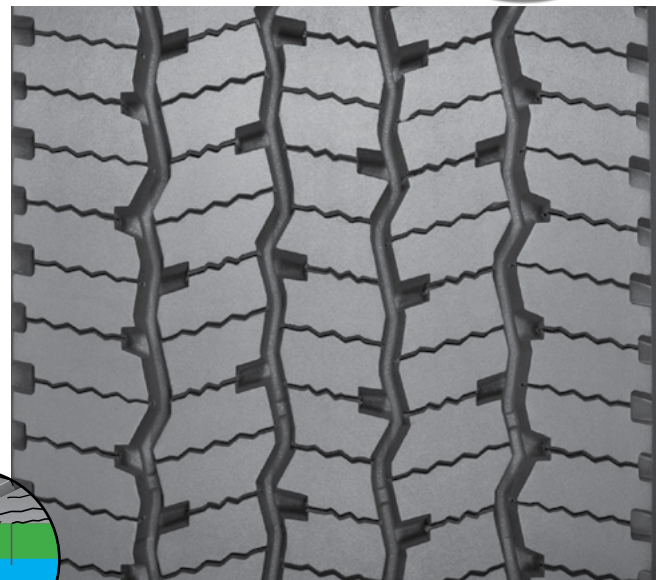
Realize multiple benefits with Matrix® Siping

- **Matrix Siping**
 - Matrix sipes provide inter-locking action which offer excellent traction and even wear
 - Zig-Zag groove walls provide optimized biting edges and excellent water and snow evacuation

Optimized Traction

Confident handling

- **Shoulder Siping**
Delivers additional traction in adverse weather conditions without compromising tread life in regional applications



Tread Size	Metric	220	230	240
Tread Depth	Metric	17 mm		
	Inches	21/32"		

1. As compared to MICHELIN® XDA2® 23 Pre-Mold™ Retreads
2. Based on industry standard rolling resistance testing of comparable tires or retreads. Actual results may vary, and may be impacted by many factors, to include road conditions, weather and environment, driver performance, etc.

MICHELIN on MICHELIN Guarantee

A premium MICHELIN® retread with special guarantee(s) when retreaded on a MICHELIN® casing. See guarantee(s) at michelintruck.com for details.

TO FIND OUT MORE
michelintruck.com

FIND US ON FACEBOOK
michelintruck.com

CONTACT US BY EMAIL
michelintruck.com/contact-us/

CONTACT US BY TELEPHONE
1-888-622-2306

Michelin North America Inc., One Parkway South, Greenville, SC 29615, 1-888-622-2306
Copyright © 2018 Michelin North America, Inc. The Michelin Man is a registered trademark owned by Michelin North America, Inc. All rights reserved.
An Equal Opportunity Employer PDF only (07/18)

www.michelintruck.com

