



LINE HAUL APPLICATIONS

# THE MICHELIN® X ONE® LINE ENERGY T PRE-MOLD™ RETREAD



The MICHELIN® X ONE® LINE ENERGY T Pre-Mold™ Retread offers exceptional SmartWay® fuel economy, long tread life, and the MICHELIN on MICHELIN guarantee<sup>(1)</sup> in a line haul trailer retread.

Line Haul	Regional	Urban	On/Off Road
-----------	----------	-------	-------------

■ Recommended    □ Acceptable

SmartWay®  
Verified

## BENEFITS:

### Excellent Mileage

Up to 15% improvement in removal mileage<sup>(2)</sup>

- **Optimized Architecture**  
Microsipes and a solid shoulder help resist irregular wear
- **Tread Depth**  
Full 13/32nds of tread depth

### Leading SmartWay® Fuel Efficiency<sup>(3,4)</sup>

Improved fuel efficiency<sup>(5)</sup>

- **Advanced Technology Compounds**  
Designed to deliver low rolling resistance with excellent mileage

### Durability

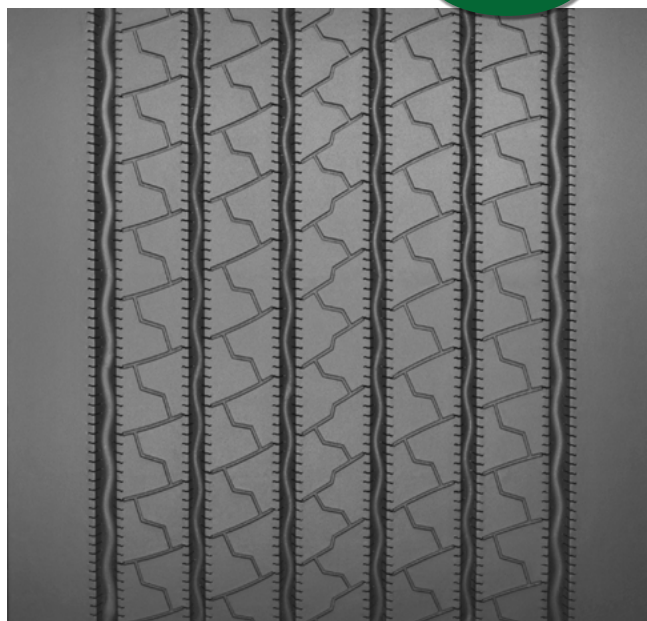
Long life

- **Winged Tread**  
Provides maximum shoulder adhesion
- **Waved Groove Bottoms**  
Help prevent stone drilling

### Driver Confidence

#### Outstanding Handling

- **Optimized Architecture**  
Wide grooves promote improved water evacuation



Tread Size	Metric	375/425 <sup>(6)</sup>
Tread Depth	Metric	10 mm
	Inches	13/32"

(1) Guaranteed second trailer retread if placed on MICHELIN® X One® casing. See MICHELIN® on MICHELIN® X One® guarantee at [www.michelintruck.com](http://www.michelintruck.com) for details.  
(2) Based on current pull point vs MICHELIN® X ONE® XTA® Pre-Mold™ Retread, using field testing and observation, when retreaded on a MICHELIN® X ONE® LINE ENERGY T casing.  
(3) Based on internal tests against SmartWay® requirements.  
(4) Fuel savings are estimates based on comparative rolling resistance. Actual on-road savings may vary.  
(5) Versus MICHELIN® X ONE® XTA® Pre-Mold™ Retread.  
(6) Tread widths with two measurements have wings. The first number is tread base width in mm. The second number is the overall width, wing tip to tip.  
The 375/425 tread fits on a 445 MICHELIN® X One® casing.

TO FIND OUT MORE  
[michelintruck.com](http://michelintruck.com)

FIND US ON FACEBOOK  
[michelintruck.com](http://michelintruck.com)

CONTACT US BY EMAIL  
[michelintruck.com/contact-us/](mailto:michelintruck.com/contact-us/)

CONTACT US BY TELEPHONE  
1-888-622-2306

Michelin North America Inc., One Parkway South, Greenville, SC 29615, 1-888-622-2306  
Copyright © 2018 Michelin North America, Inc. The Michelin Man is a registered trademark owned by Michelin North America, Inc. All rights reserved.  
An Equal Opportunity Employer PDF only (07/18)

[www.michelintruck.com](http://www.michelintruck.com)

