



LINE HAUL & REGIONAL APPLICATIONS

# THE MICHELIN® X ONE® LINE GRIP D PRE-MOLD RETREAD



Building on the Michelin new tire heritage, the MICHELIN® X ONE® LINE GRIP D retread is the longest-wearing, best traction MICHELIN® X One drive retread for line haul and regional applications.

Line Haul	Regional	Urban	On/Off Road
-----------	----------	-------	-------------

Recommended    Acceptable

## BENEFITS:

### Long Tread Life –

More miles

#### • Dual Compound Tread

Exclusive, unique two-layer compound designed to minimize casing temperatures for longer tread and casing life.

- Open Shoulder
- Matrix Siping

### Driver Confidence –

Outstanding traction with Matrix siping

- **Matrix sipes** provide inter-locking action which offers excellent traction and even wear
- **Zig-Zag groove walls** offer optimized biting edges and excellent water and snow evacuation.
- **Full depth sipes** deliver excellent traction throughout the life of the tread.

### Fuel Economy<sup>(1)</sup> –

Less fuel

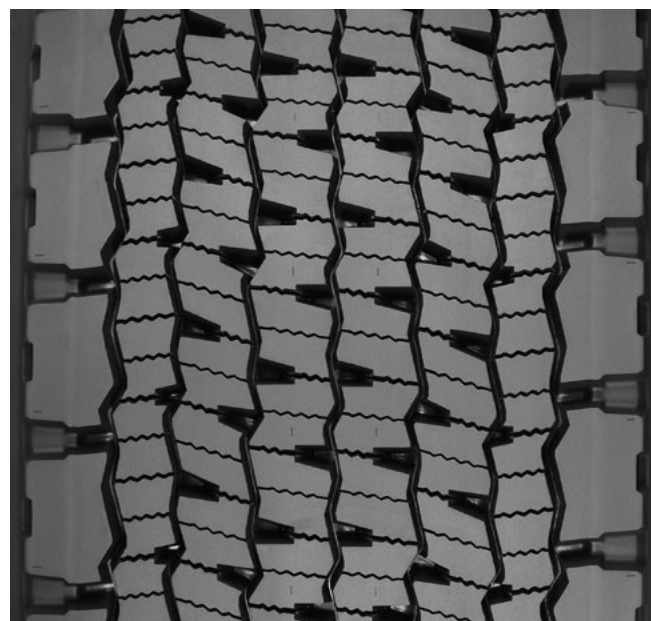
- Dual Compound Tread

### Durability –

Improved shoulder adhesion

- Winged Tread

Provides maximum shoulder adhesion in high scrub applications



Tread Size	Metric	375/425 <sup>(2,3)</sup>	385/435 <sup>(2,4)</sup>
Tread Depth	Metric	21 mm	
	Inches	27/32"	

- (1) Based on industry standard rolling resistance testing of comparable tires and retreads. Actual results may vary, and may be impacted by many factors, to include road conditions, weather and environment, driver performance, etc.
- (2) Tread widths with two measurements have wings. The first number is tread base width in mm. The second number is the overall width, wing tip to tip.
- (3) The 375/425 tread fits on a 445 Michelin® X One® casing.
- (4) The 385/435 tread fits on a 455 Michelin® X One® casing.

### MICHELIN on MICHELIN Guarantee

A premium MICHELIN® retread with special guarantee(s) when retreaded on a MICHELIN® casing. See guarantee(s) at [michelintruck.com](http://michelintruck.com) for details.

TO FIND OUT MORE  
US: [michelintruck.com](http://michelintruck.com)  
CA: [michelintruck.com/en\\_ca](http://michelintruck.com/en_ca)

FIND US ON FACEBOOK  
[michelintruck.com](http://michelintruck.com)

CONTACT US BY EMAIL  
US: [michelintruck.com/contact-us/](mailto:michelintruck.com/contact-us/)  
CA: [michelintruck.com/en\\_ca/contact-us/](mailto:michelintruck.com/en_ca/contact-us/)

CONTACT US BY TELEPHONE  
US: 1-888-622-2306  
CA: 1-888-871-4444

Michelin North America Inc., One Parkway South, Greenville, SC 29615  
Michelin North America (Canada) Inc., 2500 Daniel Johnson Blvd., Suite 500, Quebec H7T 2P6  
© 2019 Michelin North America, Inc. The Michelin Man is a registered trademark owned by Michelin North America, Inc. All rights reserved. An Equal Opportunity Employer. PDF Only. (02/19)  
© 2019 MNA(C). All rights reserved.

[www.michelintruck.com](http://www.michelintruck.com)

