



REGIONAL APPLICATIONS

# THE MICHELIN® X ONE® MULTI ENERGY T PRE-MOLD™ RETREAD



## MICHELIN RETREAD TECHNOLOGIES

A SmartWay® verified trailer position retread which ensures the right balance of outstanding removal mileage, reduced irregular wear and fuel efficiency, optimized for regional applications.

Line Haul	<b>Regional</b>	Urban	On/Off Road
<input checked="" type="checkbox"/> Recommended	<input checked="" type="checkbox"/> Recommended	<input type="checkbox"/> Acceptable	<input type="checkbox"/> Acceptable

### BENEFITS:



#### Outstanding Mileage

Excellent removal mileage

- **Tread Depth**

Full 15/32nds of tread depth

#### Durability

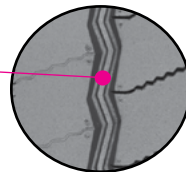
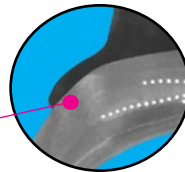
Long life

- **Winged Tread**

Provides maximum shoulder adhesion

- **Waved Groove Bottoms**

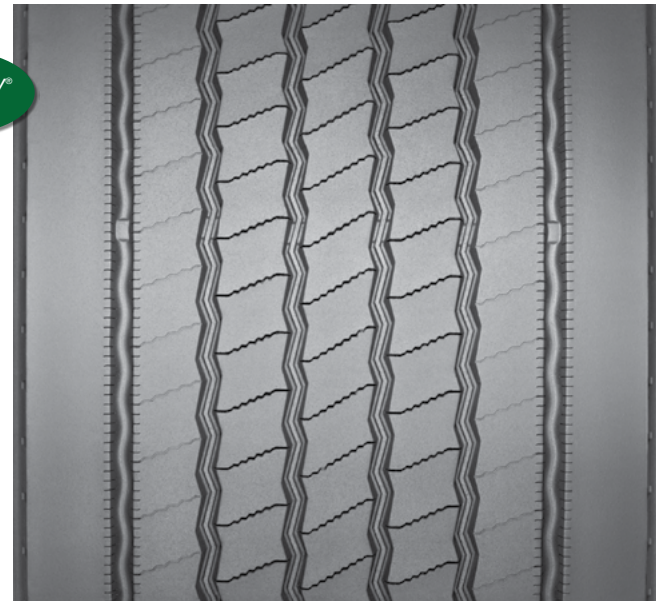
Help prevent stone drilling



#### Irregular Wear Reduction

- **Optimized Architecture**

Microsipes and a solid shoulder help resist irregular wear



Tread Size	Metric	375/425 <sup>(2)</sup>	385/435 <sup>(2)</sup>
Tread Depth	Metric	12 mm	12 mm
	Inches	15/32"	15/32"

#### SmartWay® Fuel Efficiency<sup>(3,4)</sup>

Improved Fuel Efficiency<sup>(5)</sup>

- **Advanced Technology Compounds**

Designed to deliver low rolling resistance with excellent mileage

#### MICHELIN on MICHELIN Guarantee

A premium MICHELIN® retread with special guarantee(s) when retreaded on a MICHELIN® casing. See guarantee(s) at michelintruck.com for details.

(1) A premium MICHELIN® retread with special guarantee(s) when retreaded on a MICHELIN® casing. See guarantee(s) at michelintruck.com for details.

(2) Tread widths with two measurements have wings. The first number is tread base width in mm. The second is the overall width, wing tip to tip.

(3) Based on internal tests against SmartWay® requirements.

(4) Based on industry standard rolling resistance testing of comparable tires & retreads. Actual results may vary, and may be impacted by many factors, to include road conditions, weather and environment, driver performance, etc.

(5) Versus MICHELIN® X ONE® XTE® Pre-Mold™ Retread.

TO FIND OUT MORE  
[michelintruck.com](http://michelintruck.com)

FIND US ON FACEBOOK  
[michelintruck.com](http://michelintruck.com)

CONTACT US BY EMAIL  
[michelintruck.com/contact-us/](mailto:michelintruck.com/contact-us/)

CONTACT US BY TELEPHONE  
1-888-622-2306

Michelin North America Inc., One Parkway South, Greenville, SC 29615, 1-888-622-2306  
Copyright © 2018 Michelin North America, Inc. The Michelin Man is a registered trademark owned by Michelin North America, Inc. All rights reserved.  
An Equal Opportunity Employer PDF only (07/18)

[www.michelintruck.com](http://www.michelintruck.com)

