



URBAN APPLICATIONS

THE MICHELIN® X ONE® XZU® S PRE-MOLD™ RETREAD



| | | | |
|-----------|----------|--------------|-------------|
| Line Haul | Regional | Urban | On/Off Road |
|-----------|----------|--------------|-------------|

Recommended Acceptable

The MICHELIN® X ONE® XZU® S Pre-Mold™ Retread is a multipurpose, all axle, new generation wide-based single, designed with traction and durability features for demanding urban applications.

BENEFITS:

Enhanced Durability –

Casing temperature

- **Co-Ex technology, unique two layer compound**

Stone drill resistance

- **Variable pitch groove walls and groove bottom protectors**

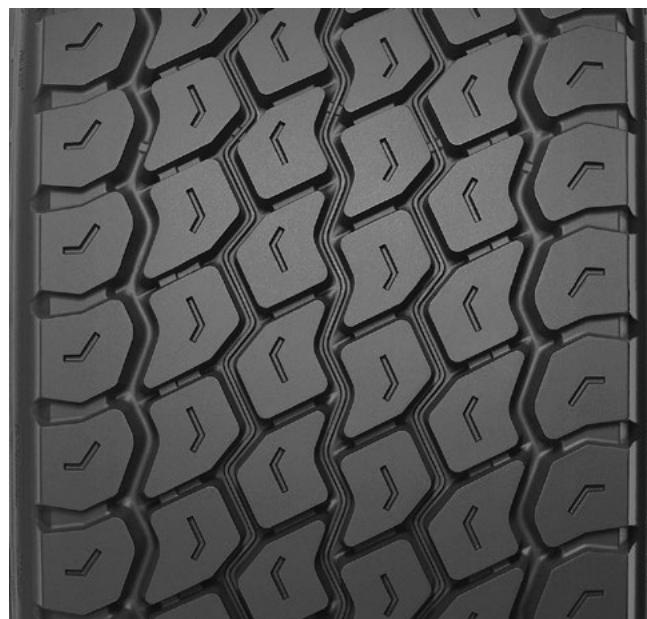
Improved Traction –

All weather

- **Optimized tread design**
- **Deep 23/32nds tread depth**

Max Secured Tread –

- Winged tread
- **Provides maximum tread-to-shoulder adhesion in high scrub applications**



| | | |
|-------------|--------|------------------------|
| Tread Size | Metric | 385/435 ⁽¹⁾ |
| | | |
| Tread Depth | Metric | 18 mm |
| | Inches | 23/32" |

(1) Tread widths with two measurements have wings. The first number is tread base width in mm. The second number is the overall width, wing tip to tip.

TO FIND OUT MORE
michelintruck.com

FIND US ON FACEBOOK
michelintruck.com

CONTACT US BY EMAIL
michelintruck.com/contact-us/

CONTACT US BY TELEPHONE
1-888-622-2306

Michelin North America Inc., One Parkway South, Greenville, SC 29615, 1-888-622-2306
Copyright © 2018 Michelin North America, Inc. The Michelin Man is a registered trademark owned by Michelin North America, Inc. All rights reserved.
An Equal Opportunity Employer PDF only (07/18)

www.michelintruck.com

