



URBAN APPLICATIONS

# THE MICHELIN® X ONE® XZU®S + PRE-MOLD™ RETREAD



## MICHELIN RETREAD TECHNOLOGIES

The MICHELIN® X ONE® XZU®S+ Pre-Mold™ Retread is an industry leading, all position, next generation wide-base single, designed with 50% greater wear life\* and durability for demanding urban applications.

Line Haul	Regional	<b>Urban</b>	On/Off Road
-----------	----------	--------------	-------------

Recommended  Acceptable

### BENEFITS:

#### 50% Greater Wear Life\* –

Long wear

- **Optimized rib tread design**
- **Deep 29/32nds tread depth**

#### Enhanced Durability –

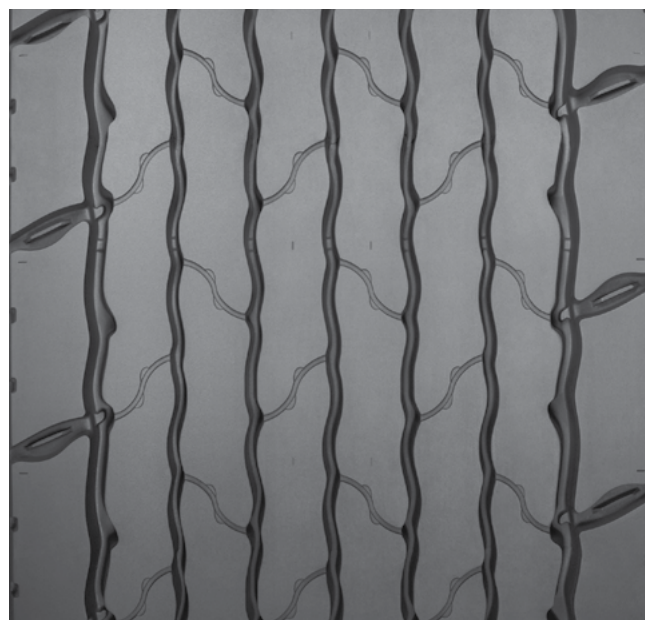
Minimizes casing temperature

- **Co-Ex technology, unique two layer compound**

#### Maximum Secured Tread –

Winged tread

- **Provides maximum tread-to-shoulder adhesion in high scrub applications**



(1) Tread widths with two measurements have wings. The first number is tread base width in mm. The second number is the overall width, wing tip to tip.

\* Vs. MICHELIN® X ONE® XZU®S Pre-Mold™ Retread.

Used in intermittent highway service with maximum speed of 65 mph.

Tread Size	Metric	385/435 <sup>(1)</sup>
Tread Depth	Metric	23 mm
	Inches	29/32"

TO FIND OUT MORE  
[michelintruck.com](http://michelintruck.com)

FIND US ON FACEBOOK  
[michelintruck.com](http://michelintruck.com)

CONTACT US BY EMAIL  
[michelintruck.com/contact-us/](mailto:michelintruck.com/contact-us/)

CONTACT US BY TELEPHONE  
**1-888-622-2306**

Michelin North America Inc., One Parkway South, Greenville, SC 29615, 1-888-622-2306  
Copyright © 2018 Michelin North America, Inc. The Michelin Man is a registered trademark owned by Michelin North America, Inc. All rights reserved.  
An Equal Opportunity Employer PDF only (07/18)

[www.michelintruck.com](http://www.michelintruck.com)

