



LINE HAUL APPLICATIONS

THE MICHELIN® XDA2® 23 AT CUSTOM MOLD RETREAD



The MICHELIN® XDA2® 23 AT⁽¹⁾ Custom Mold Retread is a drive position retread designed for fuel savings, durability, and all-weather traction for line haul applications.

Line Haul	Regional	Urban	On/Off Road
<input checked="" type="checkbox"/>	<input type="checkbox"/>	<input type="checkbox"/>	<input type="checkbox"/>

Recommended Acceptable

BENEFITS:

Fuel Efficient Operation⁽²⁾ –

Low rolling resistance

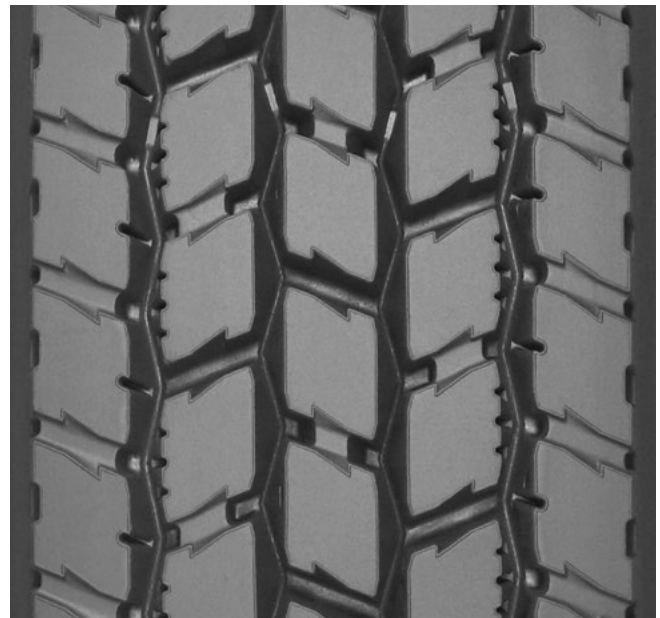
- **Advanced Technology compound**

Long Tread Life –

Long, even wear

- **Modified tread block design**
- **23/32nds tread depth**

Also available as a Pre-Mold Retread.



Casing Size	Tread Depth
11R22.5	23/32"
11R24.5	
275/80R22.5	
275/80R24.5	

(1) AT designated Advanced Technology Compounds for fuel savings

(2) Fuel savings are estimates based on comparative rolling resistance. Actual on-road savings may vary.

TO FIND OUT MORE
michelintruck.com

FIND US ON FACEBOOK
[michelintruck.com](https://www.facebook.com/michelintruck.com)

CONTACT US BY EMAIL
michelintruck.com/contact-us/

CONTACT US BY TELEPHONE
1-888-622-2306

Michelin North America Inc., One Parkway South, Greenville, SC 29615, 1-888-622-2306
Copyright © 2019 Michelin North America, Inc. The Michelin Man is a registered trademark owned by Michelin North America, Inc. All rights reserved.
An Equal Opportunity Employer PDF only (01/19)

www.michelintruck.com

