



REGIONAL APPLICATIONS

THE MICHELIN® XZA® 17.5 TIRE

All-position radial with proven versatility in regional and line haul applications.

Line Haul	Regional	Urban	On/Off Road
<input type="checkbox"/>	<input checked="" type="checkbox"/>	<input type="checkbox"/>	<input type="checkbox"/>

Recommended Acceptable



www.michelintruck.com



MICHELIN

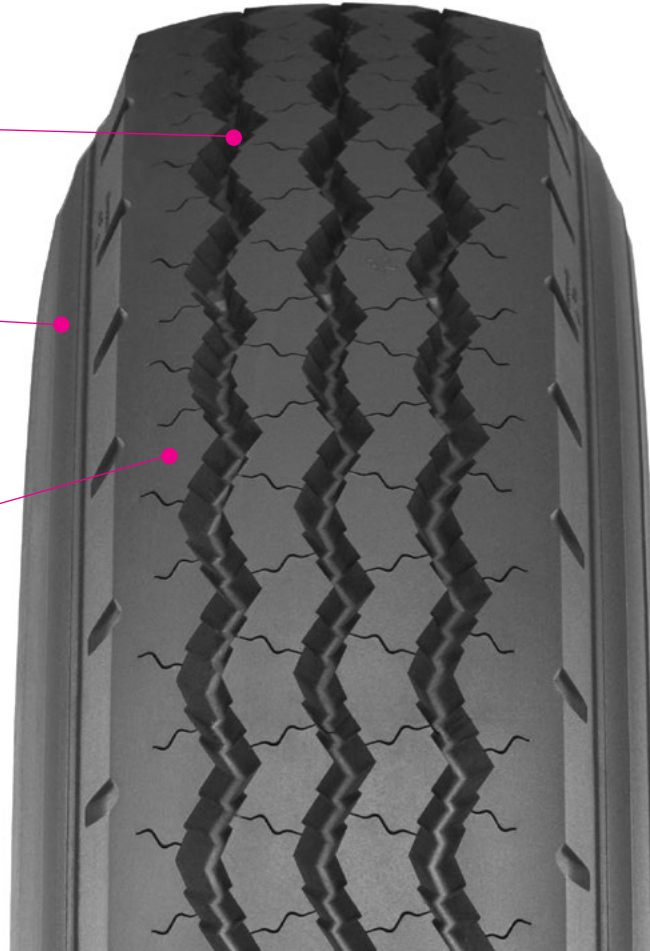
THE MICHELIN® XZA® 17.5 TIRE

All-position radial with proven versatility in regional and line haul applications.

Zigzag groove design for true all-position use.

Application specific compounding helps improve resistance to scrub and abrasion.

Massive shoulders and application specific compound help resist scrub and abrasion, extending tread life.



Size	Load Range	Catalog Number	Tread Depth 32nds	Max. Speed (*) mph	Loaded Radius		Overall Diameter		Overall Width (‡)		Approved Wheels (Measuring wheel listed first.)	Min. Dual Spacing (‡)		Revs Per Mile	Max. Load and Pressure Single				Max. Load and Pressure Dual			
					in.	mm	in.	mm	in.	mm		in	mm		lbs.	psi	kg.	kPa	lbs.	psi	kg.	kPa
10R17.5	G	05008	16	65	15.6	397	33.9	861	9.5	241	6.75, 7.50	11.1	282	615	4805	115	2180	790	4540	115	2060	790

Note: Wheel listed first is the measuring wheel.

(*) Exceeding the lawful speed limit is neither recommended nor endorsed.

(‡) Overall widths will change 0.1 inch (2.5 mm) for each 1/4 inch change in wheel width. Minimum dual spacing should be adjusted accordingly.

MICHELIN® tires and tubes are subject to a continuous development program. Michelin North America, Inc. reserves the right to change product specifications at any time without notice or obligations. MNA, Inc. continually updates its product information to reflect any changes in Industry Standards. Printed material may not reflect the current Load and Inflation information. Please visit www.michelintruck.com for the latest product information. The actual load and inflation pressure used must not exceed the wheel manufacturer's maximum conditions. Never exceed a wheel manufacturer's limits without permission from the component manufacturer.

 TO FIND OUT MORE
michelintruck.com

 FIND US ON FACEBOOK
michelintruck.com

 CONTACT US BY EMAIL
michelintruck.com/contact-us/

 CONTACT US BY TELEPHONE
1-888-622-2306