



LINE HAUL APPLICATIONS

THE MICHELIN® XTA®2 ENERGY TIRE

Fuel-efficient⁽¹⁾, small diameter trailer tire that helps deliver long, even tread wear in high cube line haul applications.

Line Haul	Regional	Urban	On/Off Road
<input checked="" type="checkbox"/> Recommended	<input type="checkbox"/> Acceptable	<input type="checkbox"/> Acceptable	<input type="checkbox"/> Acceptable



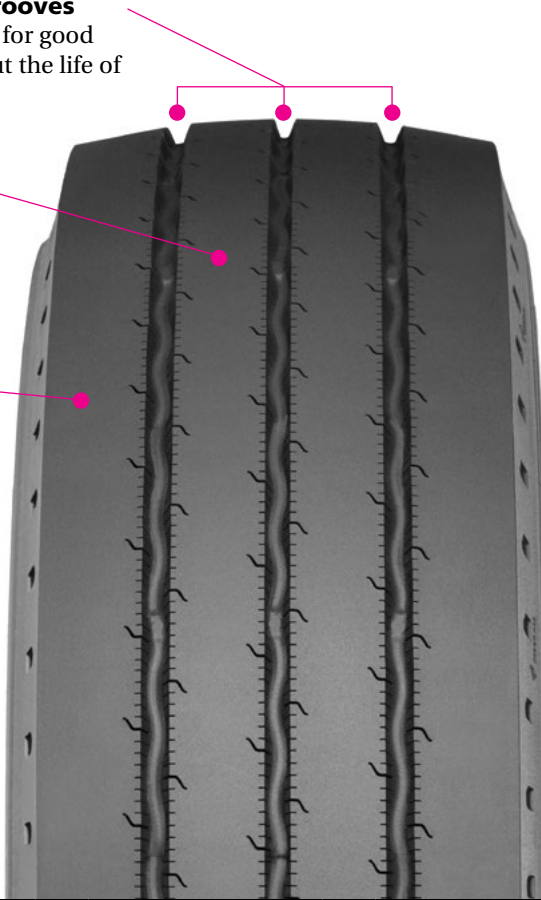
(1) Based on industry standard rolling resistance testing of comparable tires or retreads. Actual results may vary, and may be impacted by many factors, to include road conditions, weather and environment, driver performance, etc.

Fuel-efficient⁽¹⁾, small diameter trailer tire that helps deliver long, even tread wear in high cube in line haul applications.

See-through circumferential grooves promote efficient water evacuation for good wet braking and traction throughout the life of the tire.

Improved retreadability from a stronger, more durable crown package (compared to the MICHELIN® Energy XTA®).

Advanced technology compounds formulated to help provide low rolling resistance and cool operating temperatures.



Size	Load Range	Catalog Number	Tread Depth 32nds	Max. Speed (*)		Loaded Radius		Overall Diameter		Overall Width (‡)		Approved Wheels (Measuring wheel listed first.)	Min. Dual Spacing (‡)		Revs Per Mile	Max. Load and Pressure Single				Max. Load and Pressure Dual			
				mph	in.	mm	in.	mm	in.	mm	in.		mm	lbs.		psi	kg.	kPa	lbs.	psi	kg.	kPa	
245/70R17.5	J	78370	13	62	14.2	361	31.2	792	9.5	241	6.75, 7.50	10.6	270	670	6005	125	2725	860	5675	125	2575	860	

Note: Wheel listed first is the measuring wheel.

(1) Based on industry standard rolling resistance testing of comparable tires or retreads. Actual results may vary, and may be impacted by many factors, to include road conditions, weather and environment, driver performance, etc.

(*) Exceeding the lawful speed limit is neither recommended nor endorsed.

(‡) Overall widths will change 0.1 inch (2.5 mm) for each 1/4 inch change in wheel width. Minimum dual spacing should be adjusted accordingly.

MICHELIN® tires and tubes are subject to a continuous development program. Michelin North America, Inc. reserves the right to change product specifications at any time without notice or obligations. MNA, Inc. continually updates its product information to reflect any changes in Industry Standards. Printed material may not reflect the current Load and Inflation information. Please visit www.michelintruck.com for the latest product information. The actual load and inflation pressure used must not exceed the wheel manufacturer's maximum conditions. Never exceed a wheel manufacturer's limits without permission from the component manufacturer.