

MICHELIN® BIBLOAD® HARD SURFACE TIRE



NON-DIRECTIONAL STEEL-BELTED RADIAL TIRE

PROVEN CASING DURABILITY IN ALL APPLICATIONS

- Uses the same proven casing of the XMCL with added reinforcements in the shoulder area for protection.

PATENTED DIAMOND LUG PATTERN OFFERS MULTIPLE BITING EDGES FOR TRACTION

- Constant traction provided by two sections of lug that are always in contact with the surface.

SUPERIOR RIDE QUALITY

- Radial construction offers a comfortable ride in any condition.

IMPROVED LATERAL TRACTION AND GRIP VS STANDARD R4 TREAD DESIGN

- Offers a tread face with up to 30% more tread surface than a standard R4 tread pattern.



Backhoe Loaders



Compact Wheel Loaders



Telehandlers



MICHELIN® BIBLOAD® HARD SURFACE

OUTSTANDING PERFORMANCE ON HARD SURFACES

96 tread blocks and a large area of rubber in contact with the ground

- Smoother ride

Very deep tread pattern

- For prolonged use on tough surfaces
- Improved service life

Regular step by step grip

- Optimal drive



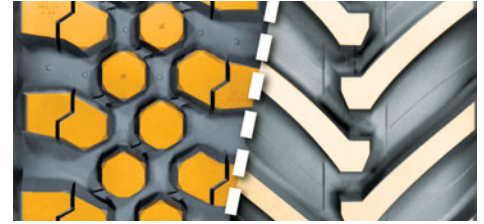
Multi-directional tread blocks

- Stability in all directions

Reinforced sidewalls

- Excellent resistance to damage

LARGER AREA IN CONTACT WITH HARD SURFACES



Diamond Tread Pattern
44%*

Bar Tread Pattern
29%*

* Source: Michelin Test and Research Center in Ladoux.

DIAMOND TREAD PATTERN – INNOVATIVE TECHNOLOGY



Resulting from research and tested in live conditions, the diamond tread pattern mainly consists of independent, bevelled blocks. It provides more contact with the road surface than a bar based tread pattern. More resistance to wear and tear and smooth ride.



Size	I.S.O. Index	Product Code	Equivalent Size	Max Inflation Pressure (psi)	Max Load (lbs)	Section Width (in)	Overall Dia. (in)	Rolling Circum. (in)	Tread Depth (32nds)
340/80R18	143A8/143B	66605	12.5/80R18	64	13,825	13.5	39	116	35
400/70R18	147A8/147B	09464	16.0/70R18	64	15,600	15.6	39.6	117.4	37
340/80R20	144A8/144B	23767	12.5/80R20	64	14,200	13.9	41	122	35
400/70R20	149A8/149B	18143	16.0/70R20	64	16,490	15.9	42	125	37
440/80R24	161A8/161B	23762	16.9R24	64	23,455	17.6	51.1	152	40
460/70R24	159A8/159B	27534	17.5R24	64	22,180	18.4	48.9	145.2	42
500/70R24	164A8/164B	19122	19.5R24	64	25,355	20.1	51.1	152.2	40
540/70R24	168A8/168B	34928	21R24	64	28,395	22.1	52.8	156.7	42
480/80R26	160A8/160B	46166	18.4R26	64	27,635	19.2	55.9	165.9	42
440/80R28	156A8/156B	49461	16.9R28	64	26,875	17.6	55.4	164.9	42



TO FIND OUT MORE
US: business.michelinman.com/agriculture
CA: agricultural.michelin.ca



FIND US ON FACEBOOK
@MichelinTruck



CONTACT US BY EMAIL
US: business.michelinman.com/contact-us
CA: agricultural.michelin.ca/caen/Contact-us



CONTACT US BY TELEPHONE
US: 1-888-622-2306
CA: 1-888-622-2306