



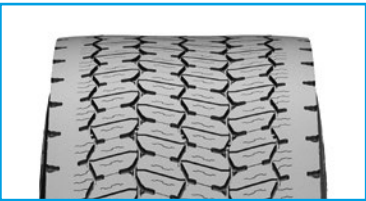
TREAD PATTERN DESIGNED FOR LONG LASTING GRIP<sup>(3)</sup>

Benefit from improved longevity potential with high level of security.

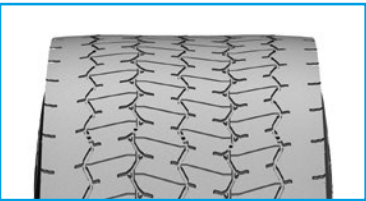
- on SNOW “high level of performance when New & 5 mm remaining tread depth”
- on WET “high level of performance when New & 2 mm remaining tread depth”



**WHEN NEW**  
The highly siped tread pattern of MICHELIN X® MULTI™ GRIP D allows improved traction, braking, lateral grip on snow & ice in comparison with previous range (MICHELIN XDW ICEGRIP).



**5 MM RTD**  
With more than twice as many additional sipes compared to the previous range, the MICHELIN X® MULTI™ GRIP improves the level of snow traction and snow braking and is still 3PMSF.



**2 MM RTD**  
Wet grip is ensured up right down to the last millimeters with a sea-land ratio on the MICHELIN X® MULTI™ GRIP D which is 49% better than the previous range.

TECHNICAL INFORMATION

		LOAD/SPEED INDEX		TIRE LABELLING					REGROOVING			WINTER MARKING	
Dimension	Tread Pattern	Load	Speed	RFID	RR	WG	Noise	dB	Original Tread Depth	Depth	Blade	3PMSF	M+S
385/55 R 22.5	MICHELIN X® MULTI™ GRIP Z	160	K		C	B	A	73	13.2 mm	3 mm	R3	Y	Y
385/65 R 22.5	MICHELIN X® MULTI™ GRIP Z	160	K		C	B	A	71	16 mm	3 mm	R3	Y	Y
315/70 R 22.5	MICHELIN X® MULTI™ GRIP D	154/150	L		D	C	B	74	17.3 mm	3 mm	R3	Y	Y
315/80 R 22.5	MICHELIN X® MULTI™ GRIP D	156/150	L		D	C	B	76	18.5 mm	3 mm	R3	Y	Y



REGENION

Self-regenerating tread blocks, supported by the 3D metal printing techniques for our molds, providing solid grip throughout the tire's lifetime in all conditions.

Available on all dimensions.



INFINICOIL

A continuous steel wire – which can be as long as 400 meters – wrapped around the tire to provide it with greater stability throughout its lifetime. On top of benchmark endurance, tires designed with INFINICOIL get you more mileage.

Available for 70 and 80 series.



POWERCOIL

A new generation of more robust steel cables offers better oxidation resistance and enhances casing endurance.

Available on all dimensions (2022 for 385/55 R 22.5 Z).



DURACOIL

A nylon fabric wrapped around the bead instead of rubber enhances the bead area stability and endurance. It allows a higher load index and improves retreadability.

Available for 65 and 80 series.

BRAKING, TRACTION, HANDLING, WHEN NEW AND WORN, TESTED AT MICHELIN TEST CENTER AT IVALO (FINLAND)



MICHELIN products are manufactured from high quality materials to high tolerances, ensuring a uniform and consistent performance. Correct application, fitting, inflation and regular inspection of the product are essential to its safe and efficient operation. Remix and the tire designations mentioned are trademarks of Michelin. For further information about any of the products in this document, contact your local Michelin representative.

**WEBSITE**  
trucks.michelin.eu

**MYPORTAL**  
myportal.michelingroup.com

**LINKEDIN**  
Michelin For Professional Businesses

**YOUTUBE**  
Michelin Trucks & Buses Tires Europe



Information correct at date of publication – 02/2021 – All Contents R.C.S. 495 289 399 – 20100389 – M.F.P. Michelin R.C.S. 855 200 507 Clermont-Fd – Share capital: 504 000 004 €



**I KEEP ON DRIVING  
MY BUSINESS**

**MICHELIN X® MULTI™ GRIP**  
SAFETY & MOBILITY IN SEVERE WINTER CONDITIONS





WITH THE MICHELIN X® MULTI™ GRIP TIRES, YOU KEEP FULL CONTROL IN SEVERE WINTER CONDITIONS RIGHT DOWN TO THE LAST MILLIMETERS OF TREAD AND CONTINUE TO DELIVER ON TIME.

- Excellent removal mileage thanks to increased longevity <sup>(1) (2)</sup> and long lasting grip
- Outstanding winter grip (snow and ice) even when worn <sup>(3)</sup>
- High wet grip even on the second part of tire life

DESIGNED FOR NATIONAL AND REGIONAL OPERATIONS



VIKTOR FAHLGREN, FAHLGRENS ÅKERI AB, 2021

**“THE GRIP IS GREAT. I FEEL SAFE WITH THESE TIRES”**

MICHELIN  
**X® MULTI™ GRIP Z**  
385/55 R 22.5



MICHELIN  
**X® MULTI™ GRIP Z**  
385/65 R 22.5



MICHELIN  
**X® MULTI™ GRIP D**  
315/70 R 22.5



MICHELIN  
**X® MULTI™ GRIP D**  
315/80 R 22.5



**Up to 10% of additional mileage<sup>(1)</sup>**  
**Antisplash on front tires, for safety and cleanliness**

**Up to 30% of additional mileage<sup>(2)</sup>**

Ivalo Test Center results <sup>(3)</sup>	Snow traction	Snow braking	Snow lateral grip	3PMSF
When new	+ 5%	+ 10%	iso	Yes
When worn (5 mm RTD)	+ 50%	+ 20%	+ 10%	Yes

<sup>(1)</sup> Internal calculations, 11/2020, comparing 385/55 R 22.5 and 385/65 R 22.5 MICHELIN X® MULTI™ GRIP Z to previous MICHELIN XFN2 range.  
<sup>(2)</sup> Internal calculations, 11/2020, comparing 315/70 R 22.5 and 315/80 R 22.5 MICHELIN X® MULTI™ GRIP D to previous MICHELIN XDW ICEGRIP range.  
<sup>(3)</sup> Internal studies performed at Michelin Test Center at Ivalo, Finland in Feb. 2020, between 385/65 R 22.5 MICHELIN X® MULTI™ GRIP Z and 315/80 R 22.5 MICHELIN X® MULTI™ GRIP D vs. 385/65 R 22.5 MICHELIN XFN2 AS and 315/80 R 22.5 MICHELIN XDW ICEGRIP, fitted on 4x2 rigid truck loaded at 10 tons.

