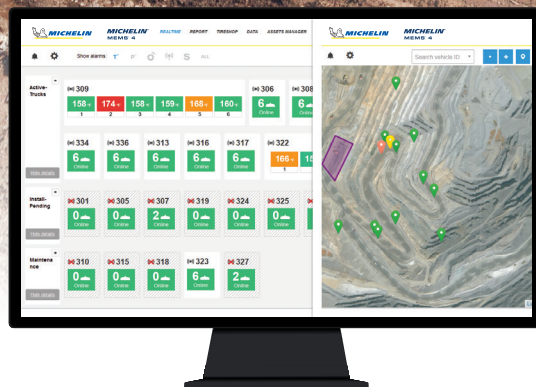


MICHELIN® / MEMS® 4

REAL-TIME CONNECTION, MAXIMUM PROTECTION



MICHELIN® MEMS® 4 is a powerful monitoring tool for tires and usage conditions.



MEET MEMS[®] 4

MICHELIN[®] MEMS[®] 4 combines downtime-fighting features, innovative equipment and seamless connectivity to increase profits and reduce downtime by protecting your equipment.

HOW MEMS[®] 4 WORKS:

SEAMLESS INTEGRATION



Monitor tire pressures and temperatures by serial number from cradle to grave with reliable, liquid-proof sensors mounted inside the tires.



Easily integrate with your current network and connect with popular Fleet Management Systems (FMS) like Modular, Wenco, and Hexagon Mining (Jigsaw).

INSTANT CONNECTIVITY



Real-time, user-friendly dashboards for dispatch and maintenance teams.



Alerts can also be received easily through text message and email.



KEY BENEFITS FOR YOUR MINE

MICHELIN® MEMS® 4 utilizes four key pillars to create real-time connection and maximum protection for your mine.



STRENGTHEN SAFETY

Perform remote pressure checks from any computer or connected device and utilize pressure and temperature alerts to prevent incidents and protect personnel.



INCREASE PRODUCTIVITY

Eliminate unnecessary stops: Keep your machine on the go with better downtime anticipation and fewer unscheduled maintenance stops.



SAVE ON BUDGET

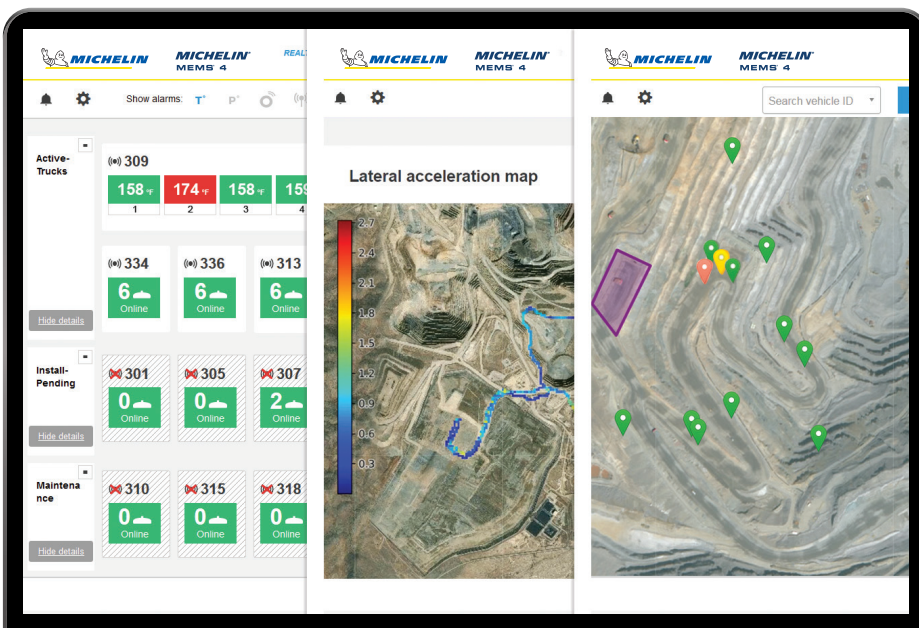
Save time and money: Check tire conditions from the control room to save resources, decrease downtime and increase tire life by reducing premature failures.



INCREASE TRUCK AVAILABILITY

Be prepared to service tires quickly and efficiently thanks to constant monitoring of pressure, temperature and geolocation of assets.

INNOVATIVE FEATURES



Track temperature and pressure alarms with user-friendly dashboard.



Monitor position, speeds and routes with GPS mapping and geofencing technology.



Analyze roads and curves and understand tire usage with GPS.



Seamless factory integration on select OEM models with more MICHELIN® MEMS®-ready models coming soon.



THE MICHELIN[®] MEMS[®] 4 SYSTEM

A Powerful Monitoring Tool for Tires and Usage Conditions

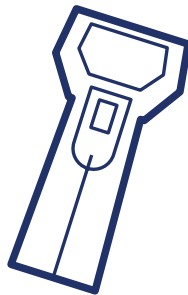
Downtime-fighting functions, innovative equipment and seamless connectivity combine for premium monitoring and protection for your tires and machines.

MINING EQUIPMENT FITTED WITH MICHELIN MEMS[®] 4 USES SENSORS TO COLLECT & SEND DATA.



- **PRESSURE**
- **TEMPERATURE**
- **GPS LOCATION AND SPEED**
- **LATERAL ACCELERATION**

LIVE DATA EMPOWERS DATA- DRIVEN DECISIONS IN THE FIELD.



CONNECTED
MOBILE DEVICE



OPTIONAL
IN-CAB DISPLAY

DATA IS ACCESSIBLE ON A **LOCAL OR CLOUD SERVER** THAT PROVIDES FOR SEAMLESS INTEGRATION WITH:



- **MINING DISPATCH SYSTEMS**
- **TIRE SHOP AND MAINTENANCE**
- **ENGINEERS AND PLANNERS**
- **MICHELIN SUPPORT**
- **HANDHELD DEVICES**

www.michelinearthmover.com

Copyright © 2020 Michelin North America, Inc. All rights reserved.
The Michelin Man is a registered trademark owned by Michelin North America, Inc.



MICHELIN