

MICHELIN AGRIBIB ROW CROP IF



20% deeper tread depth

- Excellent traction
- More rubber to wear out

The R1W* standard demands a deeper tread pattern by 20% than an equivalent R1 tyre

* TRA Standard (The Tyre and Rim Association, Inc.)

MICHELIN Ultraflex

- Less soil compaction throughout the tyre's entire life

"Improved Flexion" (IF) structure of an agricultural tractor drive wheel tyre in which the carcass has more load capacity than that of a corresponding standard tyre.

* ETRTO standard

New reinforced casing

- Modern Michelin Ultraflex design
- Improved load capacity thanks to a nominal pressure of 4 bars

(vs. 2.4 or 3.6 depending on the sizes)



High load capacity



Great soil protection



Good traction

Available sizes

351097 IF 320/85 R38 151A8/151B TL

125798 IF 320/90 R50 158A8/158B TL

120462 IF 380/90 R46 165A8/165B TL

212359 IF 380/90 R50 167A8/167B TL

467712 IF 320/90 R54 159A8/159B TL

Michelin recommendations

Machine n° 1

FRONT PRESSURE (bars / psi)

REAR PRESSURE (bars / psi)

Machine n° 2

FRONT PRESSURE (bars / psi)

REAR PRESSURE (bars / psi)



MICHELIN AGRIBIB ROW CROP IF



Even more benefits for row crop work



MICHELIN AGRIBIB ROW CROP IF



Tyre specifications and pressure table. Load per tyre in kg.

Ø INCHES	DESCRIPTION	CAI	e (mm)	D (mm)	R' (mm)	RC (mm)	Recommended rim	Acceptable rims	Tube (code)	75% internal volume (litres)	Tread depth (mm)				
38	AGRIBIB ROW CROP IF 320/85 R38 151A8/151B TL	351097	330	1506	697	4496	DW11A	DW10A W10 W11	779	169	41				
Bar (Psi)	1.20 (17) 1.40 (20) 1.60 (23) 1.80 (26) 2.00 (29) 2.20 (32) 2.40 (35) 2.60 (38) 2.80 (41) 3.00 (44) 3.20 (46) 3.40 (49) 3.60 (52) 3.80 (55) 4.00 (58)														
10 km/h	2025	2250	2475	2590	2700	2790	2875	3015	3150	3275	3400	3515	3625	3715	3800
20 km/h	1975	2200	2425	2540	2650	2740	2825	2965	3100	3225	3350	3465	3575	3650	3725
30 km/h	1900	2115	2325	2440	2550	2640	2725	2850	2975	3100	3225	3325	3425	3515	3600
50 km/h	1825	2040	2250	2350	2450	2540	2625	2750	2875	2990	3100	3200	3300	3375	3450

Ø INCHES	DESCRIPTION	CAI	e (mm)	D (mm)	R' (mm)	RC (mm)	Recommended rim	Acceptable rims	Tube (code)	75% internal volume (litres)	Tread depth (mm)				
46	AGRIBIB ROW CROP IF 380/90 R46 165A8/165B TL	120462	382	1844	852	5513	DW13A	DW12A DW13 W12 W12A W13 W13A	835	308	48				
Bar (Psi)	1.20 (17) 1.40 (20) 1.60 (23) 1.80 (26) 2.00 (29) 2.20 (32) 2.40 (35) 2.60 (38) 2.80 (41) 3.00 (44) 3.20 (46) 3.40 (49) 3.60 (52) 3.80 (55) 4.00 (58)														
10 km/h	3000	3340	3675	3850	4025	4150	4275	4475	4675	4890	5100	5240	5375	5525	5675
20 km/h	2950	3290	3625	3790	3950	4065	4175	4390	4600	4800	5000	5140	5275	5415	5550
30 km/h	2825	3150	3475	3640	3800	3915	4025	4225	4425	4615	4800	4940	5075	5215	5350
50 km/h	2725	3040	3350	3500	3650	3765	3875	4065	4250	4440	4625	4750	4875	5015	5150

Ø INCHES	DESCRIPTION	CAI	e (mm)	D (mm)	R' (mm)	RC (mm)	Recommended rim	Acceptable rims	Tube (code)	75% internal volume (litres)	Tread depth (mm)				
50	AGRIBIB ROW CROP IF 320/90 R50 158A8/158B TL	125798	322	1849	865	5544	DW11	DW10A W10 W10A W11	816	225	42				
Bar (Psi)	1.20 (17) 1.40 (20) 1.60 (23) 1.80 (26) 2.00 (29) 2.20 (32) 2.40 (35) 2.60 (38) 2.80 (41) 3.00 (44) 3.20 (46) 3.40 (49) 3.60 (52) 3.80 (55) 4.00 (58)														
10 km/h	2450	2725	3000	3140	3275	3390	3500	3665	3825	3975	4125	4265	4400	4540	4675
20 km/h	2400	2665	2925	3075	3225	3325	3425	3590	3750	3900	4050	4190	4325	4465	4600
30 km/h	2300	2565	2825	2965	3100	3200	3300	3465	3625	3765	3900	4025	4150	4290	4425
50 km/h	2225	2475	2725	2850	2975	3075	3175	3325	3475	3615	3750	3875	4000	4125	4250

IMPORTANT:
The inflation pressure is always determined according to the load per tyre, speed and work to be carried out and according to the legislation in force in the country.
10, 25 and 30 km/h Cyc: Work with cyclic load, field use only.
25, 30 and 50 km/h: use on the road up to 25, 30 and 50 km/h.

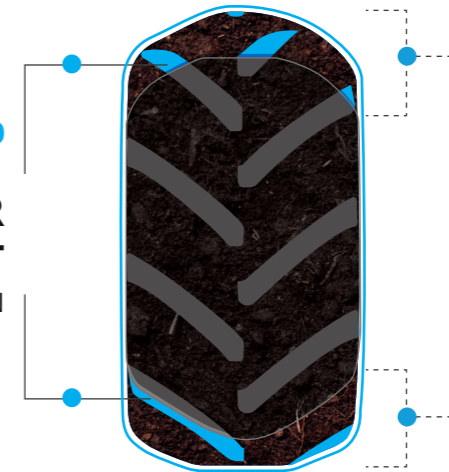
Tyre specifications and pressure table. Load per tyre in kg.

Ø INCHES	DESCRIPTION	CAI	e (mm)	D (mm)	R' (mm)	RC (mm)	Recommended rim	Acceptable rims	Tube (code)	75% internal volume (litres)	Tread depth (mm)				
50	AGRIBIB ROW CROP IF 380/90 R50 167A8/167B TL	212359	395	1953	903	5841	DW13A	DW12A W12A W13A		329	47				
Bar (Psi)	1.20 (17) 1.40 (20) 1.60 (23) 1.80 (26) 2.00 (29) 2.20 (32) 2.40 (35) 2.60 (38) 2.80 (41) 3.00 (44) 3.20 (46) 3.40 (49) 3.60 (52) 3.80 (55) 4.00 (58)														
10 km/h	3200	3500	3800	4040	4275	4415	4550	4750	4950	5165	5375	5525	5675	5840	6000
20 km/h	3125	3425	3725	3950	4175	4315	4450	4650	4850	5065	5275	5415	5550	5715	5875
30 km/h	3025	3315	3600	3815	4025	4165	4300	4490	4675	4875	5075	5215	5350	5515	5675
50 km/h	2900	3175	3450	3665	3875	4000	4125	4315	4500	4690	4875	5015	5150	5300	5450

Ø INCHES	DESCRIPTION	CAI	e (mm)	D (mm)	R' (mm)	RC (mm)	Recommended rim	Acceptable rims	Tube (code)	75% internal volume (litres)	Tread depth (mm)				
54	AGRIBIB ROW CROP IF 320/90 R54 159A8/159B TL	467712	322	1949	915	5848	DW11	DW10 W10 W11	816	240	42				
Bar (Psi)	1.20 (17) 1.40 (20) 1.60 (23) 1.80 (26) 2.00 (29) 2.20 (32) 2.40 (35) 2.60 (38) 2.80 (41) 3.00 (44) 3.20 (46) 3.40 (49) 3.60 (52) 3.80 (55) 4.00 (58)														
10 km/h	2550	2840	3125	3275	3425	3540	3650	3825	4000	4150	4300	4450	4600	4715	4825
20 km/h	2500	2775	3050	3200	3350	3465	3575	3750	3925	4075	4225	4365	4500	4615	4725
30 km/h	2400	2675	2950	3090	3225	3340	3450	3615	3775	3925	4075	4215	4350	4450	4550
50 km/h	2325	2575	2825	2965	3100	3215	3325	3475	3625	3775	3925	4050	4175	4275	4375

ON THE GROUND,
MICHELIN AGRIBIB ROW CROP IF* OFFERS...

+14%
GREATER LUG CONTACT
FOR BETTER TRACTION



+20%
BIGGER FOOTPRINT
TO BETTER DISTRIBUTE THE LOAD,
CAUSING LESS SOIL COMPACTION



* vs AGRIBIB ROW CROP normal flex
Compared in Ladoux (France) in September 2020 on size 380/90 R50.
Load of 3600 kilos (30 km/h condition).

