



REGIONAL APPLICATIONS

THE MICHELIN® X ONE® MULTI ENERGY T PRE-MOLD RETREAD



MICHELIN RETREAD TECHNOLOGIES

A SmartWay® verified trailer position retread which ensures the right balance of outstanding removal mileage, reduced irregular wear and fuel efficiency, optimized for regional applications.

Line Haul	Regional	Urban	On/Off Road
<input checked="" type="checkbox"/> Recommended	<input checked="" type="checkbox"/> Recommended	<input type="checkbox"/> Acceptable	<input type="checkbox"/> Acceptable

BENEFITS:



Outstanding Mileage

Excellent removal mileage

- **Tread Depth**

Full 15/32nds of tread depth

Durability

Long life

- **Winged Tread**

Provides maximum shoulder adhesion

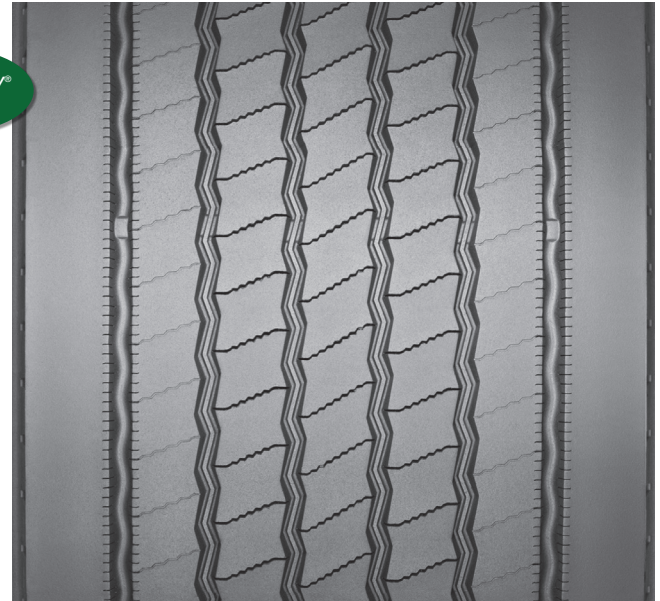
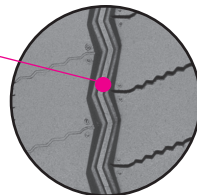
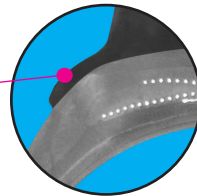
- **Waved Groove Bottoms**

Help prevent stone drilling

Irregular Wear Reduction

- **Optimized Architecture**

Microsipes and a solid shoulder help resist irregular wear



Tread Size	Metric	375/425 ⁽¹⁾	385/435 ⁽¹⁾
Tread Depth	Metric	12 mm	12 mm
	Inches	15/32"	15/32"

SmartWay® Fuel Efficiency^(2,3)

Improved Fuel Efficiency⁽⁴⁾

- **Advanced Technology Compounds**

Designed to deliver low rolling resistance with excellent mileage

(1) Tread widths with two measurements have wings. The first number is tread base width in mm. The second is the overall width, wing tip to tip.
 (2) Based on internal tests against SmartWay® requirements. For more information on SmartWay® verified technologies, go to US: www.epa.gov/smartway or CA: <https://www.nrcan.gc.ca>.
 (3) Based on industry standard rolling resistance testing of comparable tires & retreads. Actual results may vary, and may be impacted by many factors, to include road conditions, weather and environment, driver performance, etc.
 (4) Versus MICHELIN® X ONE® XTE® Pre-Mold Retread.

TO FIND OUT MORE
 US: business.michelinman.com
 CA: michelintruck.com/en_CA

FIND US ON FACEBOOK
[michelintruck](https://www.facebook.com/michelintruck)

VISIT US ON THE WEB
 US: business.michelinman.com/contact-us
 CA: michelintruck.com/en_CA/contact-us

CONTACT US BY TELEPHONE
 US: 1-888-622-2306
 CA: 1-888-622-2306

Michelin North America Inc., One Parkway South, Greenville, SC 29615
 Michelin North America (Canada) Inc., 2500 Daniel Johnson Blvd., Suite 500, Laval (QC) H7T 2P6
 Copyright © 2021 MNA(C)I. All rights reserved.
 Copyright © 2021 Michelin North America, Inc. All rights reserved. An Equal Opportunity Employer PDF Only (07/21)

business.michelinman.com



MICHELIN