



LINE HAUL APPLICATIONS

# THE MICHELIN® X ONE® XTA CUSTOM MOLD RETREAD



The MICHELIN® X ONE® XTA® Custom Mold Retread is a trailer position retread optimized to promote stability and resistance to uneven wear in new generation wide-based singles in line haul applications.

Line Haul	Regional	Urban	On/Off Road
<input checked="" type="checkbox"/> Recommended	<input type="checkbox"/> Acceptable		

## BENEFITS:

### Fuel Efficient Operation<sup>(1)</sup> –

Low rolling resistance

- **Unique fuel efficient Advanced Technology compound**

### Excellent Traction –

Optimized tread design for stability and uneven wear

- **13/32nds tread depth**

### Enhanced Tread Life –

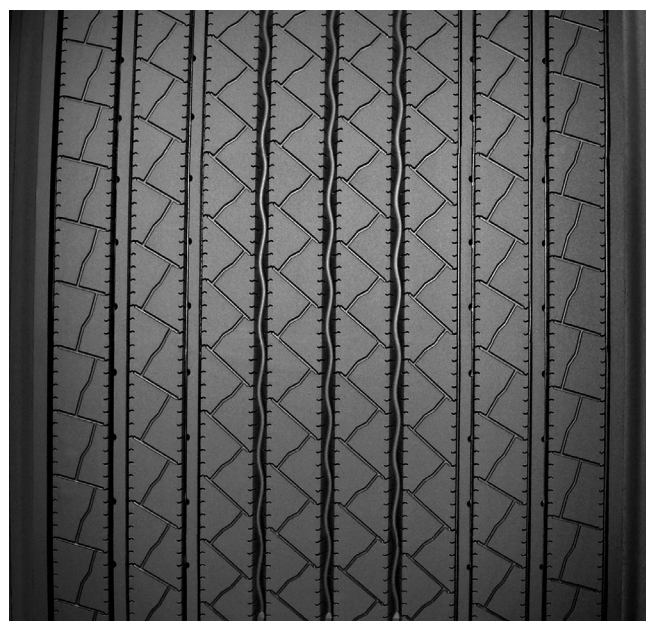
Long service life

- **Unique decoupling ribs**

### Max Secured Tread –

Winged tread

- **Provides maximum tread-to-shoulder adhesion in high scrub applications.**



Also available as a Pre-Mold Retread.

Casing Size	Tread Depth
445/505R22.5	13/32"

(1) Fuel savings are estimates based on comparative rolling resistance. Actual on-road savings may vary.

 TO FIND OUT MORE  
US: [business.michelinman.com](http://business.michelinman.com)  
CA: [michelintruck.com/en\\_CA](http://michelintruck.com/en_CA)

 FIND US ON FACEBOOK  
[michelintruck](https://www.facebook.com/michelintruck)

 VISIT US ON THE WEB  
US: [business.michelinman.com/contact-us](http://business.michelinman.com/contact-us)  
CA: [michelintruck.com/en\\_CA/contact-us](http://michelintruck.com/en_CA/contact-us)

 CONTACT US BY TELEPHONE  
US: 1-888-622-2306  
CA: 1-888-622-2306

Michelin North America Inc., One Parkway South, Greenville, SC 29615  
Michelin North America (Canada) Inc., 2500 Daniel Johnson Blvd., Suite 500, Laval (QC) H7T 2P6  
Copyright © 2021 MNA(C)I. All rights reserved.  
Copyright © 2021 Michelin North America, Inc. All rights reserved. An Equal Opportunity Employer PDF Only (07/21)

[business.michelinman.com](http://business.michelinman.com)

