



URBAN APPLICATIONS

THE MICHELIN® X ONE® XZU®S + PRE-MOLD RETREAD



MICHELIN RETREAD TECHNOLOGIES

The MICHELIN® X ONE® XZU®S+ Pre-Mold Retread is an industry leading, all position, next generation wide-base single, designed with 50% greater wear life⁽¹⁾ and durability for demanding urban applications.

Line Haul	Regional	Urban	On/Off Road
<input checked="" type="checkbox"/> Recommended	<input type="checkbox"/> Acceptable		

BENEFITS:

50% Greater Wear Life⁽¹⁾ –

Long wear

- **Optimized rib tread design**
- **Deep 29/32nds tread depth**

Enhanced Durability –

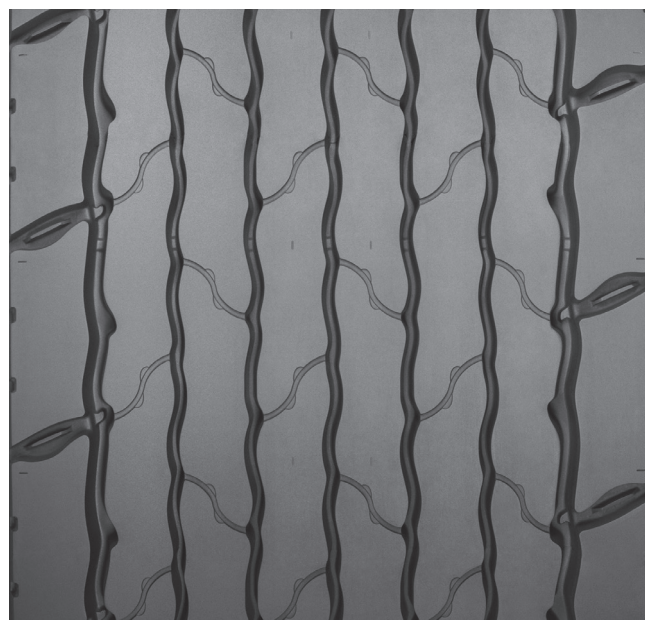
Minimizes casing temperature

- **Co-Ex technology, unique two layer compound**

Maximum Secured Tread –

Winged tread

- **Provides maximum tread-to-shoulder adhesion in high scrub applications**



(1) Vs. MICHELIN® X ONE® XZU®S Pre-Mold™ Retread.

(2) Tread widths with two measurements have wings. The first number is tread base width in mm. The second number is the overall width, wing tip to tip.

Used in intermittent highway service with maximum speed of 65 mph.

Tread Size	Metric	385/435 ⁽²⁾
Tread Depth	Metric	23 mm
	Inches	29/32"

TO FIND OUT MORE
US: business.michelinman.com
CA: michelintruck.com/en_CA

FIND US ON FACEBOOK
[michelintruck](https://www.facebook.com/michelintruck)

VISIT US ON THE WEB
US: business.michelinman.com/contact-us
CA: michelintruck.com/en_CA/contact-us

CONTACT US BY TELEPHONE
US: 1-888-622-2306
CA: 1-888-622-2306

Michelin North America Inc., One Parkway South, Greenville, SC 29615
Michelin North America (Canada) Inc., 2500 Daniel Johnson Blvd., Suite 500, Laval (QC) H7T 2P6
Copyright © 2021 MNA(C). All rights reserved.
Copyright © 2021 Michelin North America, Inc. All rights reserved. An Equal Opportunity Employer PDF Only (07/21)

business.michelinman.com
www.michelinman.com/fr_CA

