



OFF ROAD APPLICATIONS

# THE MICHELIN® XDY-EX™ PRE-MOLD RETREAD



The MICHELIN® XDY-EX Pre-Mold Retread delivers exceptional durability and traction in demanding off-road applications.

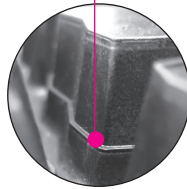
|                                      |                                     |                                     |   |
|--------------------------------------|-------------------------------------|-------------------------------------|---|
| Line Haul                            | Regional                            | Urban                               | <b>On/Off Road</b>                              |
| <input type="checkbox"/> Recommended | <input type="checkbox"/> Acceptable | <input type="checkbox"/> Acceptable | <input checked="" type="checkbox"/> Recommended |

## BENEFITS:

### Long Tread Life

More up-time

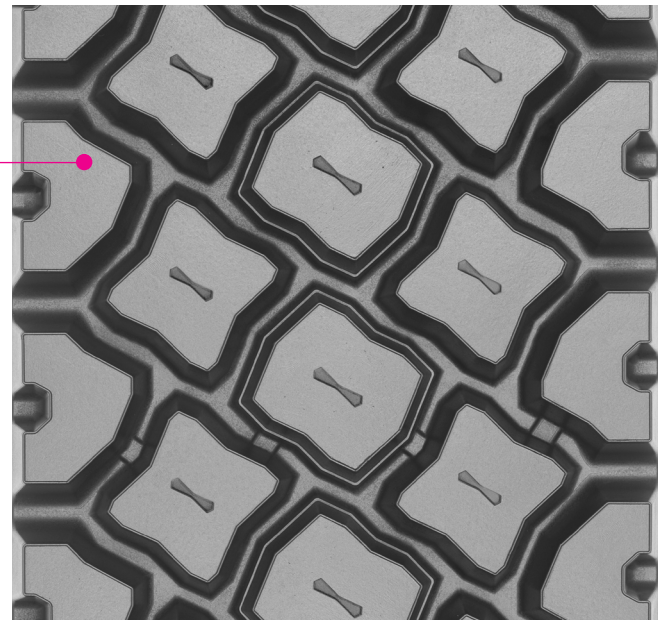
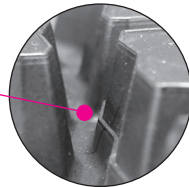
- **Proprietary Compound Technology**  
Delivers exceptional wear resistance wear properties
- **Stone Ejector Ledges**  
Placed on the sides of the tread grooves, they reduce stone retention
- **Deep 32/32nd Tread**



### Driver Confidence

Excellent traction

- **Optimized sculpture**  
The raised block sculpture is specifically designed to deliver exceptional traction in demanding off-road applications
- **Deep Tread**



|             |        |        |     |     |
|-------------|--------|--------|-----|-----|
| Tread Size  | Metric | 220    | 230 | 240 |
| Tread Depth | Metric | 25 mm  |     |     |
|             | Inches | 32/32" |     |     |

 TO FIND OUT MORE  
US: [business.michelinman.com](http://business.michelinman.com)  
CA: [michelintruck.com/en\\_CA](http://michelintruck.com/en_CA)

 FIND US ON FACEBOOK  
[michelintruck](https://www.facebook.com/michelintruck)

 VISIT US ON THE WEB  
US: [business.michelinman.com/contact-us](http://business.michelinman.com/contact-us)  
CA: [michelintruck.com/en\\_CA/contact-us](http://michelintruck.com/en_CA/contact-us)

 CONTACT US BY TELEPHONE  
US: 1-888-622-2306  
CA: 1-888-622-2306

Michelin North America Inc., One Parkway South, Greenville, SC 29615  
Michelin North America (Canada) Inc., 2500 Daniel Johnson Blvd., Suite 500, Laval (QC) H7T 2P6  
Copyright © 2021 MNA(C). All rights reserved.  
Copyright © 2021 Michelin North America, Inc. All rights reserved. An Equal Opportunity Employer PDF Only (07/21)

[business.michelinman.com](http://business.michelinman.com)

