



URBAN APPLICATIONS

THE MICHELIN[®] X[®] INCITY Z SL TIRE

An all-position tire designed for the challenges of urban transit operations. This is a Single Life tire that offers optimized mileage and durability.

Line Haul	Regional	Urban	On/Off Road
<input type="checkbox"/>	<input type="checkbox"/>	<input checked="" type="checkbox"/>	<input type="checkbox"/>

Recommended Acceptable



business.michelintruck.com



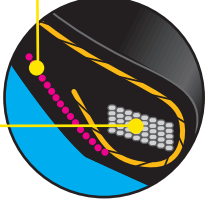
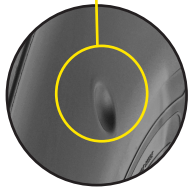
MICHELIN

THE MICHELIN® X® INCITY Z SL TIRE

Durable and Dependable

Designed to withstand tough conditions

- **Extra Thick Sidewalls**
Strong protection against shocks, impacts and curb scrub
- **Full Width Elastic Protector Ply**
Michelin exclusive
- **Sidewall Wear Indicators**
Promote timely tire rotation for long casing life and enhanced retreadability
- **Extended Metallic Chafer**
Dissipates heat in bead area
- **Optimized Bead Architecture**
Designed to improve bead durability

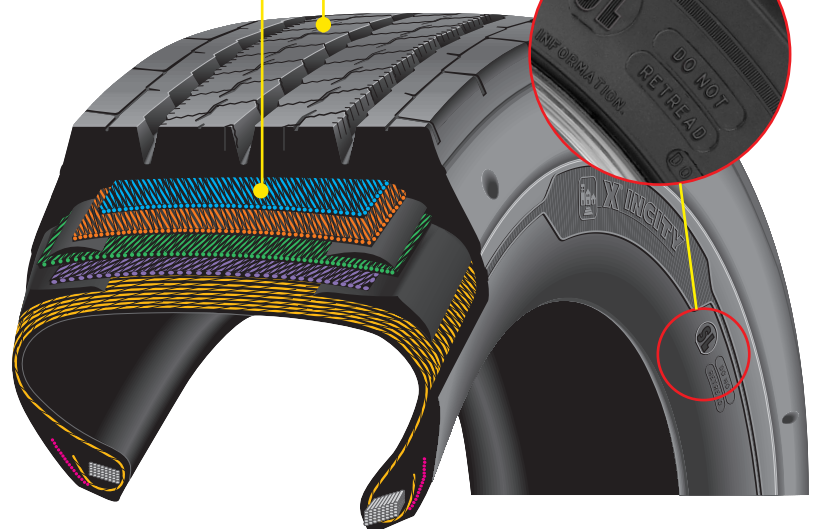


Optimized Tread Life

Longer tread life

- **Scrub Resistant Compound**
Fights treadwear
- **Wear Resistant Tread Pattern**
Optimized for urban bus conditions and for the reduction of irregular wear⁽¹⁾
- **Wide Footprint**
Distributes force for longer tread life

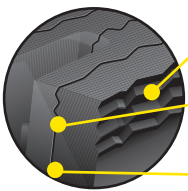
**SL (Single Life)
DO NOT RETREAD**



Driver Confidence

Outstanding traction with Matrix Siping

- **Matrix Sipes**
Provide inter-locking action which offers excellent traction and even wear
- **Zig-Zag Groove Walls**
Provide optimized biting edges and excellent water and snow evacuation
- **Full Depth Sipes**
Provide excellent traction throughout the life of the tread



Outstanding Fuel Efficiency

Low rolling resistance without compromising tread life

- **Optimized Design**
Compounds and tread pattern combine to deliver outstanding fuel efficiency and mileage for urban applications

Size	Load Range	Catalog Number	Tread Depth		Max. Speed (*)		Loaded Radius		Overall Diameter		Overall Width (‡)		Approved Wheels (Measuring wheel listed first)		Min. Dual Spacing (‡)		Revs Per Mile	Max. Load and Pressure Single				Max. Load and Pressure Dual			
			32nds	mm	mph	kph	in.	mm	in.	mm	in.	mm	in.	mm	in.	mm		lbs.	psi	kg.	kPa	lbs.	psi	kg.	kPa
305/85R22.5 ⁽²⁾	J	62156	24	618	68	110	20.0	507	42.7	1085	11.7	298	9.00, 8.25	13.2	335	485	7830	120	3550	830	7160	120	3250	830	

Note: Wheel listed first is the measuring wheel.

(1) Urban Transit buses fitted with 12R22.5 or 305/85R22.5 dimensions should only use the MICHELIN® X® INCITY Z and X® INCITY Z SL tires.

(2) "No bus shall be operated with regrooved, recapped or retreaded tires on the front wheels." US Code of Federal Regulations: Title 49, Transportation; Part 393.75.

(*) Exceeding the lawful speed limit is neither recommended nor endorsed.

(‡) Overall widths will change 0.1 inch (2.5 mm) for each 1/4 inch change in wheel width. Minimum dual spacing should be adjusted accordingly.

MICHELIN® tires and tubes are subject to a continuous development program. Michelin North America, Inc. reserves the right to change product specifications at any time without notice or obligations.

MNA, Inc. continually updates its product information to reflect any changes in Industry Standards. Printed material may not reflect the current Load and Inflation information. Please visit www.michelintruck.com for the latest product information. The actual load and inflation pressure used must not exceed the wheel manufacturer's maximum conditions. Never exceed a wheel manufacturer's limits without permission from the component manufacturer.

TO FIND OUT MORE
US: business.michelinman.com
CA: michelintruck.com/en_CA

FIND US ON FACEBOOK
[michelintruck](https://www.facebook.com/michelintruck)

CONTACT US BY EMAIL
US: business.michelinman.com/contact-us
CA: michelintruck.com/en_CA/contact-us

CONTACT US BY TELEPHONE
US: 1-888-622-2306
CA: 1-888-622-2306