



LINE HAUL APPLICATIONS

THE MICHELIN® X® LINE ENERGY D TIRE

SmartWay® verified fuel economy with leading tread life and traction in an energy drive tire for line haul applications.

Line Haul	Regional	Urban	On/Off Road
Recommended	Acceptable		



7 Year

7 YEAR 700,000-MILE
3-RETREAD LIMITED WARRANTY⁽¹⁾

⁽¹⁾ 7/7/3 Manufacturer's Limited Casing Warranty: 7 Year or 700,000 Mile or 3-Retread Limited Warranty for MICHELIN® X® LINE ENERGY D tire when retreaded by an authorized Michelin Retread Technologies (MRT) Dealer only. See limited warranty for details.

business.michelinman.com



MICHELIN

THE MICHELIN® X® LINE ENERGY D TIRE

SmartWay® verified fuel economy with leading tread life and traction in an energy drive tire for line haul applications.



Fuel Efficiency⁽¹⁾ –

Fuel economy with wear resistance

• Dual Energy Compound Tread

Fuel and Mileage Layer

– Precisely balanced tread compound delivers fuel efficiency as well as exceptional wear properties (Top Layer).

Fuel and Durability Layer

– Cool running tread rubber minimizes internal casing temperatures for low rolling resistance and extended casing life (Bottom Layer).

20% Longer Tread Life⁽²⁾ –

More miles

• Dual Energy Compound Tread

Top layer improves wear resistance.

• Wider footprint⁽²⁾ and solid shoulder

Distributes force for reduced wear.

• Matrix siping

Provides inter-locking action which offers excellent traction and even wear.

Driver Confidence –

Outstanding traction with Matrix siping

• **Matrix siping** provides inter-locking action which offers excellent traction and even wear.

• **Zig-Zag groove walls** provide optimized biting edges and excellent water and snow evacuation.

• **Full depth sipes** provide excellent traction throughout the life of the tread.

Maximum Retreadability –

3-Retread Limited Warranty⁽³⁾

Fight casing fatigue:

• **Enhanced Inner Liner**

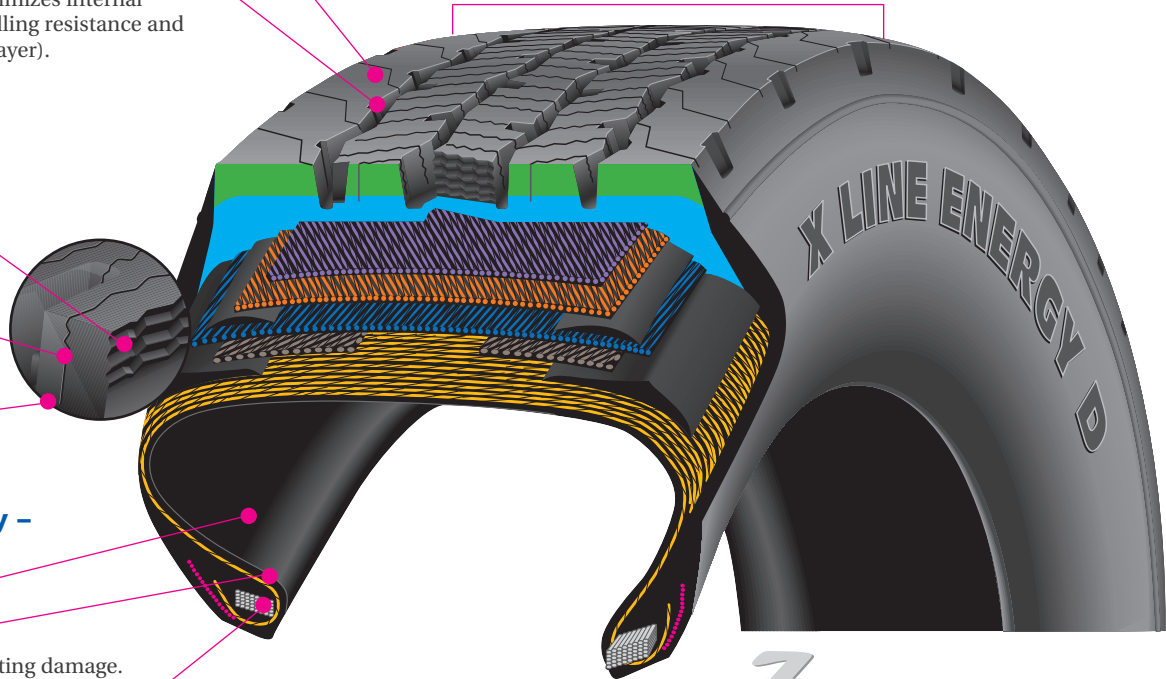
Delivers extra durability.

• **Robust Bead Area**

Reduced mounting and demounting damage.

• **Rectangular Bead Bundle**

A Michelin exclusive - simulates a solid steel rod “strapping” the tire onto the wheel. This design stabilizes the entire bead region and minimizes fatigue in order to extend casing life.



7 Year 7 YEAR or 700,000 MILE or 3-RETREAD LIMITED WARRANTY⁽³⁾

Size	Load Range	Catalog Number	Tread Depth	Max. Speed (*)		Loaded Radius		Overall Diameter		Overall Width (‡)		Approved Wheels (Measuring wheel listed first.)	Min. Dual Spacing (‡)		Revs Per Mile	Max. Load and Pressure Single				Max. Load and Pressure Dual			
				32nds	mph	kph	in.	mm	in.	mm	in.		mm	in.		mm	in.	mm	lbs.	psi	kg.	kPa	lbs.
11R22.5	G	35887	23	75	120	19.4	493	41.3	1050	11.2	286	8.25, 7.50	12.5	318	500	6175	105	2800	720	5840	105	2650	720
275/80R22.5	G	36859	23	75	120	18.9	480	40.2	1020	11.0	280	8.25, 7.50	12.2	311	514	6175	110	2800	760	5675	110	2575	760
275/80R24.5	G	36992	23	75	120	19.5	494	41.3	1050	10.8	275	8.25, 7.50	12.2	311	499	6175	110	2800	760	5675	110	2575	760

Note: Wheel listed first is the measuring wheel.

(1) Based on industry standard rolling resistance testing of comparable tires or retreads. Actual results may vary, and may be impacted by many factors, to include road conditions, weather and environment, driver performance, etc.

(2) Compared to the MICHELIN® XDA® ENERGY tire.

(3) 7/7/3 Manufacturer's Limited Casing Warranty: 7 Year or 700,000 Mile or 3-Retread Limited Warranty for MICHELIN® X® LINE ENERGY D tire when retreaded by an authorized Michelin Retread Technologies (MRT) Dealer only. See limited warranty for details.

(*) Exceeding the lawful speed limit is neither recommended nor endorsed.

(‡) Overall widths will change 0.1 inch (2.5 mm) for each 1/4 inch change in wheel width. Minimum dual spacing should be adjusted accordingly.

MICHELIN® tires and tubes are subject to a continuous development program. Michelin North America, Inc. reserves the right to change product specifications at any time without notice or obligations.

MNA, Inc. continually updates its product information to reflect any changes in Industry Standards. Printed material may not reflect the current Load and Inflation information. Please visit business.michelinman.com for the latest product information. The actual load and inflation pressure used must not exceed the wheel manufacturer's maximum conditions. Never exceed a wheel manufacturer's limits without permission from the component manufacturer.

TO FIND OUT MORE
US: business.michelinman.com
CA: michelintruck.com/en_CA

FIND US ON FACEBOOK
[michelintruck](https://www.facebook.com/michelintruck)

VISIT US ON THE WEB
US: business.michelinman.com/contact-us
CA: michelintruck.com/en_CA/contact-us

CONTACT US BY TELEPHONE
US: 1-888-622-2306
CA: 1-888-622-2306