



REGIONAL APPLICATIONS

THE MICHELIN® X ONE® MULTI ENERGY T TIRE

Breakthrough Advanced Casing Technology delivers significant reduction in irregular wear⁽¹⁾ and improved fuel economy⁽²⁾ to Michelin's latest wide base single tire for regional operations.

Line Haul	Regional	Urban	On/Off Road
Recommended	Recommended	Acceptable	Acceptable

Recommended Acceptable



1. Versus MICHELIN® X ONE® XTE® tire in field testing and observation.
2. Improvement based on comparison vs MICHELIN® X One® XTE® tire rolling resistance. Rolling resistance data is determined using drum tests according to ISO 28580 procedures. For more information, see your Michelin Truck Representative. Actual results may vary, and may be impacted by many factors, to include road conditions, weather and environment, driver performance, etc.

business.michelinman.com



MICHELIN

THE MICHELIN® X ONE® MULTI ENERGY T TIRE

Breakthrough Advanced Casing Technology delivers significant reduction in irregular wear⁽¹⁾ and improved fuel economy⁽²⁾ to Michelin's latest wide base single tire for regional operations.



Reduced Irregular Wear

Significant improvement in reducing irregular wear⁽¹⁾

• Advanced Casing Technology

Unique, design changes the casing shape to reduce irregular wear

• Optimized Architecture

Directional microsipes and solid shoulder help resist irregular wear

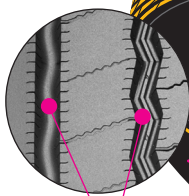
• Dual Compound Tread

– **Mileage Layer** – controls tread stiffness and stress to reduce irregular wear (Top Layer)

– **Ultra-Fuel-Efficiency and Retreadability Layer** – minimizes internal casing temperatures for low rolling resistance and extended casing life (Bottom Layer)

• Infini-Coil® Technology

Wide Infini-Coil® delivers consistent footprint for improved removal mileage



Extended Casing Life

Long life and retreadability

• Waved Groove Bottoms and Stone Ejectors

Help defend against stone drilling

• Rectangular Bead Bundle

Michelin exclusive. Reduces heat and fatigue.

• Full-width Elastic Protector Ply

Michelin exclusive. Increased protection against punctures.

Leading Smartway® Fuel Efficiency⁽²⁾

• Advanced Technology Compounds

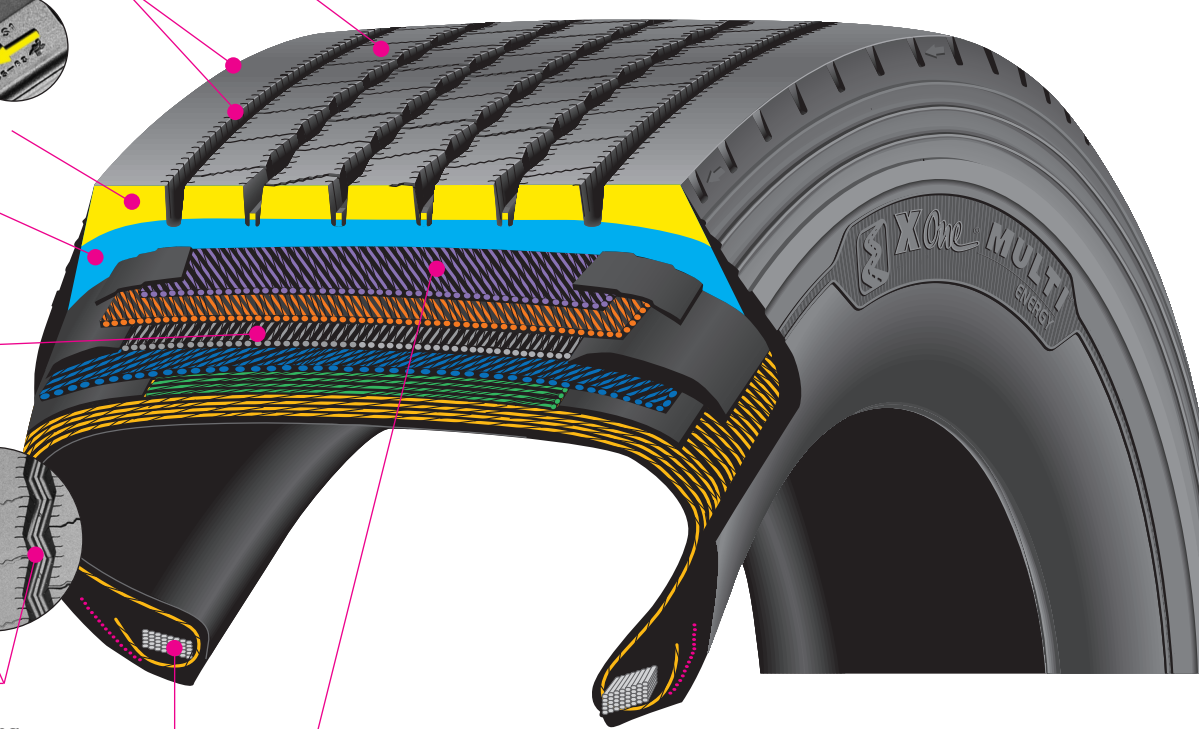
Delivers a 15% reduction in rolling resistance⁽²⁾

Driver Confidence

Outstanding handling

• Optimized Architecture

Wide grooves promote water evacuation



Size	Load Range	Catalog Number	Tread Depth	Max. Speed (*)		Loaded Radius		Overall Diameter		Overall Width †		Approved Wheel	Revs Per Mile	Max. Load and Pressure Single			
			32nds	mph	kph	in.	mm	in.	mm	in.	mm			lbs.	psi	kg.	kPa
445/50R22.5 ⁽³⁾	L	33836	16	75	120	18.4	467	39.6	1008	17.1	434	14.00	523	10200	120	4625	830
455/55R22.5 ⁽⁴⁾	L	47798	16	75	120	19.3	490	41.6	1058	17.7	449	14.00	499	11000	120	5000	830

(1) Versus MICHELIN® X ONE® XTE® tire in field testing and observation.

(2) Improvement based on comparison vs MICHELIN® X ONE® XTE® tire rolling resistance. Rolling resistance data is determined using drum tests according to ISO 28580 procedures. For more information, see your Michelin Truck Representative. Actual results may vary, and may be impacted by many factors, to include road conditions, weather and environment, driver performance, etc.

(3) Equivalent overall diameter to Michelin 275/80R22.5 trailer tire offering.

(4) Equivalent overall diameter to Michelin 11R22.5 or 275/80R24.5 trailer tire offering.

(*) Exceeding the lawful speed limit is neither recommended nor endorsed.

(†) Overall widths will change 0.1 inch (2.5 mm) for each 1/4 inch change in wheel width.

MICHELIN® tires and tubes are subject to a continuous development program. Michelin North America, Inc. reserves the right to change product specifications at any time without notice or obligations.

MNA, Inc. continually updates its product information to reflect any changes in Industry Standards. Printed material may not reflect the current Load and Inflation information. Please visit www.michelintruck.com for the latest product information. The actual load and inflation pressure used must not exceed the wheel manufacturer's maximum conditions. Never exceed a wheel manufacturer's limits without permission from the component manufacturer.

TO FIND OUT MORE
US: business.michelinman.com
CA: michelintruck.com/en_CA

FIND US ON FACEBOOK
[michelintruck](https://www.facebook.com/michelintruck)

VISIT US ON THE WEB
US: business.michelinman.com/contact-us
CA: michelintruck.com/en_CA/contact-us

CONTACT US BY TELEPHONE
US: 1-888-622-2306
CA: 1-888-622-2306