

THE MICHELIN® XDR® 250+ 50/80R57 TIRE



RUN HARDER, GET MORE LIFE

Maximize tire life for E4 Rigid Dump Trucks, even at the highest TKPH.



GET MORE LIFE

**INCREASE TIRE LIFE
BY 8%¹ FOR MB4 AND
MB THANKS TO:**

- Improved Wear Resistance
- Optimized Wear in Front and Rear Axles
- Increased Aggression Resistance²

IMPROVED WEAR RESISTANCE

With the second generation of revolutionary compounds.

- Two new compounds: MB4 and MB
- Exclusive new mixing process
- Much more homogeneous mix that leads to a slower wear rate
- Superior level of carbon black dispersion, leading to increased wear resistance



¹ The new MICHELIN® 50/80R57 XDR® 250+, has INCREASED TIRE LIFE BY 8%, thanks to new generation of compounds and innovative tread layers (1), and improved aggression resistance (2).

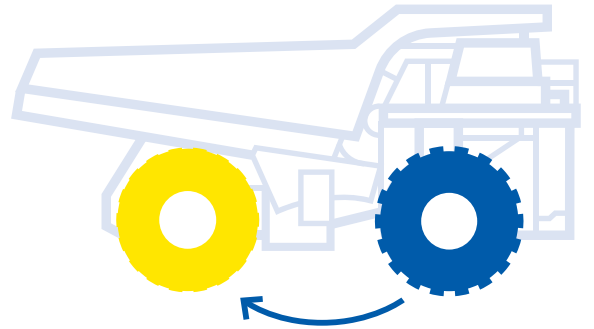
(1) Compared to MICHELIN® XDR® 250 50/80R57. Average performance by mine site. Projected improvement in tire life based on field performance in 70 customer mine sites over 25 months. Actual results may vary.

(2) Compared to MICHELIN® XDR® 250 50/80R57. Thanks to carrying the same load capacity at lower air pressure, according to the 2019 Michelin Databook.

OPTIMIZED WEAR ON FRONT AND REAR AXLES

With MICHELIN® multilayer technology.

- Blue layer is optimized for front axles for the first cycle of the tire's life.
- Yellow layer underneath is optimized for rear axles for the second cycle of the tire's life.
- Tires are designed to be rotated to the rear axles to increase tire life.

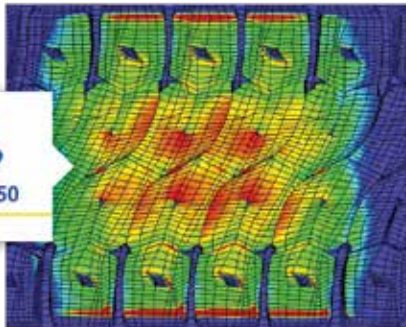


INCREASED AGGRESSION RESISTANCE

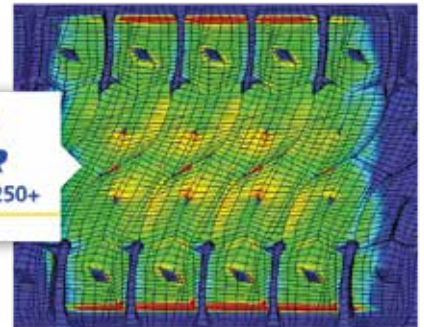
With an optimized contact patch that also...

- Delivers improved wear profile.
- Protects your truck.

**73 TONS
AT 8 BAR**
MICHELIN® XDR® 250



**73 TONS
AT 7 BAR**
MICHELIN® XDR® 250+



TIRE SPECIFICATIONS

COMMERCIAL DESCRIPTION	CAI MSPN	Max. dist./ hour km mile	TKPH TMPH	e mm inch	D mm inch	R' mm inch	RC mm inch	Tread Depth mm 32nd	Dual Spacing mm inch	Cap. liter gallon	Measuring Recommended Rim	Other Approved Rims
XDR® 250+ MB4 E4R ** 50/80 R 57 Tubeless	238454 22280	20 12.4	1072 734	1204 47.4	3610 142.1	1586 62.4	10791 424.8	94 118.4	1420 55.9	6150 1624.8	32.00/6.0 [5.2]	29.00/6.0 [5.2] 29.00/6.0 [5.7] 32.00/6.0 [4.8]
Bar	5	5.5	6	6.25	6.5	6.75	7					
<i>Psi</i>	72.5	80	87	91	94	98	102					
Machine - Use (kg - lbs) TRANSPORT												
STANDARD	57000	61000	65000	67000	69000	71000	73000					
	125663	134482	143300	147735	152145	156555	160965					
COMMERCIAL DESCRIPTION	CAI MSPN	Max. dist./ hour km mile	TKPH TMPH	e mm inch	D mm inch	R' mm inch	RC mm inch	Tread Depth mm 32nd	Dual Spacing mm inch	Cap. liter gallon	Measuring Recommended Rim	Other Approved Rims
XDR® 250+ MB E4R ** 50/80 R 57 Tubeless	264071 05633	24 14.9	1286 881	1204 47.4	3610 142.1	1586 62.4	10791 424.8	94 118.4	1420 55.9	6150 1624.8	32.00/6.0 [5.2]	29.00/6.0 [5.2] 29.00/6.0 [5.7] 32.00/6.0 [4.8]
Bar	5	5.5	6	6.25	6.5	6.75	7					
<i>Psi</i>	72.5	80	87	91	94	98	102					
Machine - Use (kg - lbs) TRANSPORT												
STANDARD	57000	61000	65000	67000	69000	71000	73000					
	125663	134482	143300	147735	152145	156555	160965					



Business.MichelinMan.com/Mining-Quarries

Copyright © 2021 Michelin North America, Inc. All rights reserved.
The Michelin Man is a registered trademark owned by Michelin.

