



LINE HAUL & COACH APPLICATIONS

THE MICHELIN® X® LINE ENERGY Z COACH TIRE

Improved fuel-efficient⁽¹⁾, all position service in long distance applications such as Highway Coach.⁽²⁾

Line Haul	Regional	Urban	On/Off Road
Recommended	Acceptable		



- (1) Based on industry standard rolling resistance testing of comparable tires or retreads. Actual results may vary, and may be impacted by many factors, to include road conditions, weather and environment, driver performance, etc.
- (2) "No bus shall be operated with regrooved, recapped or retreaded tires on the front wheels." US Code of Federal Regulations: Title 49, Transportation; Part 393.75.



THE MICHELIN® X® LINE ENERGY Z COACH

Improved fuel-efficient⁽¹⁾, all position service in long distance applications such as Highway Coach.⁽²⁾

Improved Fuel Economy

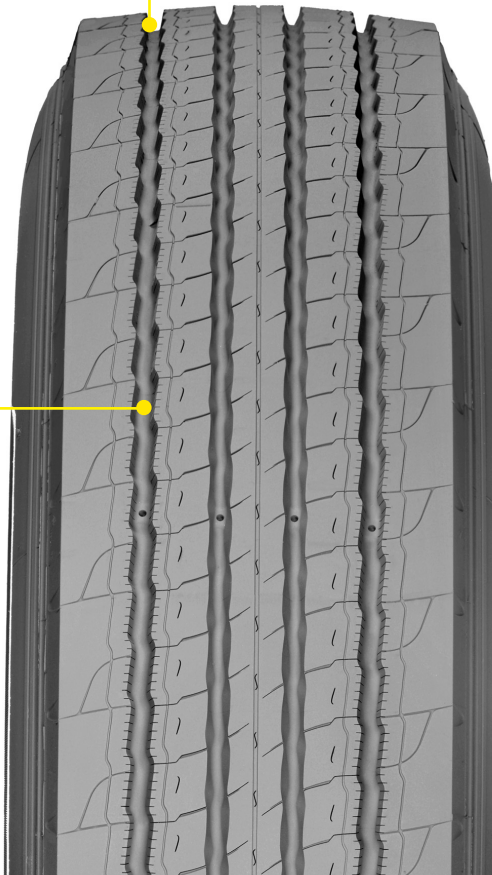
The MICHELIN® X® LINE ENERGY Z tire new tread compound generated a 7% reduction in rolling resistance versus the MICHELIN® XZA®2 ENERGY 315/80R22.5⁽³⁾ tire.

Excellent Tread Life

- **Groove Wall Miniature Sipes** – Helps fight irregular wear to improve mileage

Great Traction & Handling

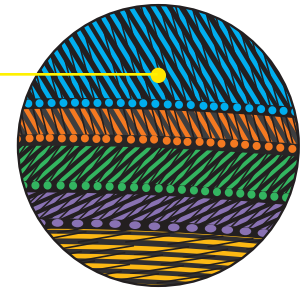
- **Increased Net Contact Area** – 3% greater contact area versus the MICHELIN® XZA®2 ENERGY tire meaning more rubber on the road
- **Zig-Zag Grooves** – Improves traction in new and worn tire conditions



Extended Casing Life

Long life and retreadability

- **Full Width Elastic Protector Ply** – Helps protect against penetrations, impacts breaks, and shocks for maximum casing durability.



Size	Load Range	Catalog Number	Tread Depth			Max. Speed (*)		Loaded Radius		Overall Diameter		Approved Wheels (Measuring wheel listed first.)	Min. Dual Spacing (‡)		Revs Per Mile	Max. Load and Pressure Single				Max. Load and Pressure Dual			
			32nds	mph	kph	in.	mm	in.	mm	in.	mm		in.	mm		lbs.	psi	kg.	kPa	lbs.	psi	kg.	kPa
315/80R22.5 ⁽³⁾	L	09807	17	75	120	19.6	497	42.3	1075	12.4	315	9.00, 9.75	13.8	351	491	9090	130	4125	900	8270	130	3750	900

Note: Wheel listed first is the measuring wheel.

(1) Based on industry standard rolling resistance testing of comparable tires or retreads. Actual results may vary, and may be impacted by many factors, to include road conditions, weather and environment, driver performance, etc.

(2) "No bus shall be operated with regrooved, recapped or retreaded tires on the front wheels." US Code of Federal Regulations: Title 49, Transportation; Part 393.75.

(3) Not approved for use with an 8.25 wheel on vehicles produced after January 1, 2018.

(*) Exceeding the lawful speed limit is neither recommended nor endorsed.

(‡) Overall width will change 0.1 inch (2.5 mm) for each 1/4 inch change in wheel width. Minimum dual spacing should be adjusted accordingly.

MICHELIN® tires and tubes are subject to a continuous development program. Michelin North America, Inc. reserves the right to change product specifications at any time without notice or obligations. MNA, Inc. continually updates its product information to reflect any changes in Industry Standards. Printed material may not reflect the current Load and Inflation information. Please visit business.michelinman.com for the latest product information. The actual load and inflation pressure used must not exceed the wheel manufacturer's maximum conditions. Never exceed a wheel manufacturer's limits without permission from the component manufacturer.

TO FIND OUT MORE
US: business.michelinman.com
CA: business.michelin.ca

FIND US ON FACEBOOK
[michelintruck](https://www.facebook.com/michelintruck)

CONTACT US ON THE WEB
US: business.michelinman.com/contact-us
CA: business.michelin.ca/contact-us

CONTACT US BY TELEPHONE
US: 1-888-622-2306
CA: 1-888-622-2306