

# **MICHELIN<sup>®</sup>**

## **AUTO HAULER OFFER**

**OUR ROBUST OFFERING OF DESIGNATED AUTO HAULER PRODUCTS AND SERVICES WILL KEEP YOU MOVING DOWN THE ROAD.**



**MICHELIN**

# MICHELIN® SERVICE SOLUTIONS



MICHELIN® COMMERCIAL SERVICE NETWORK™



## MICHELIN® TIRE CARE PREVENTIVE TIRE MONITORING

For utility fleets, safety and reliability are critical issues. With MICHELIN® TIRE CARE service program, you can get the most out of your assets and keep your fleet up and running with confidence.



### REDUCE DOWNTIME AND IMPROVE SAFETY

MICHELIN® TIRE CARE provides regular evaluation of all vehicle tires to maximize their readiness for the road and help avoid emergency road calls.

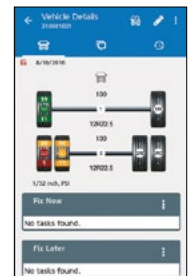


### IMPROVE CSA COMPLIANCE

Tire issues are one of the most frequent and severe CSA violations. MICHELIN® TIRE CARE can help improve CSA scores.



MICHELIN® TIRE CARE



## MICHELIN® ONCALL 2.0 NATIONWIDE 24/7/365 EMERGENCY ROAD SERVICE

When you're on the job, efficiency and uptime are key—especially when you are providing time-sensitive services. MICHELIN® ONCall 2.0 connects you to emergency mechanical, towing, and tire services during a breakdown to get you up and running quickly.



MICHELIN® ONCall 2.0



### LIVETRACK™ — EVENT MONITORING

Follow every breakdown with real-time dispatch screen views. No matter where you are, LIVETRACK™ can take you there virtually.

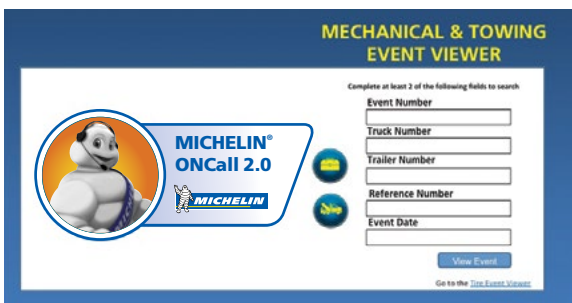


### FIXPIX™ — LIVE EVENT PICTURES

Access pictures of serviced tires from your computer or cell phone. No more questions. Just 100% proof of product and service.

## MICHELIN® ONLINE REPORTING REAL-TIME FLEET REPORTING

MICHELIN® Online Reporting helps drive cost, time, and operational savings with access to an array of reporting tools from retread and purchase reports to warranty and ERS reports. All of which can be managed across multiple jobs and sites.



# MICHELIN'S AUTO HAULER PRODUCT FOCUSES ON:

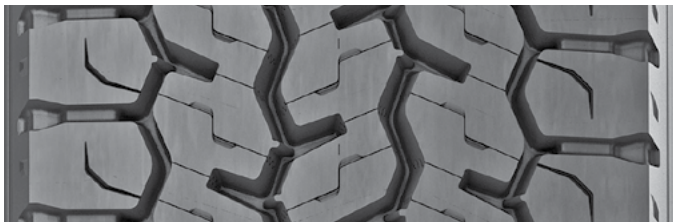
**Low Profile, High Load handling  
to help overcome height and weight  
limitations while carrying the latest  
SUV or 3/4 ton truck**



## **X® LINE™ ENERGY Z ALL-POSITION/STEER**

**An ultra fuel efficient, all position tire that also provides high mileage and enhanced casing durability.**

- Designed to run at 75 mph with a 14,780 pound load rating thanks to the following advancements.
  - Infini-Coil™ Belt Technology – Optimizes the shape of the contact patch for longer tread life and strengthens the crown against shocks and impacts.
  - Advanced Tensile Technology – Helps to improve the strength of the belt package.
  - Shock Pad – An increased layer of protection between the protector ply and the belt package to help absorb the forces of impacts and shocks.
- 17% improvement in wear life versus the MICHELIN® XZA®2 Energy tire in the 295/60R22.5 LRI size <sup>(1)</sup> Improved Compounding – Helps combining the latest Michelin Advanced Technology compounds and innovative tread design features to deliver increased removal miles.
- Better Miles per Gallon – 26% reduction in rolling resistance compared to the MICHELIN® XZA®2 Energy tire.<sup>(2)</sup>
- Syphon Groove – A new regenerating tread design that at 5/32nds fully exposes two additional circumferential grooves, which increases the ability to evacuate liquid material in later tread life.



## **X® MULTI™ D DRIVE AXLE**

**The MICHELIN® X® MULTI™ D is an open shoulder drive axle radial tire designed for regional applications.**

- 12% More Surface Contact Area <sup>(3)</sup> – Contributes to tread stability and efficient miles/32nds
- Advanced Technology Compound – Results in 13% lower rolling resistance for improved fuel efficiency<sup>(4)</sup>
- Aggressive Tread Design with Semi-Open Shoulder – Provides exceptional traction and driver confidence
- Robust 4 Belt Package – Provides stable footprint and overall durability

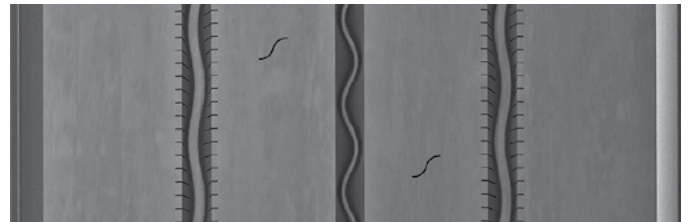
**Durability to deliver trucks and cars,  
day in and day out, with the security  
and safety of the Michelin brand.**



## **X® MULTI™ Z ALL-POSITION/STEER**

**An all position radial tire optimized for a wide spectrum of regional applications.**

- Increased Fuel Efficiency <sup>(5)</sup> - New tread compound lowers rolling resistance by 9% versus the MICHELIN® XZE®2+ tire.
- Reduced Irregular Wear - Directional tread design helps to reduce irregular wear.
- Enhanced Casing Life - Groove bottom protectors and stone ejectors help to reduce stone drilling to extend casing life.
- Extended Casing Life - Four-belt package helps to protect against shocks, impacts and road hazards.



## **X® LINE™ ENERGY T TRAILER AXLE**

**Fuel-efficient <sup>(5)</sup>, long wearing, small diameter trailer tire designed for high cube service in line haul applications.**

- Reduced rolling resistance of 14% vs. MICHELIN® XTA®2 ENERGY tire due to specially engineered rubber compounds.
- Up to 14% longer tread life than MICHELIN® XTA®2 ENERGY tire from a wider tread that distributes force, massive shoulders for scuff resistance, and micro sipes that help prevent abnormal wear.
- Driving confidence, especially in wet conditions, delivered by the efficient water evacuation of see-through circumferential grooves and blind sipes.
- Casing life is extended through the heat reducing impact of the rectangular bead bundle and an extended metallic chafer ply that protects against mounting damage and brake heat.

(1) Based on Michelin internal wear tests and extrapolation for tire size 295/60R22.5. Actual results may vary.

(2) Michelin internal testing.

(3) The 265/70R19.5 MICHELIN® X® MULTI™ D tread width is 0.4" greater than its predecessor the MICHELIN® XDE®2+ tire. When combined with the change in tread design the result is a 12% increase in rubber contact area with the road surface for a more sturdy footprint.

(4) Versus MICHELIN® XDE®2+ tire.

(5) Based on industry standard rolling resistance testing of comparable trailer tires. Actual results may vary, and may be impacted by many factors, to include road conditions, weather and environment, driver performance, etc.

# TIRE SPECIFICATIONS

Size	Tread Name	Load Range	Catalog Number	Tread Depth	Max. Speed (*)	Loaded Radius		Overall Diameter		Overall Width (‡)		Approved Wheels	Min. Dual Spacing (‡)		Revs Per Mile	Max. Load and Pressure Single				Max. Load and Pressure Dual			
				32nds	mph	in.	mm	in.	mm	in.	mm		in.	mm		lbs.	psi	kg.	kPa	lbs.	psi	kg.	kPa
295/60R22.5	X LINE ENERGY Z	J	35378	14	75	16.7	425	36.1	917	11.8	299	9.0	13.3	338	570	7390	130	3350	900	6780	130	3075	900
265/70R19.5	X MULTI D	G	92982	16	81*	15.8	402	34.2	868	10.3	262	7.50, 6.75	11.7	296	610	5510	112	2500	775	5205	112	2360	775
265/70R19.5	X MULTI Z	G	75319	16	81*	15.8	401	34.0	864	10.2	259	7.50, 6.75	11.5	293	609	5510	112	2500	775	5205	112	2360	775
265/70R19.5	X LINE ENERGY T	H	40936	13	62	15.7	399	33.9	862	10.4	265	7.50, 6.75, 8.25	11.8	300	608	6005	123	2725	850	5675	123	2575	850

Note: Wheel listed first is the measuring wheel.

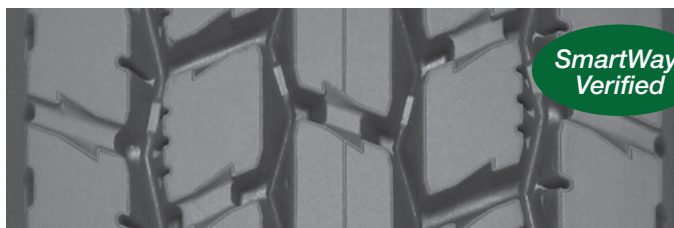
(\*) Exceeding the lawful speed limit is neither recommended nor endorsed.

(‡) Overall widths will change 0.1 inch (2.5 mm) for each 1/4 inch change in wheel width. Minimum dual spacing should be adjusted accordingly.

MICHELIN® tires and tubes are subject to a continuous development program. Michelin North America, Inc. reserves the right to change product specifications at any time without notice or obligations. Please consult wheel manufacturer's load and inflation limits. Never exceed wheel manufacturer's limits without permission of component manufacturer.

## RETREADABILITY— MAXIMIZE YOUR CASING INVESTMENT

MICHELIN® Retreads offer innovative, quality, high-performing retread products that are designed to help reduce operating costs.



### XDA2® 23 AT\* PRE-MOLD™ RETREAD DRIVE AXLE

Drive position retread designed for fuel savings, durability, and all-weather traction in wide-tread singles for line haul applications.

- Fuel efficient<sup>(1)</sup> Advanced Technology compound.
- No Compromise performance.
- Modified tread block design optimized for long, even wear.
- XDA2® 23 - also available as a Custom Mold™.

		XDA2 23 AT*			
Tread Sizes	Metric	211	219	225	232
MSPN		77114	59027	60625	80338
Tread Depth	Metric	18 mm			
	Inches	23/32"			

\* AT designated Advanced Technology™ Compounds for fuel savings.

(1) Based on industry standard rolling resistance testing of comparable tires and retreads. Actual results may vary, and may be impacted by many factors, to include road conditions, weather and environment, driver performance, etc.



### XZE® SA PRE-MOLD™ RETREAD TRAILER POSITION

Spread-axle retread designed to incorporate unique product and process advancements enabling it to deliver exceptional levels of durability and mileage in line haul and regional applications.

- Rounded shoulders to help minimize scrub effects typical of spread axle applications.
- Tapered tread extensions to help withstand shifting footprint stress typical of spread axle applications while helping to maintain casing durability.

Tread Sizes	Metric	185/225 <sup>(1)</sup>	195/235 <sup>(1)</sup>	205/245 <sup>(1)</sup>	215/255 <sup>(1)</sup>	225/265 <sup>(1)</sup>	245/285 <sup>(1)</sup>
MSPN		88535	41751	50852	77535	97320	25967
Tread Depth	Metric	14 mm					
	Inches	18/32"					

(1) Tread widths with two measurements have wings. The first number is tread base width in mm. The second number is the overall width, wing tip to tip.

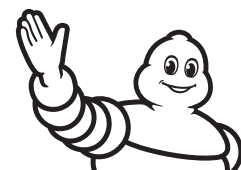
[www.MichelinTruck.com](http://www.MichelinTruck.com)

MICHELIN NORTH AMERICA, INC.  
Greenville, South Carolina, USA

An Equal Opportunity Employer.

Copyright © 2017 Michelin North America Inc. All rights reserved.

The Michelin Man is a registered trademark owned by Michelin North America, Inc. (10/17)



**MICHELIN**