

# MICHELIN® ROADBIB® TIRE



## **NEW VERSATILE TRACTOR TIRE FOR HEAVY ROAD USE**

FUEL SAVINGS

LONG LIFE

GREAT COMFORT

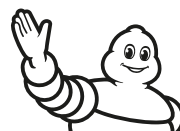
HANDLING & SAFETY



Tractors (4x4)



Tractors (FWA)



**MICHELIN**

# MICHELIN® ROADBIB® TIRE

## FOR HEAVY ROAD USE



### FUEL SAVINGS

- A wide footprint combined with a shallow tread provides low rolling resistance and reduced fuel consumption



### LONG LIFE

- Extraordinary longevity: +20% more rubber to the ground vs. MICHELIN® MachXBib®
- Exclusive design: new tread pattern and directional tires



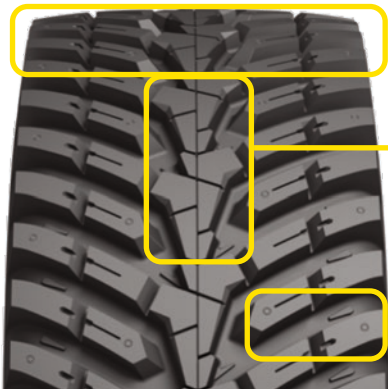
### GREAT COMFORT

- Full central rib improves casing stability and comfort on roads
- Reduced space between patterns (compared to traditional sculptures) helps limit cabin vibration and tire noise



### HANDLING & SAFETY

- Outstanding driving quality thanks to a new sculpture similar to that of a truck tire
- Excellent tire adhesion on wet roads thanks to vertical evacuation paths



**A wide footprint combined with a shallow tread provide low rolling resistance and thus reduced fuel consumption.**

#### Full central rib:

- Improves casing stability
- Reduces plant damage
- Improves comfort on roads

**Optimized tread pattern to increase service life**

Size	Load/Speed Index	MSPN	RCI
540/65R30	150D/146E	92680	-
600/70R30	158D/154E	73799	-
650/60R34	159D/155E	90034	-
650/65R34	161D/157E	35720	-
650/65R42	165D/161E	37067	-
710/70R42	173D/169E	03331	-
710/75R42	175D/171E	14014	-



Scan code to learn more!



TO FIND OUT MORE  
US: [business.michelinman.com/agriculture](https://business.michelinman.com/agriculture)  
CA: [business.michelin.ca](https://business.michelin.ca)

FIND US ON FACEBOOK  
@MichelinTruck

CONTACT US BY EMAIL  
US: [business.michelinman.com/contact-us](https://business.michelinman.com/contact-us)  
CA: [business.michelin.ca/contact](https://business.michelin.ca/contact)

CONTACT US BY TELEPHONE  
US: 1-888-622-2306  
CA: 1-888-622-2306

Michelin North America Inc., One Parkway South, Greenville, SC 29615  
Michelin North America (Canada) Inc., 2500 Daniel Johnson Blvd., Suite 500, Laval (QC) H7T 2P6  
Copyright © 2022 Michelin North America, Inc. All rights reserved. | © 2022 MNA(C). All rights reserved.  
Specifications subject to change without notice. | An Equal Opportunity Employer | PDF Only (BWA 06/22)

