



LINE HAUL APPLICATIONS

# THE MICHELIN® X® LINE ENERGY D CUSTOM MOLD RETREAD



The MICHELIN® X® LINE ENERGY D Custom Mold Retread offers SmartWay® fuel economy<sup>(1)</sup> with long tread life and excellent traction in a line haul energy drive retread.

Line Haul	Regional	Urban	On/Off Road
-----------	----------	-------	-------------

Recommended Acceptable



## BENEFITS:

### Driver Confidence

Seamless, Splice-less, New Tire Appearance



Custom Mold  
X® LINE ENERGY D



New Tire  
X® LINE ENERGY D



### SmartWay® Fuel Economy<sup>(1)</sup>

No Compromise Fuel Efficiency<sup>(1)</sup>

- Unique fuel efficient Advanced Technology Compound Tread
- Cool running tread rubber minimizes internal casing temperatures for low rolling resistance and extended casing life

### Superb Tread life

#### Extended Miles

Unique Advanced Technology Compound Tread

- Provides exceptional wear properties

Wider Footprint<sup>(2)</sup> and Solid Shoulder

- More contact area to distribute force

Sipe Saver Technology

- Tear drop sipes resist tearing

Casing Size	Tread Depth
275/80R22.5	17 mm
	21/32"

(1) Based on industry standard rolling resistance testing of comparable drive tires and retreads. Actual results may vary, and may be impacted by many factors, to include road conditions, weather and environment, driver performance, etc.

(2) As compared to MICHELIN® XDA2® 23 retreads.

(3) For more information on SmartWay® verified technologies, go to US: [www.epa.gov/smartway](http://www.epa.gov/smartway) or CA: <https://www.nrcan.gc.ca>.

TO FIND OUT MORE  
US: [business.michelinman.com](mailto:business.michelinman.com)  
CA: [business.michelin.ca](mailto:business.michelin.ca)

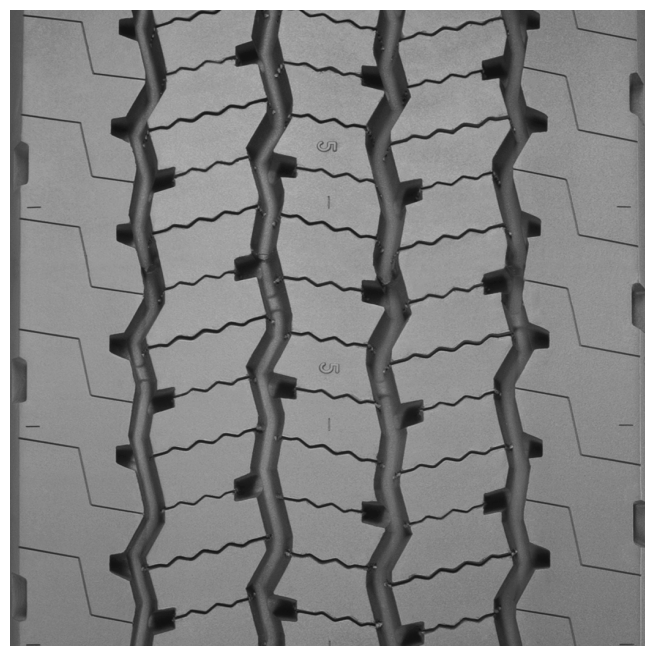
FIND US ON FACEBOOK  
[michelintruck](https://www.facebook.com/michelintruck)

CONTACT US ON THE WEB  
US: [business.michelinman.com/contact-us](mailto:business.michelinman.com/contact-us)  
CA: [business.michelin.ca/contact-us](mailto:business.michelin.ca/contact-us)

CONTACT US BY TELEPHONE  
US: 1-888-622-2306  
CA: 1-888-622-2306

Michelin North America Inc., One Parkway South, Greenville, SC 29615  
Michelin North America (Canada) Inc., 2500 Daniel Johnson Blvd., Suite 500, Laval (QC) H7T 2P6  
Copyright © 2022 MNA(C). All rights reserved.  
Copyright © 2022 Michelin North America, Inc. All rights reserved. An Equal Opportunity Employer PDF Only (08/22)

[business.michelinman.com](http://business.michelinman.com)



### Outstanding Traction

#### Matrix Siping

- **Matrix Sipes** provide inter-locking action which offers excellent traction and even wear.
- **Zig-Zag groove walls** provide optimized biting edges and excellent water and snow evacuation.
- **Full depth sipes** provide excellent traction throughout the life of the tread.

