



LINE HAUL APPLICATIONS

# THE MICHELIN® X ONE® LINE ENERGY D CUSTOM MOLD RETREAD



## MICHELIN RETREAD TECHNOLOGIES

The MICHELIN® X ONE® LINE ENERGY D Custom Mold Retread offers SmartWay® fuel economy<sup>(1)</sup> with long tread life and excellent traction in a line haul energy drive retread.

Line Haul	Regional	Urban	On/Off Road
Recommended	Acceptable		

### BENEFITS:

#### Driver Confidence

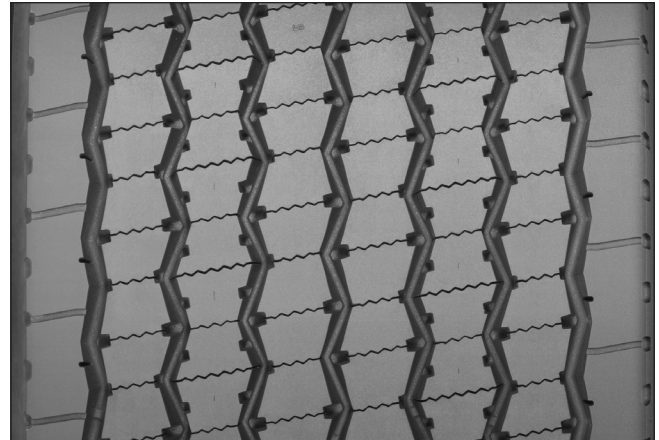
Seamless, Splice-less, New Tire Appearance



Custom Mold  
X ONE® LINE ENERGY D  
Non-Directional



New Tire  
X ONE® LINE ENERGY D  
Directional (4)



#### Outstanding Traction

- Full depth Zig-Zag Siping provide thousands of biting edges for traction

#### Max Secured Tread

- Provides maximum tread-to-shoulder adhesion

#### SmartWay® Fuel Economy<sup>(1)</sup>

#### No Compromise Fuel Efficiency<sup>(1)</sup>

- Unique fuel efficient Advanced Technology Compound Tread

#### Long Tread life

#### More Miles

#### Zig-Zag Siping

- Promotes even wear for long tread life

#### Unique Advanced Technology Compound Tread

- Provides exceptional wear properties

#### Quality: Michelin Tread + Michelin Casing

Only MICHELIN X ONE® 445/50R22.5 casings are approved for the 445 X ONE® LINE ENERGY D Custom Mold Retread<sup>(2)</sup>

- Michelin casing with a Michelin tread provide unsurpassed quality precision

#### More Revenue

Save weight and more payload

- Carry up to 1,400 pounds for trucks running the MICHELIN® X ONE® tires versus dual tires.<sup>(3)</sup>

Casing Size	Tread Depth
445/50R22.5	17 mm
	21/32"

(1) Based on industry standard rolling resistance testing of comparable drive tires and retreads. Actual results may vary, and may be impacted by many factors, to include road conditions, weather and environment, driver performance, etc.  
 (2) See your Authorized MRT Custom Mold Retreader for the approved Custom Mold Casing List at <https://business.michelinman.com/dealer-locator>  
 (3) Replacing dual tires on the drive and trailer positions with MICHELIN® X ONE® tires. <https://business.michelinman.com/freight-transportation/x-one-tires>  
 (4) For more information on SmartWay® verified technologies, go to US: [www.epa.gov/smartway](http://www.epa.gov/smartway) or CA: <https://www.nrcan.gc.ca>.

TO FIND OUT MORE  
 US: [business.michelinman.com](https://business.michelinman.com)  
 CA: [business.michelin.ca](https://business.michelin.ca)

FIND US ON FACEBOOK  
[michelintruck](https://www.facebook.com/michelintruck)

CONTACT US ON THE WEB  
 US: [business.michelinman.com/contact-us](https://business.michelinman.com/contact-us)  
 CA: [business.michelin.ca/contact-us](https://business.michelin.ca/contact-us)

CONTACT US BY TELEPHONE  
 US: 1-888-622-2306  
 CA: 1-888-622-2306

Michelin North America Inc., One Parkway South, Greenville, SC 29615  
 Michelin North America (Canada) Inc., 2500 Daniel Johnson Blvd., Suite 500, Laval (QC) H7T 2P6  
 Copyright © 2022 MNA(C). All rights reserved.  
 Copyright © 2022 Michelin North America, Inc. All rights reserved. An Equal Opportunity Employer PDF Only (08/22)

[business.michelinman.com](https://business.michelinman.com)

