



LINE HAUL APPLICATIONS

THE MICHELIN® X ONE® LINE ENERGY D CUSTOM MOLD RETREAD



MICHELIN RETREAD TECHNOLOGIES

The MICHELIN® X ONE® LINE ENERGY D Custom Mold Retread offers SmartWay® fuel economy⁽¹⁾ with long tread life and excellent traction in a line haul energy drive retread.

Line Haul	Regional	Urban	On/Off Road
Recommended	Acceptable		

BENEFITS:

Driver Confidence

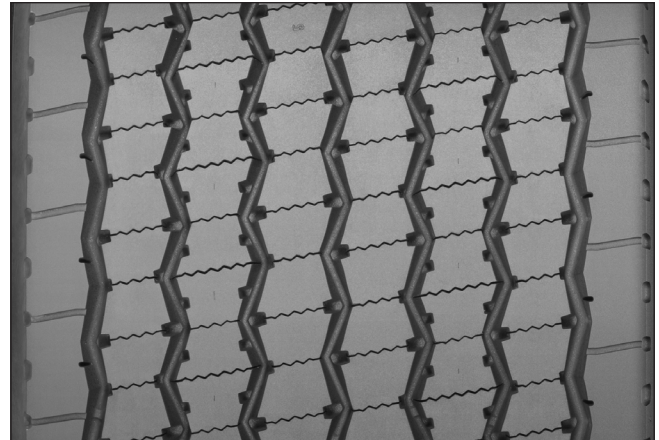
Seamless, Splice-less, New Tire Appearance



Custom Mold
X ONE® LINE ENERGY D
Non-Directional



New Tire
X ONE® LINE ENERGY D
Directional (4)



Outstanding Traction

- Full depth Zig-Zag Siping provide thousands of biting edges for traction

Max Secured Tread

- Provides maximum tread-to-shoulder adhesion

SmartWay® Fuel Economy⁽¹⁾

No Compromise Fuel Efficiency⁽¹⁾

- Unique fuel efficient Advanced Technology Compound Tread

Long Tread life

More Miles

Zig-Zag Siping

- Promotes even wear for long tread life

Unique Advanced Technology Compound Tread

- Provides exceptional wear properties

Quality: Michelin Tread + Michelin Casing

Only MICHELIN X ONE® 445/50R22.5 casings are approved for the 445 X ONE® LINE ENERGY D Custom Mold Retread⁽²⁾

- Michelin casing with a Michelin tread provide unsurpassed quality precision

More Revenue

Save weight and more payload

- Carry up to 1,400 pounds for trucks running the MICHELIN® X ONE® tires versus dual tires.⁽³⁾

Casing Size	Tread Depth
445/50R22.5	17 mm
	21/32"

(1) Based on industry standard rolling resistance testing of comparable drive tires and retreads. Actual results may vary, and may be impacted by many factors, to include road conditions, weather and environment, driver performance, etc.
 (2) See your Authorized MRT Custom Mold Retreader for the approved Custom Mold Casing List at <https://business.michelinman.com/dealer-locator>
 (3) Replacing dual tires on the drive and trailer positions with MICHELIN® X ONE® tires. <https://business.michelinman.com/freight-transportation/x-one-tires>
 (4) For more information on SmartWay® verified technologies, go to US: www.epa.gov/smartway or CA: <https://www.nrcan.gc.ca>.

TO FIND OUT MORE
 US: business.michelinman.com
 CA: business.michelin.ca

FIND US ON FACEBOOK
[michelintruck](https://www.facebook.com/michelintruck)

CONTACT US ON THE WEB
 US: business.michelinman.com/contact-us
 CA: business.michelin.ca/contact-us

CONTACT US BY TELEPHONE
 US: 1-888-622-2306
 CA: 1-888-622-2306

Michelin North America Inc., One Parkway South, Greenville, SC 29615
 Michelin North America (Canada) Inc., 2500 Daniel Johnson Blvd., Suite 500, Laval (QC) H7T 2P6
 Copyright © 2022 MNA(C). All rights reserved.
 Copyright © 2022 Michelin North America, Inc. All rights reserved. An Equal Opportunity Employer PDF Only (08/22)

business.michelinman.com

