



LINE HAUL APPLICATIONS

THE MICHELIN® X® LINE ENERGY T SIPEP PRE-MOLD RETREAD



MICHELIN RETREAD TECHNOLOGIES

A premium trailer position siped retread for line haul applications, designed to provide fuel efficiency⁽¹⁾ and long, even wear.

Line Haul	Regional	Urban	On/Off Road
<input checked="" type="checkbox"/>	<input type="checkbox"/>	<input type="checkbox"/>	<input type="checkbox"/>

Recommended Acceptable

BENEFITS:

Resists onset of uneven wear

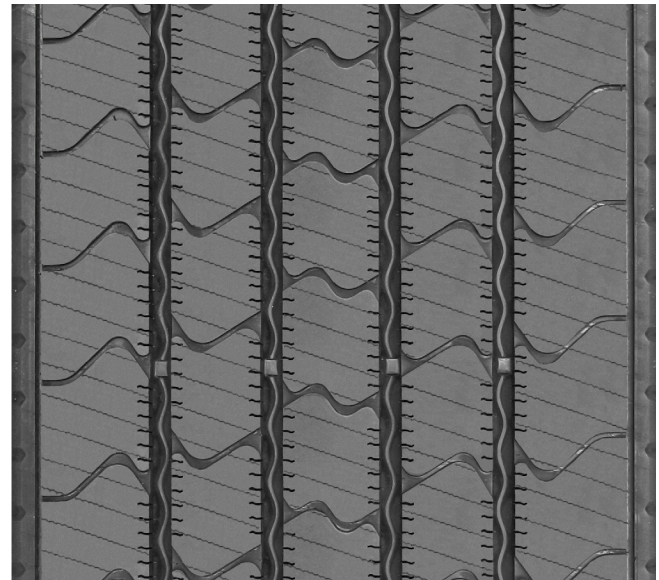
- New siping technology and decoupling groove to support even wear on the trailer axle position.
- Wider tread widths available
 - Stress on the tread is more evenly distributed for long, even tread life.

Fuel Savings

- Advanced compound tread
 - The MICHELIN® X® Line Energy T Pre-Mold retread provides 5.0% lower rolling resistance vs. the MICHELIN® XT-1® AT Pre-Mold retread.⁽¹⁾
- Meets SmartWay® requirements.

Lower Total Cost of Ownership

- Designed for fuel efficiency, long tread life and even wear to drive competitive advantage for the fleet.
- Variable groove bottom features to help resist stone retention for longer wear



Also available as a Pre-Mold retread.

Tread Size	Metric	200	210	220	230	240	250
Tread Depth	Metric	9 mm					
	Inches	11/32"					

⁽¹⁾ Based on external rolling resistance tests of the MICHELIN® X® Line Energy T Pre-Mold retread in 230 mm width and current MICHELIN® XT-1® AT Pre-Mold retread in 225 mm width using ISO 28580 test method in tire size YOK RY617 295/75R22.5. Actual on-road fuel saving results may vary, and may be impacted by many factors, to include road conditions, weather, environment, combination of steer and trailer tires used, driving habits, tire size, equipment and maintenance.

TO FIND OUT MORE
US: business.michelinman.com
CA: business.michelin.ca

FIND US ON FACEBOOK
[michelintruck](https://www.facebook.com/michelintruck)

CONTACT US ON THE WEB
US: business.michelinman.com/contact-us
CA: business.michelin.ca/contact-us

CONTACT US BY TELEPHONE
US: 1-888-622-2306
CA: 1-888-622-2306

Michelin North America Inc., One Parkway South, Greenville, SC 29615
Michelin North America (Canada) Inc., 2500 Daniel Johnson Blvd., Suite 500, Laval (QC) H7T 2P6
Copyright © 2022 MNA(C). All rights reserved.
Copyright © 2022 Michelin North America, Inc. All rights reserved. An Equal Opportunity Employer PDF Only (08/22)

business.michelinman.com

