



REGIONAL & LINE HAUL APPLICATIONS

THE MICHELIN® XTA®-2 SIPED PRE-MOLD RETREAD



The MICHELIN® XTA®-2 Siped Pre-Mold Retread is a trailer tread designed to deliver enhanced wear-life in regional and line haul service.

Line Haul	Regional	Urban	On/Off Road
<input checked="" type="checkbox"/> Recommended	<input checked="" type="checkbox"/> Recommended	<input type="checkbox"/> Acceptable	<input type="checkbox"/> Acceptable

BENEFITS:

Fuel Efficiency –

Provides low rolling resistance

- **Advanced Technology compound**

Strong Wet Weather Performance –

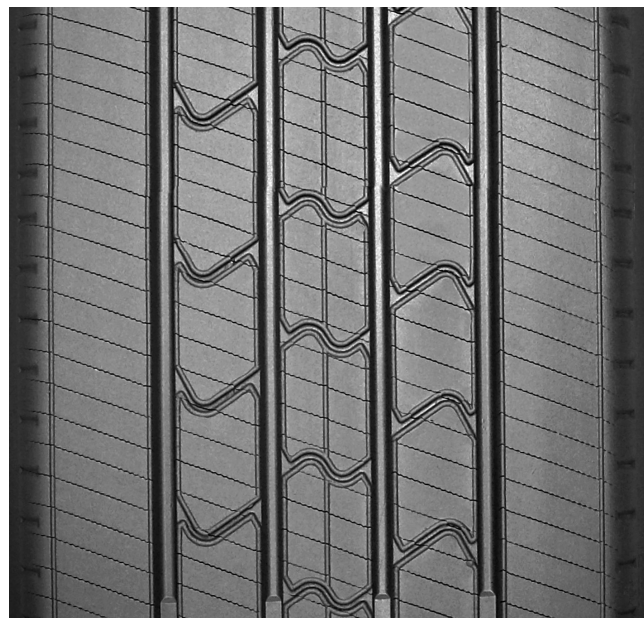
Effective water evacuation

- **Four see through circumferential grooves**


Good Durability –

Scrub and abrasion resistance

- **Solid shoulder**



Size \ # Die	Metric	211 \ #8.5	219 \ #9.0	225 \ #9.5	240
Tread Depth	Metric	9 mm			
	Inches	11/32"			

 TO FIND OUT MORE
US: business.michelinman.com
CA: business.michelin.ca

 FIND US ON FACEBOOK
[michelintruck](https://www.facebook.com/michelintruck)

 CONTACT US ON THE WEB
US: business.michelinman.com/contact-us
CA: business.michelin.ca/contact-us

 CONTACT US BY TELEPHONE
US: 1-888-622-2306
CA: 1-888-622-2306

Michelin North America Inc., One Parkway South, Greenville, SC 29615
Michelin North America (Canada) Inc., 2500 Daniel Johnson Blvd., Suite 500, Laval (QC) H7T 2P6
Copyright © 2021 MNA(C)I. All rights reserved.
Copyright © 2021 Michelin North America, Inc. All rights reserved. An Equal Opportunity Employer PDF Only (08/21)

business.michelinman.com

