

**TYRE THAT RUNS
STRONGER FOR LONGER*.**



*Subject to terms and conditions



**INTRODUCING
MICHELIN 295/80R22.5
X MULTI Z2 & D+**

**LONGER MILEAGE, BETTER ENDURANCE
AND MULTIPLE RETREADS.**



MICHELIN X MULTI Z2 & X MULTI D+



"STRONGER"*** TYRE WITH HIGHEST LOAD CARRYING CAPACITY:

- Robust sidewall: Thanks to Powercoil Technology, a new generation of robust steel cables used in casing to provide improved resistance to distortion and damage.
- Thanks to Infinicoil & Powercoil Technology which allows higher loading and reduced downtime.
- Self generating tread blocks supported by Michelin 3D metal printing technologies provide solid grip throughout the tyre's life.



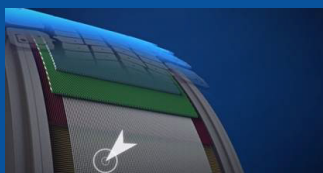
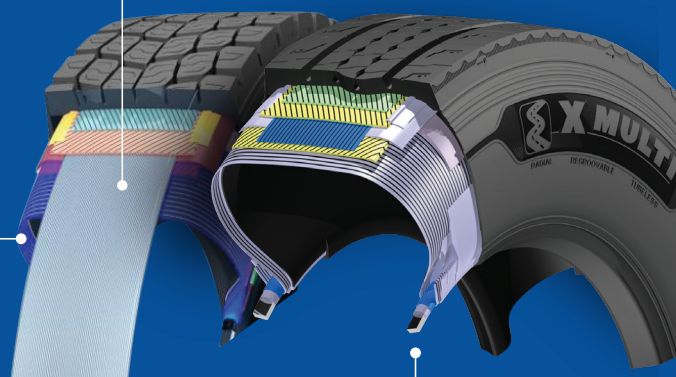
HIGHEST LOAD CARRYING CAPACITY IN Z+D COMBINATION:

- XMZ2 and XMD+ comes with 154/150 load index enabling the fleet owners to operate as per new load regulations enabling to carry more load with less stress on the casing.



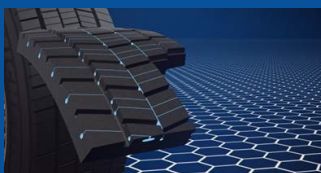
"LONGER" TYRE LIFE*:

- Newly developed tread design with straight shoulder profile design helps minimize uneven wear & solid blocks provide exceptional traction, thus maximizing overall tyre life.
- Retreadability: Thanks to Duracoil Technology, which creates a unique reinforced zone between tyre and wheel for better robustness in bead and enhancing the retreadability.



INFINICOIL TECHNOLOGY MICHELIN ENDURANCE OVER THE TYRE'S LIFETIME

- A continuous steel wire (approx 400 metres) wrapped around the tyre to provide greater stability for lifetime
- Enhanced endurance with higher load index or harder usage conditions for your confident ride
- With benchmark endurance, Infinicoil Technology gives you more mileage and fuel savings



REGENION TECHNOLOGY MICHELIN GRIP MILE AFTER MILE

- Self-regenerating tread blocks, supported by MICHELIN mold 3D metal printing technologies, provide solid grip throughout your tyre's lifetime
- New grooves emerge over the tyre's life for enhanced mobility
- Our rigid and compact tread pattern helps lower fuel consumption and tread aggression



POWERCOIL TECHNOLOGY MICHELIN ENDURANCE WITH IMPROVED ROLLING RESISTANCE

- A new generation of more robust steel casing cables make them lighter leading to better endurance and better rolling resistance



DURACOIL TECHNOLOGY A REINFORCED BEAD FOR BETTER ROBUSTNESS

- Duracoil brings a unique reinforced zone between the tyre and the wheel for better robustness and longer life
- Our high-end nylon protects the bead bundle for better stability while rolling

TECHNICAL SPECIFICATIONS

SIZE	LOAD INDEX/ SPEED INDEX (LI/SI)	PR	LOAD/TYRE IN KGS (S/D)	MAX. SPEED (KM/HR)	OVERALL DIAMETER (MM)	SECTION WIDTH (MM)	RECOMMENDED RIM WIDTH (MM/IN)	ORIGINAL TREAD DEPTH (MM)
X MULTI D+ 295/80R22.5	154/150L	18	3750/3350	120	1058	298	209.5X571.5/ 8.25X22.5	21
X MULTI Z2 295/80R22.5	154/150L	18	3750/3350	120	1045	295	209.5X571.5/ 8.25X22.5	15

* When used in combination of X Multi Z2 and X Multi D+ in combinations & based on field data collected vs. same sized leading international competitor tyre.

** When compared with previous generation XMZ pattern in 295/80R22.5 dimension.

Subject to Michelin Terms & Conditions. For complete terms and conditions, please visit www.michelintransport.in. All Michelin tyres are subject to Michelin standard warranty.

⚠ Warning: Serious or fatal injury may result from tyre failure due to incorrect selection, fitting, usage or maintenance of tyres. To ensure correct selection, fitment, usage and maintenance, refer to the Michelin Truck and Bus Tyre Service Manual (Asia-Pacific edition) - available at a Michelin Tyre dealer. Please consult a tyre professional for all tyre related issues.



MICHELIN