



**TYRE THAT RUNS
SAFER FOR LONGER.**



**INTRODUCING
MICHELIN 295/80R22.5 X MULTI Z2**



Enhanced safety features
for superior handling and control



Unmatched mileage
- Lowest cost per kilometer

MICHELIN 295/80 R22.5 X MULTI Z2



GUARANTEED 30%** MORE TYRE MILEAGE

- Self-generating tread design that reduces wear rate to prolong tread life
- Compact sculpture with higher rubber volume for better mileage



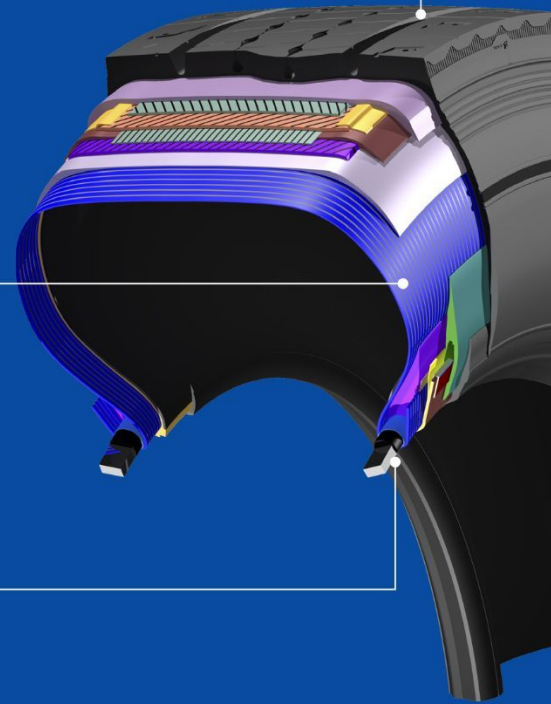
UP TO 3%*** FUEL SAVING

- Power Coil provides shielded cable with improved heat dissipation for better fuel saving
- Rigid and compact tread pattern helps in lower fuel consumption



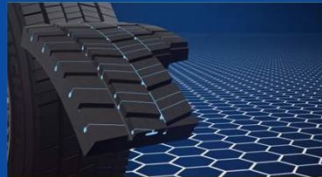
STRONG CASING

- **Safety:** Thanks to Infinicoil technology for enhanced endurance which ensures safe operation
- **Retreadability:** Thanks to Duracoil technology which creates a unique reinforced zone between tyre and wheel for better robustness in bead



INFINICOIL TECHNOLOGY MICHELIN ENDURANCE OVER THE TYRE'S LIFETIME

- A continuous steel wire (approx 400 metres) wrapped around the tyre to provide greater stability for lifetime
- Enhanced endurance with higher load index for harder usage conditions for your confident ride
- With benchmark endurance, Infinicoil Technology gives you more mileage and fuel savings



REGENION TECHNOLOGY MICHELIN GRIP MILE AFTER MILE

- Self-regenerating tread blocks, supported by MICHELIN mold 3D metal printing technologies, provide solid grip throughout your tyre's lifetime
- New grooves emerge over the tyre's life for enhanced mobility
- Our rigid and compact tread pattern helps lower fuel consumption and tread aggression



POWERCOIL TECHNOLOGY MICHELIN ENDURANCE WITH IMPROVED ROLLING RESISTANCE

- A new generation of more robust steel casing cables make them lighter leading to better endurance and better rolling resistance



DURACOIL TECHNOLOGY A REINFORCED BEAD FOR BETTER ROBUSTNESS

- Duracoil brings a unique reinforced zone between the tyre and the wheel for better robustness and longer tyre life
- Our high-end nylon protects the bead bundle for better stability while rolling

TECHNICAL SPECIFICATIONS

Size	Load/Speed Index	PR	Load/Tyre in Kg (S/D)	Max. Speed (km/hr)	Max Inflation Pressure		Overall Diameter (mm)	Section Width (mm)	Recommended Rim Width (mm/in)	Tread Depth (mm)
					Bar	PSI				
295/80 R22.5 X Multi Z2	154/150L	18	3750/3350	120	Bar	PSI	1045	295	209.5X571.5 / 8.25X22.5	15
					8.50	130				

*With multiple retreads using Michelin recamic tread bands. Periodic alignment and vehicle maintenance needs to be done to achieve the optimum mileage.

**Based on internal assessment as well as field data collected vs same sized leading international competitor tyre.

***As per RRt data from IRMARA

Subject to Michelin Terms & Conditions. For complete terms and conditions, please visit www.michelintransport.in

⚠ All Michelin tyres are subject to Michelin standard warranty.

Warning: Serious or fatal injury may result from tyre failure due to incorrect selection, fitting, usage or maintenance of tyres. To ensure correct selection, fitment, usage and maintenance, refer to the Michelin Truck and Bus Tyre Service Manual (Asia-Pacific edition) - available at a Michelin Tyre dealer. Please consult a tyre professional for all tyre related issues.



MICHELIN