

# MICHELIN® X®HA 2™

LONG LASTING PERFORMANCE



OPTIMIZE YOUR OPERATIONAL COST  
THANKS TO AN EXCEPTIONAL TIRE LIFE

X®HA 2™  
80 SERIES

X®HA 2™  
65 SERIES

**MICHELIN**





Wheel Loaders



Motor Graders



## +16% WEAR LIFE<sup>(1)</sup>

The MICHELIN® X® HA 2™ lasts up to 16%<sup>(1)</sup> on average more hours compared to premium competitors tires over the course of 5 years.

Wear resistant rubber compound

More rubber to be worn<sup>(2)</sup> MICHELIN® X® HA 2™: + 9,5% volume of tread rubber vs. Alternative producer 1 and + 4,6% vs Alternative producer 2

Optimized contact patch with the ground



## DESIGNED TO BE RETREADED

Michelin XHA 2 is up to 19%<sup>(4)</sup> cooler than alternative producer 1 & 2. Heat is the number one enemy of a tire. If your tire runs cooler it will last longer and improve its retreadability. Up to 81% of Michelin construction tire are retreadable<sup>(3)</sup>.



## BETTER COMFORT FOR THE OPERATOR<sup>(6)</sup>

The new and retreaded Michelin XHA 2 generates up to 24.7% less vibration (m/s<sup>2</sup>) to the operator than Alternative producer 3 and up to 34% less than Alternative producer 4.



## BETTER RESISTANCE TO AGGRESSIONS<sup>(5)</sup>

The Michelin tire is engineered with an architecture designed to absorb impact, minimizing damage, allowing your tire to continue working.

**MICHELIN® X® HA 2™ HAS MORE SIDEWALL PUNCTURE RESISTANCE THAN ALTERNATIVE PRODUCER 1**

17.5 R 25 MICHELIN® X® HA 2™ A L3 * 176A2	CAI 717546
20.5 R 25 MICHELIN® X® HA 2™ L3 * 186A2	CAI 899613
23.5 R 25 MICHELIN® X® HA 2™ L3 * 195A2	CAI 139147
26.5 R 25 MICHELIN® X® HA 2™ L3 ** 209A2	CAI 893825
29.5 R 25 MICHELIN® X® HA 2™ L3 ** 216A2	CAI 961307

MICHELIN® X® HA 2™	ALTERNATIVE PRODUCER 1
Superficial damage, no impact on the casing	The casing is destroyed, impossible to repair

(1) Compared to Premium competitors (Alternative producer 1 & 2), field study in real life conditions made by Michelin for 5 years 2012-2017, on 170 tires in Eastern Europe, Western Europe, China and Asia South Pacific; same size (23.5 R25, 26.5 R25 and 29.5 R 25) and same usage.

(2) Measurement certified by the Michelin Center of Technology, using XAO software, comparison of MICHELIN® X® HA 2™ 26.5 R 25 against Alternative producer 1 & 2, same size.

(3) Measurement on retreadable capability made by Pneu Laurent over 2 years (2015-2017), on 578 Michelin tires on the same dimension (26.5 R 25) in Europe.

(4) Measurement certified by the Michelin Center of Technology, conducted at the Mining Testing Center in Almeria, Spain, in July 2016. Thermal measurements taken using a thermal imaging camera. Comparison of MICHELIN® X® HA 2™ 26.5 R 25 against Alternative producer 1 & 2 26.5 R 25. All tires followed the same protocols and configuration (temperature, track), same number of tires tested. Test organized using a CAT 966 M, at 15km/h with 12000kg of load, at 4 bars pressure.

(5) Test certified by Michelin Center of Technology, conducted at the Mining Testing Center in Almeria, Spain, in July 2016. Comparison of MICHELIN® X® HA 2™ against Alternative producer 1, same size. All tires followed the same protocols and configuration, same number of tires tested. Test organized using a CAT 966 M, at 15 km/h, with 12000 kg of load, at 4 bars pressure.

(6) Test certified by the Michelin Center of Technology, conducted in Ladoux, France in July 2021. Vibration measurement collected using a cushion type vibration dosimeter. Comparison of Michelin® X® HA 2™ 23.5 R 25 against Michelin GLHA2 (retreaded XHA 2), Alternative producer 3 & 4 23.5 R 25. All tires followed the same protocols and configuration (temperature track), Test organized using a Volvo L120G following the manufacturer's tire pressure recommendations.

ALL OF MICHELIN® X® HA 2™  
80 SERIES BENEFITS AND MORE



80 SERIES



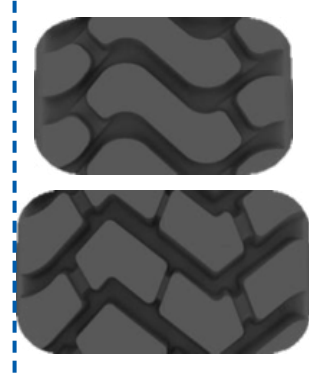
- **HIGHER FOOTPRINT**
- **HIGHER AIR VOLUME**



65 SERIES

**HIGHER FOOTPRINT**

- Up to **+49%** more tread rubber<sup>(7)</sup> to protect your tire and insure its retreadability
- Better traction on mixed soil



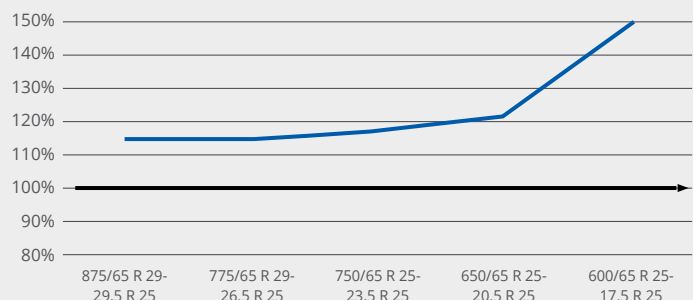
**+14%** FOOTPRINT SURFACE AND GREATER NUMBER OF EDGES<sup>(8)</sup>



**HIGHER AIR VOLUME**

- Better confort for the operator with up to 10% or more shock absorption<sup>(8)</sup>
- Better flotation in soft soils

**SHOCK ABSORPTION  
SERIE 65 / SERIE 80**



875/65 R 29 MICHELIN® X® HA 2™ L3 \* 214A2 CAI 936624  
775/65 R 29 MICHELIN® X® HA 2™ L3 \* 206A2 CAI 992646

(7) Internal comparison between 875/65 R 29 X® HA 2™ and 29.5 R 25 X® HA 2™, +49% and +45% between a 775/65 R 29 X® HA 2™ and 26.5 R 25 X® HA 2™, measurements certified by the Michelin® Center of Technology  
(8) Internal comparison between 875/65 R 29 X® HA 2™ and 29.5 R 25 X® HA 2™, measurements certified by the Michelin® Center of Technology



**MICHELIN**



**OUR WEBSITE**  
michelinearthmover.com



**TESTIMONIALS**  
YouTube channel



**PRESSURE ADVISOR**  
pressureadvisor.michelinearthmover.com

**AUTHORIZED DISTRIBUTOR:**

A large, empty white rounded rectangular box intended for the name of the authorized distributor.