

# MICHELIN X LINE TROPIC D2

**LONGEVITY,  
ROBUSTNESS,  
SAFETY**

**LONG HAUL TRANSPORTATION,  
RESISTING HOT TEMPERATURE  
CONDITIONS**



## **CUT OPERATING COSTS**

15% additional mileage<sup>(1)</sup>  
Improved fuel efficiency<sup>(2)</sup>

315/80R22.5



DESIGNED FOR LONG  
DISTANCE JOURNEYS,  
MOTORWAYS AND  
NATIONAL ROADS

**DRIVE  
POSITION**



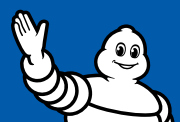
FOR DRIVE AXLES

**M+S**



<sup>(1)</sup>Based on internal mileage performance test conducted vs its predecessor MICHELIN 315/80R22.5 X Line Tropic D

<sup>(2)</sup>Due to the 9% reduction in rolling resistance vs its predecessor MICHELIN 315/80R22.5 X Line Tropic D



**MICHELIN**

# MICHELIN X LINE TROPIC D2



## IMPROVED PROFITABILITY

- +15% mileage compared to X Line Tropic D
- Improved fuel efficiency, thanks to the 9% reduction in rolling resistance.



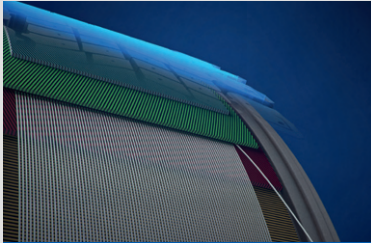
## DESIGNED FOR HOT CLIMATES

- Heat-resistant rubber compound (TROPIC)



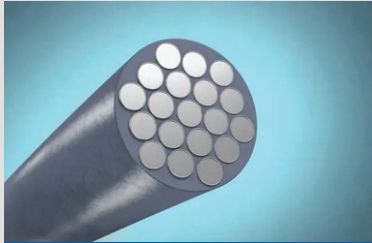
## NEW TREAD DESIGN

- Compact look
- Enhanced mobility



### INFINICOIL TECHNOLOGY

A continuous steel wire which can be as long as 400 meters wrapped around the tyre to provide it with greater stability throughout its lifetime. On top of benchmark endurance, tyres designed with INFINICOIL™ get you more mileage.



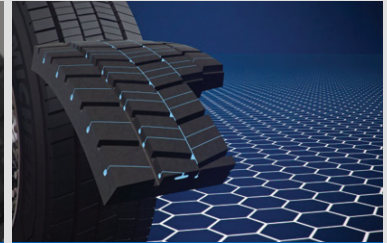
### POWERCOIL TECHNOLOGY

A new generation of more robust-steel cables offers a better oxidation resistance and enhances the casing endurance.



### FEAO++

A new generation of anti-oxidant sidewall mix to provide high resistance against rubber aging & ozone effect, hence protects the casing.



### REGENION

Self-regenerating tread blocks, supported by MICHELIN mold 3D metal printing technologies, providing solid grip throughout your tire's lifetime & conditions. New grooves emerge over the tire's life for enhanced mobility. The tread pattern is more compact and rigid: you benefit from lower fuel consumption.

## MICHELIN TECHNICAL TRUCK TYRE DATA

TREAD PATTERN & DIMENSION	TYPE	LOAD & SPEED INDEX	SECTION WIDTH (MM)	FREE DIAMETER (MM)	LADEN RADIUS (MM)	ADVISED RIMS (INCH)	Original Tread Depth (MM)	Recommended Nominal Pressure (Bar)
315/80R22.5 X LINE TROPIC D2	TL	156/150 L	316.1	1080.8	502.41	9.00	17.8	8.5



## REGROOVING INFORMATION

REGROOVING DEPTH*	APPROXIMATE REGROOVING WIDTH	SUGGESTED BLADE
3 mm	8 - 10 mm	R3



Retreadable with Recamic



\*The depth of the regroove should always be checked before regrooving.

Warning: MICHELIN truck tyres are designed and optimized for specific condition of usage which can be found in the MICHELIN Truck and Bus Tyre Technical Data Book. It is therefore, not advisable to use the product in condition of use outside the parameters of which it was designed for. Operations outside these parameters are identified as abnormal usage and are not eligible for warranty consideration. Serious or fatal injury may result from tyre failure as a result of operating outside the tyre intended condition of use. Refer to MICHELIN Truck and Bus Tyre Technical Data Book, MICHELIN Truck and Bus Tyre Service Manual or consult your MICHELIN Truck Tyre professional for recommendations and procedures.