

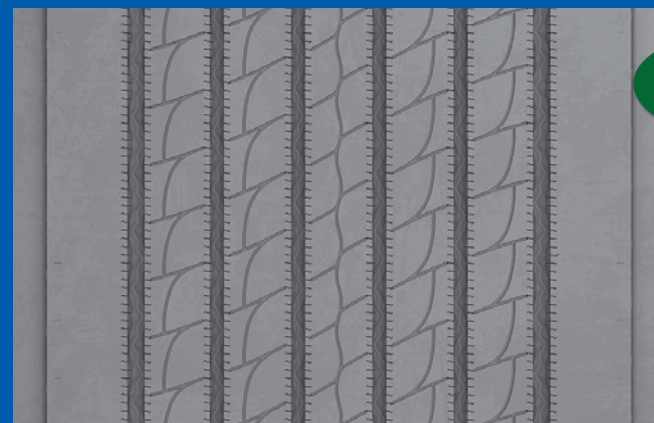


THE MICHELIN® X ONE® LINE ENERGY T2 PRE-MOLD RETREAD

The MICHELIN® X ONE® LINE ENERGY T2 Pre-Mold Retread is designed for improved tread wear while providing durability and fuel savings⁽¹⁾ to lower your total cost of ownership (TCO).

OUR PROMISE:

If the MICHELIN® X ONE® LINE ENERGY T2 Pre-Mold Retread does not improve your mileage performance over the Bandag® B135 Fuel Tech™ Retread by 10%, we will make it right!



SmartWay®
Verified⁽¹⁾

⁽¹⁾ The U.S. EPA as part of their SmartWay® Program has demonstrated incremental fuel savings when low rolling resistance tires are used just on the tractor and/or just on the trailer. Actual results may vary, and may be impacted by many factors, to include road conditions, weather, environment, combination of steer and drive tires used, driving habits, tire size, equipment, and maintenance.



THE MICHELIN® X ONE® LINE ENERGY T2 PRE-MOLD RETREAD

Mileage Performance Promise

Let us prove the MICHELIN® X ONE® LINE ENERGY T2 Pre-Mold Retread is the product for you.

*If the retread does not improve your mileage performance over the Bandag® B135 Fuel Tech™ Retread by 10%, we will reimburse the fleet the difference in price.**

***Terms and Conditions:**

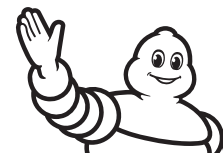
Valid only for MICHELIN® X ONE® LINE ENERGY T2 Pre-Mold Retread bought from an authorized dealer. Applicable to a maximum of 32 trailer retreads per bill-to location/customer. Valid for line haul trailer applications. You must assign a minimum of two similar trailers, operating in similar environments and routes. Applicable only versus the Bandag® B135 Fuel Tech™ Retread. Promise based on the comparison between the Bandag® B135 Fuel Tech™ Retread baseline and the MICHELIN® X ONE® LINE ENERGY T2 Pre-Mold Retread; proof of purchase with date and purchase price necessary for both the Bandag® B135 Fuel Tech™ Retread and the MICHELIN® X ONE® LINE ENERGY T2 Pre-Mold Retread. Promise will pay in the form of a credit for the difference in purchase price of the MICHELIN® X ONE® LINE ENERGY T2 Pre-Mold Retread and the Bandag® B135 Fuel Tech™ Retread. Credit will be issued and all documentation must be validated by a Michelin Sales Representative. All Michelin limited warranty exclusions still apply. See warranty for details. Michelin reserves the right to modify or discontinue this program at any time for any reason without prior notice. All claims must be made by December 31, 2023. See your local Michelin dealer, your sales representative or go to business.michelinman.com for more details.

Michelin North America, Inc., One Parkway South, Greenville, SC 29615
Michelin North America (Canada), Inc., 2500 Daniel Johnson Blvd., Suite 500, Laval (QC) H7T 2P6
© 2023 MNA(C)I. All rights reserved.
© 2023 Michelin North America, Inc. All rights reserved. An Equal Opportunity Employer (03/23)



**MICHELIN
RETREAD
TECHNOLOGIES**

SmartWay®
Verified



MICHELIN

