



REGIONAL & URBAN APPLICATIONS

THE MICHELIN X ONE® XDS® 2 PRE-MOLD RETREAD



The Michelin X ONE® XDS® 2 Pre-Mold drive axle retread is designed for extreme winter conditions to promote driver confidence and security while capitalizing on the enhanced fuel and weight savings of a new generation wide based tire.

Line Haul Regional Urban On/Off Road

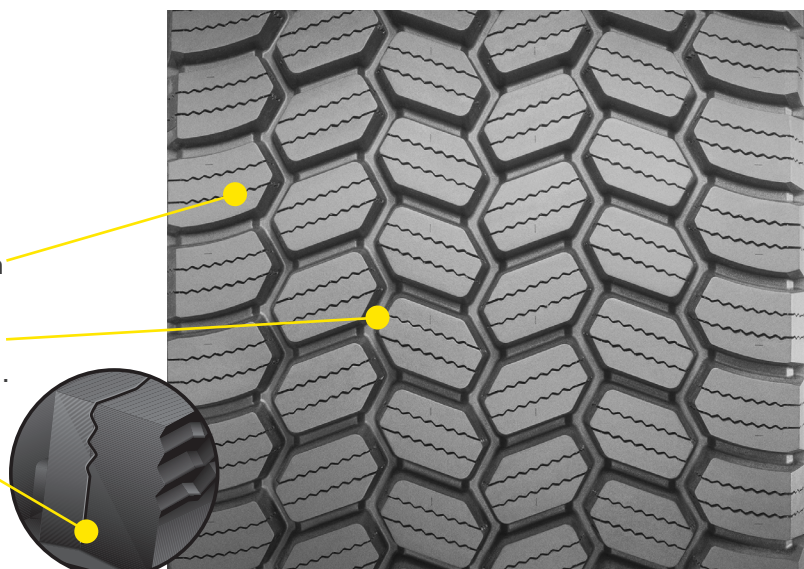
Recommended Acceptable

BENEFITS:

Driver Confidence

Optimized Traction for Snow

- **Matrix Sipes** provides inter-locking action which offers excellent traction and even wear.
- **Zig-Zag Groove Walls** provide optimized biting edges and excellent water and snow evacuation.
- **Full Depth Sipes** provide excellent traction throughout the life of the tread.
- **V-Shaped Transverse Shoulder Grooves** promotes stone, mud, and snow evacuation.



Increased payload ⁽²⁾

The X ONE® advantage with no loss in traction

- Same legendary snow traction as the Michelin XDS®2+ Pre-Mold.⁽¹⁾
- Potential Weight Savings - 365 lbs more payload than dual tires.⁽²⁾

Tread Size	Metric	375/425 ⁽³⁾	385/435 ⁽³⁾
Tread Depth	Metric	20 mm	20 mm
	Inches	25/32"	25/32"

← DIRECTIONAL TIRE



3PMSF (3 Peak Mountain Snow Flake) is from European R117 regulation. It has no regulatory Truck Tire reference in N.A. The tire must score at least 25% better in deep snow traction than the Standard Reference Test Tire on an ECE certified ISO test procedure.

(1) Based on 3PMSF ECE certified ISO test procedure, snow traction results for X ONE® XDS®2 Pre-mold and XDS®2+ Pre-mold duals were statistically equal compared to Standard Reference Test Tire.

(2) Based on replacing eight Michelin XDS®2+ dual retreads on 11R22.5 casings with Alcoa® Ultra ONE® wheels with four Michelin X ONE® XDS®2 retreads on 455/55R22.5 casings with Alcoa® Ultra ONE® Wheels. Actual results may vary.

(3) Tread widths with two measurements have wings. The first number is tread base width in mm. The second number is the overall width, wing tip to tip.

TO FIND OUT MORE
US: business.michelinman.com
CA: business.michelin.ca

FIND US ON FACEBOOK
[michelintruck](https://www.facebook.com/michelintruck)

CONTACT US ON THE WEB
US: business.michelinman.com/contact-us
CA: business.michelin.ca/contact-us

CONTACT US BY TELEPHONE
US: 1-888-622-2306
CA: 1-888-622-2306

Michelin North America Inc., One Parkway South, Greenville, SC 29615
Michelin North America (Canada) Inc., 2500 Daniel Johnson Blvd., Suite 500, Laval (QC) H7T 2P6
Copyright © 2023 MNA(CI). All rights reserved.
Copyright © 2023 Michelin North America, Inc. All rights reserved. An Equal Opportunity Employer PDF Only (05/23)

business.michelinman.com

