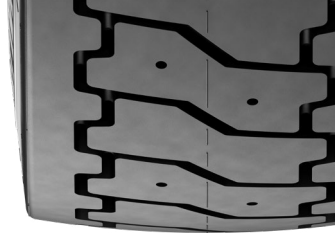


# MICHELIN X STACKER 3 HD

## TECHNICAL CHARACTERISTICS



DESCRIPTION	CAI [MSPN]	Max. dist./ hour km [mile]	e mm [in]	D mm [in]	R' mm [in]	RC mm [in]	Tread depth mm [32rd]	Dual spacing mm [in]	Cap liter [gal]	Measuring recommended rim	Other approved rims
<b>18.00 R 25 X STACKER 3 HD TL 207 A5</b>	397347 -	12 7,5	503 19,8	1659 65,3	740 29,1	4986 196,3	53 67	600 23,6	489 129	13.00/2.5	15.00/2.5

### LOAD CAPACITY BASED ON INFLATION PRESSURE AND SPEED

Bar Psi	6 87	8 116	10 145		
Machine - use kg - lbs	MECHANICAL HANDLING, CYCLIC SERVICE				
<b>STATIC</b>	18380 40528	22280 49127	26250 57881		
<b>&lt;= 10 km/h</b> <b>&lt;= 6 mp/h</b>	15930 35126	19180 42292	22750 50164		
<b>25 km/h</b> <b>12 mp/h</b>	12250 27011	14750 35524	17500 38588		
Machine - use kg - lbs	COUNTERBALANCED LIFT TRUCK, LOAD WHEEL				
<b>&lt;= 10 km/h</b> <b>&lt;= 6 mp/h</b>	15930 35126	19180 42292	22750 50164		
<b>25 km/h</b> <b>15 mp/h</b>	15930 35126	19180 42292	22750 50164		
<b>MOUNTING ACCESSORIES AVAILABLE</b>	<b>Recommended rim</b>	<b>Tubeless bead seal [CAI]</b>	<b>Rubber ring [Michelin Ref./CAI]</b>	<b>Tube [Michelin Ref./CAI]</b>	<b>Flap [CAI]</b>
	13.00/2.5	N/A	OR 3-25 SULLA/553200	25 WAM/101871	16-24/25 (551608)

### LEARN MORE

ON THE WEB  
[business.michelin.co.uk](http://business.michelin.co.uk)

TESTIMONIALS  
[youtube.com](http://youtube.com)

UPDATED APR 2022

### CONTACT

Please contact your local sales representative for more information.

