

MICHELIN CROSSGRIP



**RADIAL
TYRE**

**MULTIPLE PURPOSE
TYRE FOR 4-SEASON USE**



**CONSTRUCTION
SEGMENT**



MICHELIN

MICHELIN CROSSGRIP



1 VERSATILITY

Multi-purpose use for all seasons
Non-directional tread pattern with deep biting tread grooves for multiple applications and special compound designed for 4-season usage

2 ENERGY EFFICIENCY

Maximized handling on hard surface, high speed application
Michelin radial technology with enhanced 4 seasons rubber compound

3 COMFORT

Unmatched handling on hard surfaces and traction on slippery surfaces
Unique tread enhanced positioning, geometry and angles

TYRE CHARACTERISTICS

ADDITIONAL INFORMATION



VEHICLE EQUIPMENTS



A multi-purpose tyre for use on the road, grass and snow with a special rubber formula allowing the tyre to be used all year round

- Michelin Group
Product Manager

LEARN MORE

ON THE WEB
business.michelin.co.uk

TESTIMONIALS
youtube.com

UPDATED JANUARY 2023

TOOLS

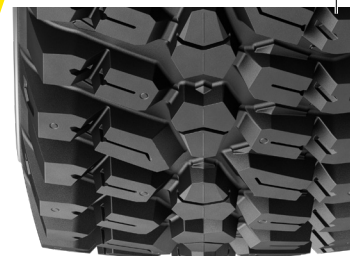
BEYOND ROAD SELECTOR
beyond-road.selector.michelingroup.com/CO

CONTACT

Please contact your local sales representative for more information.



MICHELIN CROSSGRIP



TECHNICAL CHARACTERISTICS

DESCRIPTION	CAI [MSPN]	Max. dist./ hour km [mile]	e mm [in]	D mm [in]	R' mm [in]	RC mm [in]	Tread depth mm [32rd]	Dual spacing mm [in]	75% Internal volume liter [gal]	Measuring recommended rim	Other approved rims <i>See end of document for more options</i>
250/80 R16 124A8/120D IND TL	564847 97221	-	259 10.2	804 31.5	364 14.3	2393 94.2	17 21	352 13.8	48 12.7	W8	W7, W9

Bar	0.80	1.20	1.60	2.00	2.40	2.60	2.80	3.00	3.20	3.40	3.60	3.80	4.00	4.20	4.40
<i>Psi</i>	12	17	23	29	35	38	41	44	46	49	52	55	58	61	64

Machine - use kg - lbs	COMPACT WHEEL LOADER / BACKHOE LOADER / TELEHANDLER														
STAT		1440	1760	2080	2240	2400	2560	2720	2880	3040	3200	3360	3520	3680	
		3175	3880	4585	4940	5290	5645	5995	6350	6700	7055	7410	7760	8115	
10 KM/H CYC. 6 MPH CYC.	940	1150	1355	1460	1565	1670	1770	1875	1980	2085	2190	2295	2400		
	2070	2535	2985	3220	3450	3680	3900	4135	4365	4595	4830	5060	5290		
25 KM/H 15 MPH	625	740	850	1005	1160	1235	1315	1390	1465	1545	1620	1700	1775		
	1380	1630	1875	2215	2555	2725	2900	3065	3230	3405	3570	3750	3915		
30 KM/H 20 MPH	615	720	820	965	1115	1185	1260	1335	1405	1480	1555	1625	1700		
	1355	1585	1810	2125	2460	2610	2780	2945	3095	3265	3430	3585	3750		
40 KM/H 25 MPH	585	680	775	915	1050	1120	1190	1255	1325	1395	1465	1530	1600		
	1290	1500	1710	2015	2315	2470	2625	2765	2920	3075	3230	3375	3525		
50 KM/H 30 MPH	680	775	915	1050	1120	1190	1255	1325	1395	1465	1530	1600			
	1500	1710	2015	2315	2470	2625	2765	2920	3075	3230	3375	3525			
65 KM/H 40 MPH	545	665	790	910	970	1035	1095	1155	1215	1280	1340	1400			
	1200	1465	1740	2005	2140	2280	2415	2545	2680	2820	2955	3085			

340/80 R18 143A8/138D IND TL	698283 31129	-	352 13.9	1000 39.2	452 17.8	2975 117.1	21 26	462 18.1	106 27.9	11	11SDC, 12, 12SDC W10, W11
-------------------------------------	-----------------	---	-------------	--------------	-------------	---------------	----------	-------------	-------------	----	---------------------------------

Bar	0.80	1.20	1.60	2.00	2.40	2.60	2.80	3.00	3.20	3.40	3.60	3.80	4.00	4.20	4.40
<i>Psi</i>	12	17	23	29	35	38	41	44	46	49	52	55	58	61	64

Machine - use kg - lbs	COMPACT WHEEL LOADER / BACKHOE LOADER / TELEHANDLER														
STAT		2450	2995	3540	3815	4090	4360	4635	4905	5180	5455	5725	6000	6270	
		5400	6605	7805	8410	9015	9610	10220	10815	11420	12025	12620	13230	13825	
10 KM/H CYC. 6 MPH CYC.	1600	1955	2310	2490	2670	2845	3025	3200	3380	3555	3735	3915	4090		
	3525	4310	5095	5490	5885	6270	6670	7055	7450	7835	8235	8630	9015		
25 KM/H 15 MPH	1060	1255	1450	1715	1975	2105	2240	2370	2500	2630	2765	2895	3025		
	2335	2765	3195	3780	4355	4640	4940	5225	5510	5800	6095	6380	6670		
30 KM/H 20 MPH	1045	1220	1390	1645	1900	2030	2155	2285	2410	2535	2665	2790	2915		
	2305	2690	3065	3625	4190	4475	4750	5040	5315	5590	5875	6150	6425		
40 KM/H 25 MPH	1000	1160	1320	1550	1780	1895	2010	2125	2240	2360	2485	2605	2725		
	2205	2555	2910	3415	3925	4180	4430	4685	4940	5205	5480	5745	6010		
50 KM/H 30 MPH	1160	1320	1555	1790	1905	2025	2140	2255	2375	2490	2610	2725			
	2555	2910	3430	3945	4200	4465	4720	4970	5235	5490	5755	6010			
65 KM/H 40 MPH	930	1135	1335	1535	1635	1735	1835	1935	2035	2135	2235	2335			
	2050	2500	2945	3385	3605	3825	4045	4265	4485	4705	4925	5150			

IMPORTANT: The inflation pressure is always determined according to the load per tyre, speed and work to be carried out.

Stat: static load at 0 mph., vehicle stationary. 6 mph. Cyc: max. speed 6 mph. with cyclic load. 15, 20, 25, 30 and 40 mph.: use on the road up to 15, 20, 25, 30 and 40 mph.

LEARN MORE

ON THE WEB
business.michelin.co.uk

TESTIMONIALS
youtube.com

UPDATED JANUARY 2023

TOOLS

BEYOND ROAD SELECTOR
beyond-road.selector.michelingroup.com/co

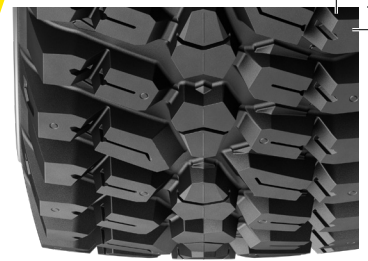
CONTACT

Please contact your local sales representative for more information.



MICHELIN

MICHELIN CROSSGRIP



TECHNICAL CHARACTERISTICS

DESCRIPTION	CAI [MSPN]	Max. dist./ hour km [mile]	e mm [in]	D mm [in]	R' mm [in]	RC mm [in]	Tread depth mm [32rd]	Dual spacing mm [in]	75% Internal volume liter [gal]	Measuring recommended rim	Other approved rims <i>See end of document for more options</i>				
400/70 R20 149A8/144D IND TL	866487	-	403 15.9	1066 41.8	482 19	3169 124.8	24 30	536 21.1	142.5 37.6	DW13	DW13, W13				
Bar	0.80	1.20	1.60	2.00	2.40	2.60	2.80	3.00	3.20	3.40	3.60	3.80	4.00	4.20	4.40
<i>Psi</i>	12	17	23	29	35	38	41	44	46	49	52	55	58	61	64
Machine - use kg - lbs	COMPACT WHEEL LOADER / BACKHOE LOADER / TELEHANDLER														
STAT		2930	3580	4230	4555	4880	5205	5530	5855	6180	6505	6830	7155	7480	
		6460	7895	9325	10040	10760	11475	12190	12910	13625	14340	15060	15775	16490	
10 KM/H CYC.		1910	2335	2760	2970	3180	3395	3605	3820	4030	4245	4455	4670	4880	
<i>6 MPH CYC.</i>		4210	5150	6085	6550	7010	7485	7950	8420	8885	9360	9820	10295	10760	
25 KM/H	1100	1410	1730	2045	2355	2510	2670	2825	2980	3140	3295	3455	3610		
<i>15 MPH</i>	2425	3110	3815	4510	5190	5535	5885	6230	6570	6925	7265	7615	7960		
30 KM/H	1050	1360	1660	1965	2265	2415	2570	2720	2870	3025	3175	3330	3480		
<i>20 MPH</i>	2315	3000	3660	4330	4995	5325	5665	5995	6325	6670	7000	7340	7670		
40 KM/H	990	1270	1550	1825	2100	2240	2375	2515	2650	2800	2950	3100	3250		
<i>25 MPH</i>	2185	2800	3415	4025	4630	4940	5235	5545	5840	6175	6505	6835	7165		
50 KM/H		1270	1550	1825	2100	2240	2375	2515	2650	2800	2950	3100	3250		
<i>30 MPH</i>		2800	3415	4025	4630	4940	5235	5545	5840	6175	6505	6835	7165		
65 KM/H	1100	1350	1595	1840	1960	2080	2205	2325	2445	2565	2680	2800			
<i>40 MPH</i>	2425	2975	3515	4055	4320	4585	4860	5125	5390	5655	5910	6175			
360/80 R24 150A8/145D IND TL	514449 15827	-	365 14.4	1192 46.7	545 21.5	3556 140	26 33	- -	150 39.6	DW12	W11				
Bar	0.80	1.20	1.60	2.00	2.40	2.60	2.80	3.00	3.20	3.40	3.60	3.80	4.00	4.20	4.40
<i>Psi</i>	12	17	23	29	35	38	41	44	46	49	52	55	58	61	64
Machine - use kg - lbs	COMPACT WHEEL LOADER / BACKHOE LOADER / TELEHANDLER														
STAT		3020	3690	4360	4695	5025	5360	5695	6030	6365	6700	7035	7370	7705	
		6660	8135	9610	10350	11080	11815	12555	13295	14030	14770	15510	16250	16985	
10 KM/H CYC.		1970	2405	2840	3060	3280	3495	3715	3930	4150	4370	4590	4805	5025	
<i>6 MPH CYC.</i>		4345	5300	6260	6745	7230	7705	8190	8665	9150	9635	10120	10595	11080	
25 KM/H	1315	1545	1775	2100	2425	2585	2745	2910	3070	3235	3395	3560	3720		
<i>15 MPH</i>	2900	3405	3915	4630	5345	5700	6050	6415	6770	7130	7485	7850	8200		
30 KM/H	1295	1505	1715	2030	2340	2495	2655	2810	2965	3120	3275	3430	3585		
<i>20 MPH</i>	2855	3320	3780	4475	5160	5500	5855	6195	6535	6880	7220	7560	7905		
40 KM/H	1240	1435	1625	1915	2200	2345	2490	2630	2775	2920	3065	3205	3350		
<i>25 MPH</i>	2735	3165	3585	4220	4850	5170	5490	5800	6120	6435	6755	7065	7385		
50 KM/H		1435	1625	1915	2200	2345	2490	2630	2775	2920	3065	3205	3350		
<i>30 MPH</i>		3165	3585	4220	4850	5170	5490	5800	6120	6435	6755	7065	7385		
65 KM/H	1150	1395	1645	1895	2020	2145	2270	2395	2520	2650	2775	2900			
<i>40 MPH</i>	2535	3075	3625	4180	4455	4730	5005	5280	5555	5840	6120	6395			

IMPORTANT: The inflation pressure is always determined according to the load per tyre, speed and work to be carried out.
Stat: static load at 0 mph., vehicle stationary. 6 mph. Cyc: max. speed 6 mph. with cyclic load. 15, 20, 25, 30 and 40 mph.: use on the road up to 15, 20, 25, 30 and 40 mph.

LEARN MORE

ON THE WEB
business.michelin.co.uk

TESTIMONIALS
[youtube.com](https://www.youtube.com)

UPDATED JANUARY 2023

TOOLS

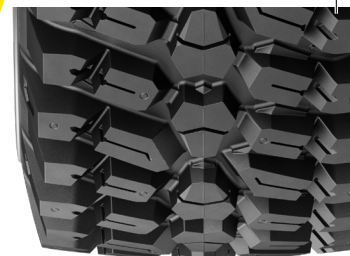
BEYOND ROAD SELECTOR
beyond-road.selector.michelingroup.com/co

CONTACT

Please contact your local sales representative for more information.



MICHELIN CROSSGRIP



TECHNICAL CHARACTERISTICS

DESCRIPTION	CAI [MSPN]	Max. dist./ hour km [mile]	e mm [in]	D mm [in]	R' mm [in]	RC mm [in]	Tread depth mm [32rd]	Dual spacing mm [in]	75% Internal volume liter [gal]	Measuring recommended rim	Other approved rims <i>See end of document for more options</i>				
400/80 R24 156A8/151D IND TL	920345 76135	-	413 16.3	1240 48.6	561 22.1	3689 145.2	26 33	536 21.1	187 49.3	DW13L	DW12, DW14L				
Bar	0.80	1.20	1.60	2.00	2.40	2.60	2.80	3.00	3.20	3.40	3.60	3.80	4.00	4.20	4.40
<i>Psi</i>	12	17	23	29	35	38	41	44	46	49	52	55	58	61	64
Machine - use kg - lbs	COMPACT WHEEL LOADER / BACKHOE LOADER / TELEHANDLER														
STAT		3600	4400	5200	5600	6000	6400	6800	7200	7600	8000	8400	8800	9200	
		7935	9700	11465	12345	13230	14110	14990	15875	16755	17635	18520	19400	20285	
10 KM/H CYC. 6 MPH CYC.		2340	2860	3385	3645	3905	4165	4430	4690	4950	5215	5475	5740	6000	
		5160	6305	7465	8035	8610	9180	9765	10340	10915	11495	12070	12655	13230	
25 KM/H 15 MPH	1550 3415	1835 4045	2120 4675	2450 5400	2775 6120	2940 6480	3100 6835	3265 7200	3430 7560	3665 8080	3905 8610	4140 9125	4375 9645		
30 KM/H 20 MPH	1525 3360	1795 3955	2060 4540	2385 5260	2710 5975	2875 6340	3035 6690	3200 7055	3360 7410	3590 7915	3825 8435	4055 8940	4290 9460		
40 KM/H 25 MPH	1460 3220	1705 3760	1950 4300	2290 5050	2635 5810	2805 6185	2975 6560	3145 6935	3315 7310	3490 7695	3660 8070	3830 8445	4000 8820		
50 KM/H 30 MPH	1705 3760	1950 4300	2290 5050	2635 5810	2805 6185	2975 6560	3145 6935	3315 7310	3490 7695	3660 8070	3830 8445	4000 8820			
65 KM/H 40 MPH	1355 2985	1640 3615	1930 4255	2225 4905	2370 5225	2515 5545	2660 5865	2805 6185	2965 6535	3130 6900	3290 7255	3450 7605			
440/80 R24 161A8/156D IND TL	131846 74806	-	447 17.8	1314 51.5	592 23.3	3906 153.8	26 33	580 22.8	234 61.8	DW14	14, DW15L				
Bar	0.80	1.20	1.60	2.00	2.40	2.60	2.80	3.00	3.20	3.40	3.60	3.80	4.00	4.20	4.40
<i>Psi</i>	12	17	23	29	35	38	41	44	46	49	52	55	58	61	64
Machine - use kg - lbs	COMPACT WHEEL LOADER / BACKHOE LOADER / TELEHANDLER														
STAT		4160	5085	6010	6475	6940	7400	7865	8325	8790	9255	9715	10180	10640	
		9170	11210	13250	14275	15300	16315	17340	18355	19380	20405	21420	22445	23455	
10 KM/H CYC. 6 MPH CYC.		2710	3315	3920	4220	4525	4825	5125	5430	5730	6035	6335	6640	6940	
		5975	7310	8640	9305	9975	10635	11300	11970	12630	13305	13965	14640	15300	
25 KM/H 15 MPH	1800 3970	2130 4695	2460 5425	2905 6405	3350 7385	3575 7880	3795 8365	4020 8865	4240 9350	4465 9845	4685 10330	4910 10825	5130 11310		
30 KM/H 20 MPH	1770 3900	2070 4565	2370 5225	2800 6175	3230 7120	3445 7595	3660 8070	3875 8545	4090 9015	4305 9490	4520 9965	4735 10440	4950 10915		
40 KM/H 25 MPH	1700 3750	1970 4345	2240 4940	2640 5820	3035 6690	3235 7130	3435 7575	3630 8005	3830 8445	4030 8885	4230 9325	4425 9755	4625 10195		
50 KM/H 30 MPH	1970 4345	2240 4940	2640 5820	3035 6690	3235 7130	3435 7575	3630 8005	3830 8445	4030 8885	4230 9325	4425 9755	4625 10195			
65 KM/H 40 MPH	1575 3470	1880 4145	2235 4925	2585 5700	2765 6095	2940 6480	3115 6865	3295 7265	3470 7650	3645 8035	3825 8435	4000 8820			

IMPORTANT: The inflation pressure is always determined according to the load per tyre, speed and work to be carried out.
Stat: static load at 0 mph., vehicle stationary. 6 mph. Cyc: max. speed 6 mph. with cyclic load. 15, 20, 25, 30 and 40 mph.: use on the road up to 15, 20, 25, 30 and 40 mph.

LEARN MORE

ON THE WEB
business.michelin.co.uk

TESTIMONIALS
[youtube.com](https://www.youtube.com)

UPDATED JANUARY 2023

TOOLS

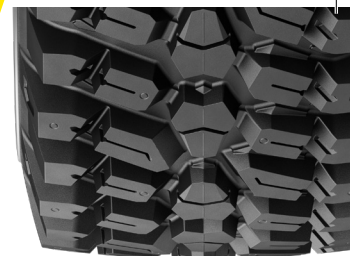
BEYOND ROAD SELECTOR
beyond-road.selector.michelingroup.com/co

CONTACT

Please contact your local sales representative for more information.



MICHELIN CROSSGRIP



TECHNICAL CHARACTERISTICS

DESCRIPTION	CAI [MSPN]	Max. dist./ hour km [mile]	e mm [in]	D mm [in]	R' mm [in]	RC mm [in]	Tread depth mm [32rd]	Dual spacing mm [in]	75% Internal volume liter [gal]	Measuring recommended rim	Other approved rims <i>See end of document for more options</i>				
460/70 R24 159A8/154D IND TL	304047 11050	-	475 18.7	1246 48.9	564 22.2	3708 146	26 33	597 23.5	217 57.4	DW15L	14, 16, DW14L, DW16A, TW14L				
Bar	0.80	1.20	1.60	2.00	2.40	2.60	2.80	3.00	3.20	3.40	3.60	3.80	4.00	4.20	4.40
<i>Psi</i>	12	17	23	29	35	38	41	44	46	49	52	55	58	61	64
Machine - use kg - lbs	COMPACT WHEEL LOADER / BACKHOE LOADER / TELEHANDLER														
STAT		3940	4815	5690	6125	6560	7000	7435	7875	8310	8750	9185	9625	10060	
		8685	10615	12545	13505	14460	15430	16390	17360	18320	19290	20250	21220	22180	
10 KM/H CYC. 6 MPH CYC.		2570	3140	3710	3995	4280	4565	4850	5135	5420	5705	5990	6275	6560	
		5665	6925	8180	8805	9435	10065	10690	11320	11950	12575	13205	13835	14460	
25 KM/H 15 MPH	1715	2020	2320	2745	3165	3375	3585	3800	4010	4225	4435	4650	4860		
	3780	4455	5115	6050	6980	7440	7905	8380	8840	9315	9780	10250	10715		
30 KM/H 20 MPH	1685	1965	2240	2650	3055	3260	3460	3665	3870	4075	4275	4480	4680		
	3715	4330	4940	5840	6735	7185	7630	8080	8530	8985	9425	9875	10320		
40 KM/H 25 MPH	1615	1870	2120	2495	2870	3060	3250	3435	3625	3810	4000	4185	4375		
	3560	4125	4675	5500	6325	6745	7165	7575	7990	8400	8820	9225	9645		
50 KM/H 30 MPH	1870	2120	2495	2870	3060	3250	3435	3625	3810	4000	4185	4375			
	4125	4675	5500	6325	6745	7165	7575	7990	8400	8820	9225	9645			
65 KM/H 40 MPH	1500	1820	2140	2465	2625	2785	2945	3105	3270	3430	3590	3750			
	3305	4010	4720	5435	5785	6140	6495	6845	7210	7560	7915	8265			
500/70 R24 164A8/159D IND TL	875270 63574	-	513 20.2	1292 50.7	579 22.8	3836 151	26 33	654 25.7	264 69.7	DW16A	DW15L, DW16L, TW16L				
Bar	0.80	1.20	1.60	2.00	2.40	2.60	2.80	3.00	3.20	3.40	3.60	3.80	4.00	4.20	4.40
<i>Psi</i>	12	17	23	29	35	38	41	44	46	49	52	55	58	61	64
Machine - use kg - lbs	COMPACT WHEEL LOADER / BACKHOE LOADER / TELEHANDLER														
STAT		4505	5505	6500	7000	7500	8000	8495	8995	9495	9995	10495	10995	11495	
		9930	12135	14330	15430	16535	17635	18730	19830	20935	22035	23140	24240	25340	
10 KM/H CYC. 6 MPH CYC.		2935	3585	4240	4565	4890	5215	5545	5870	6195	6520	6845	7170	7495	
		6470	7905	9350	10065	10780	11495	12225	12940	13660	14375	15090	15805	16525	
25 KM/H 15 MPH	1950	2300	2650	3135	3620	3860	4100	4345	4585	4830	5070	5315	5555		
	4300	5070	5840	6910	7980	8510	9040	9580	10110	10650	11175	11720	12245		
30 KM/H 20 MPH	1920	2240	2560	3025	3495	3725	3960	4190	4425	4655	4890	5120	5350		
	4235	4940	5645	6670	7705	8210	8730	9235	9755	10265	10780	11290	11795		
40 KM/H 25 MPH	1840	2135	2425	2855	3285	3500	3715	3925	4140	4355	4570	4785	5000		
	4055	4705	5345	6295	7240	7715	8190	8655	9125	9600	10075	10550	11025		
50 KM/H 30 MPH	2135	2425	2855	3285	3500	3715	3925	4140	4355	4570	4785	5000			
	4705	5345	6295	7240	7715	8190	8655	9125	9600	10075	10550	11025			
65 KM/H 40 MPH	1710	2080	2450	2815	3000	3185	3365	3550	3735	3920	4100	4285			
	3770	4585	5400	6205	6615	7020	7420	7825	8235	8640	9040	9445			

IMPORTANT: The inflation pressure is always determined according to the load per tyre, speed and work to be carried out.
Stat: static load at 0 mph., vehicle stationary. 6 mph. Cyc: max. speed 6 mph. with cyclic load. 15, 20, 25, 30 and 40 mph.: use on the road up to 15, 20, 25, 30 and 40 mph.

LEARN MORE

ON THE WEB
business.michelin.co.uk

TESTIMONIALS
youtube.com

UPDATED JANUARY 2023

TOOLS

BEYOND ROAD SELECTOR
beyond-road.selector.michelingroup.com/co

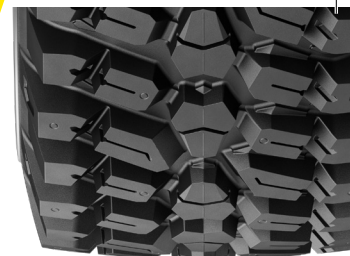
CONTACT

Please contact your local sales representative for more information.



MICHELIN

MICHELIN CROSSGRIP



TECHNICAL CHARACTERISTICS

DESCRIPTION	CAI [MSPN]	Max. dist./ hour km [mile]	e mm [in]	D mm [in]	R' mm [in]	RC mm [in]	Tread depth mm [32rd]	Dual spacing mm [in]	75% Internal volume liter [gal]	Measuring recommended rim	Other approved rims <i>See end of document for more options</i>				
430/80 R26 167A8/162D IND TL	427974	-	503 19.8	1423 55.8	643 25.3	4234 166.7	25 31	626 24.6	302.2 79.8	DW16A	DW15L				
Bar	0.80	1.20	1.60	2.00	2.40	2.60	2.80	3.00	3.20	3.40	3.60	3.80	4.00	4.20	4.40
<i>Psi</i>	12	17	23	29	35	38	41	44	46	49	52	55	58	61	64
Machine - use kg - lbs	COMPACT WHEEL LOADER / BACKHOE LOADER / TELEHANDLER														
STAT		4900 10805	5990 13205	7080 15610	7625 16810	8170 18010	8715 19215	9260 20415	9805 21615	10350 22820	10895 24020	11440 25220	11985 26420	12530 27625	
10 KM/H CYC. 6 MPH CYC.		3200 7055	3910 8620	4620 10185	4975 10970	5330 11750	5685 12535	6040 13315	6395 14100	6750 14880	7105 15665	7460 16445	7815 17230	8170 18010	
25 KM/H 15 MPH	1840 4055	2370 5225	2890 6370	3420 7540	3945 8695	4210 9280	4475 9865	4735 10440	5000 11025	5265 11605	5525 12180	5790 12765	6050 13340		
30 KM/H 20 MPH	1770 3900	2280 5025	2790 6150	3300 7275	3805 8390	4060 8950	4315 9515	4565 10065	4820 10625	5075 11190	5330 11750	5580 12300	5835 12865		
40 KM/H 25 MPH	1660 3660	2130 4695	2575 5675	3055 6735	3540 7805	3780 8335	4020 8865	4260 9390	4500 9920	4740 10450	4975 10970	5215 11495	5450 12015		
50 KM/H 30 MPH		2130 4695	2640 5820	3120 6880	3595 7925	3835 8455	4070 8975	4310 9500	4550 10030	4775 10525	5000 11025	5225 11520	5450 12015		
65 KM/H 40 MPH		1850 4695	2270 5005	2680 5910	3085 6800	3290 7255	3490 7695	3695 8145	3900 8600	4115 9070	4325 9535	4540 10010	4750 10470		
400/80 R28 158A8/153D IND TL	219659 38141	-	412 16.2	1354 53.1	616 24.3	4034 158.8	26 33	536 21.1	159 42	DW13	DW11, W12, W13				
Bar	0.80	1.20	1.60	2.00	2.40	2.60	2.80	3.00	3.20	3.40	3.60	3.80	4.00	4.20	4.40
<i>Psi</i>	12	17	23	29	35	38	41	44	46	49	52	55	58	61	64
Machine - use kg - lbs	COMPACT WHEEL LOADER / BACKHOE LOADER / TELEHANDLER														
STAT		3830 8445	4680 10320	5530 12190	5955 13130	6375 14055	6800 14990	7225 15930	7650 16865	8075 17800	8500 18740	8925 19675	9350 20615	9775 21550	
10 KM/H CYC. 6 MPH CYC.		2500 5510	3055 6735	3605 7950	3885 8565	4160 9170	4435 9780	4710 10385	4990 11000	5265 11605	5545 12225	5820 12830	6100 13450	6375 14055	
25 KM/H 15 MPH	1660 3660	1960 4320	2255 4970	2665 5875	3075 6780	3280 7230	3485 7685	3690 8135	3895 8585	4100 9040	4310 9500	4515 9955	4720 10405		
30 KM/H 20 MPH	1635 3605	1905 4200	2175 4795	2570 5665	2970 6550	3165 6980	3365 7420	3560 7850	3760 8290	3955 8720	4155 9160	4350 9590	4545 10020		
40 KM/H 25 MPH	1565 3450	1815 4000	2060 4540	2425 5345	2790 6150	2975 6560	3155 6955	3340 7365	3520 7760	3705 8170	3885 8565	4070 8975	4250 9370		
50 KM/H 30 MPH		1815 4000	2060 4540	2425 5345	2790 6150	2975 6560	3155 6955	3340 7365	3520 7760	3705 8170	3885 8565	4070 8975	4250 9370		
65 KM/H 40 MPH		1455 3210	1770 3900	2085 4595	2395 5280	2550 5620	2710 5975	2865 6315	3020 6660	3175 7000	3335 7350	3490 7695	3645 8035		

IMPORTANT: The inflation pressure is always determined according to the load per tyre, speed and work to be carried out.
Stat: static load at 0 mph., vehicle stationary. 6 mph. Cyc: max. speed 6 mph. with cyclic load. 15, 20, 25, 30 and 40 mph.: use on the road up to 15, 20, 25, 30 and 40 mph.

LEARN MORE

ON THE WEB
business.michelin.co.uk

TESTIMONIALS
youtube.com

UPDATED JANUARY 2023

TOOLS

BEYOND ROAD SELECTOR
beyond-road.selector.michelingroup.com/co

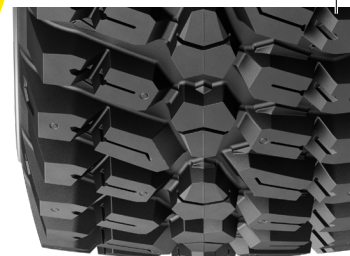
CONTACT

Please contact your local sales representative for more information.



MICHELIN

MICHELIN CROSSGRIP



TECHNICAL CHARACTERISTICS

DESCRIPTION	CAI [MSPN]	Max. dist./ hour km [mile]	e mm [in]	D mm [in]	R' mm [in]	RC mm [in]	Tread depth mm [32rd]	Dual spacing mm [in]	75% Internal volume liter [gal]	Measuring recommended rim	Other approved rims See end of document for more options
440/80 R28 163A8/158D IND TL	439765 52613	-	450 17.5	1410 55.3	635 25	4197 165.2	26 33	580 22.8	259 68.3	DW14L	DW15L

Bar	0.80	1.20	1.60	2.00	2.40	2.60	2.80	3.00	3.20	3.40	3.60	3.80	4.00	4.20	4.40
Psi	12	17	23	29	35	38	41	44	46	49	52	55	58	61	64

Machine - use kg - lbs	COMPACT WHEEL LOADER / BACKHOE LOADER / TELEHANDLER														
STAT		4370	5485	6605	7165	7720	8280	8840	9395	9955	10515	11075	11630	12190	
		9635	12090	14560	15795	17020	18255	19490	20710	21945	23180	24415	25640	26875	
10 KM/H CYC. 6 MPH CYC.		2850	3700	4550	4975	5400	5825	6250	6675	7100	7525	7950			
		6285	8155	10030	10970	11905	12840	13780	14715	15655	16590	17525			
25 KM/H 15 MPH	1925	2275	2620	3090	3565	3800	4035	4270	4505	4730	4960	5185	5410		
	4245	5015	5775	6810	7860	8380	8895	9415	9930	10430	10935	11430	11925		
30 KM/H 20 MPH	1895	2210	2525	2975	3425	3645	3870	4095	4320	4545	4770	4990	5215		
	4180	4870	5565	6560	7550	8035	8530	9030	9525	10020	10515	11000	11495		
40 KM/H 25 MPH	1815	2090	2360	2780	3200	3410	3620	3825	4035	4245	4455	4665	4875		
	4000	4610	5205	6130	7055	7520	7980	8435	8895	9360	9820	10285	10750		
50 KM/H 30 MPH		2090	2360	2780	3200	3410	3620	3825	4035	4245	4455	4665	4875		
		4610	5205	6130	7055	7520	7980	8435	8895	9360	9820	10285	10750		
65 KM/H 40 MPH		1685	2035	2405	2775	2960	3145	3325	3510	3695	3880	4065	4250		
		3715	4485	5300	6120	6525	6935	7330	7740	8145	8555	8960	9370		

DESCRIPTION	CAI [MSPN]	Max. dist./ hour km [mile]	e mm [in]	D mm [in]	R' mm [in]	RC mm [in]	Tread depth mm [32rd]	Dual spacing mm [in]	75% Internal volume liter [gal]	Measuring recommended rim	Other approved rims See end of document for more options
440/80 R34 159A8/155D IND TL	967528 20271	-	431 17	1580 62	718 28.3	4706 185.3	28 35	- -	295 78	DW14L	DW15L, DW16L

Bar	0.80	1.20	1.60	2.00	2.40	2.60	2.80	3.00	3.20	3.40	3.60	3.80	4.00	4.20	4.40
Psi	12	17	23	29	35	38	41	44	46	49	52	55	58	61	64

Machine - use kg - lbs	COMPACT WHEEL LOADER / BACKHOE LOADER / TELEHANDLER														
STAT		5925	6930	7935	8470	9000	9535	10065	10640	11215					
		13060	15280	17495	18675	19840	21020	22190	23455	24725					
10 KM/H CYC. 6 MPH CYC.		3270	3945	4615	4940	5265	5590	5915	6240	6565					
		7210	8695	10175	10890	11605	12325	13040	13755	14475					
25 KM/H 15 MPH	2105	2420	2730	3195	3655	3905	4150	4395	4640						
	4640	5335	6020	7045	8060	8610	9150	9690	10230						
30 KM/H 20 MPH	2070	2375	2680	3135	3590	3830	4070	4310	4550						
	4565	5235	5910	6910	7915	8445	8975	9500	10030						
40 KM/H 25 MPH	1985	2280	2575	3015	3450	3685	3915	4145	4375						
	4375	5025	5675	6645	7605	8125	8630	9140	9645						
50 KM/H 30 MPH		2280	2575	3015	3450	3680	3910	4145	4375						
		5025	5675	6645	7605	8115	8620	9140	9645						
65 KM/H 40 MPH		1845	2255	2650	3045	3255	3460	3670	3875						
		4070	4970	5840	6715	7175	7630	8090	8545						

IMPORTANT: The inflation pressure is always determined according to the load per tyre, speed and work to be carried out.
Stat: static load at 0 mph., vehicle stationary. 6 mph. Cyc: max. speed 6 mph. with cyclic load. 15, 20, 25, 30 and 40 mph.: use on the road up to 15, 20, 25, 30 and 40 mph.

LEARN MORE

ON THE WEB
business.michelin.co.uk

TESTIMONIALS
[youtube.com](https://www.youtube.com)

UPDATED JANUARY 2023

TOOLS

BEYOND ROAD SELECTOR
beyond-road.selector.michelingroup.com/co

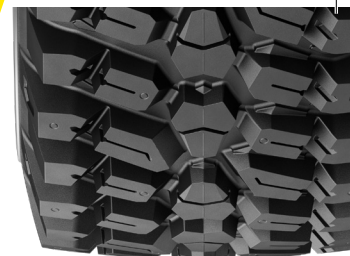
CONTACT

Please contact your local sales representative for more information.



MICHELIN

MICHELIN CROSSGRIP



TECHNICAL CHARACTERISTICS

DESCRIPTION	CAI [MSPN]	Max. dist./ hour km [mile]	e mm [in]	D mm [in]	R' mm [in]	RC mm [in]	Tread depth mm [32rd]	Dual spacing mm [in]	75% Internal volume liter [gal]	Measuring recommended rim	Other approved rims <i>See end of document for more options</i>
480/80 R34 164A8/159D IND TL	333253 56587	-	477 18.8	1648 64.6	743 29.3	4900 192.9	28 35	- -	361 95.5	DW15L	DW16L, DW18L

Bar Psi	0.80 12	1.20 17	1.60 23	2.00 29	2.40 35	2.60 38	2.80 41	3.00 44	3.20 46	3.40 49	3.60 52	3.80 55	4.00 58	4.20 61	4.40 64
------------	------------	------------	------------	------------	------------	------------	------------	------------	------------	------------	------------	------------	------------	------------	------------

Machine - use
kg - lbs

COMPACT WHEEL LOADER / BACKHOE LOADER / TELEHANDLER

STAT			6670 14705	7935 17495	9200 20285	9775 21550	10350 22820	10925 24085	11500 25355	12190 26875	12880 28395				
10 KM/H CYC. 6 MPH CYC.			3645 8035	4485 9890	5325 11740	5690 12545	6050 13340	6415 14145	6775 14935	7140 15740	7500 16535				
25 KM/H 15 MPH	2405 5300	2740 6040	3075 6780	3660 8070	4240 9350	4505 9930	4770 10515	5035 11100	5300 11685						
30 KM/H 20 MPH	2370 5225	2695 5940	3015 6645	3590 7915	4160 9170	4420 9745	4680 10320	4940 10890	5200 11465						
40 KM/H 25 MPH	2270 5005	2585 5700	2900 6395	3450 7605	4000 8820	4250 9370	4500 9920	4750 10470	5000 11025						
50 KM/H 30 MPH		2585 5700	2900 6395	3450 7605	4000 8820	4250 9370	4500 9920	4750 10470	5000 11025						
65 KM/H 40 MPH		2105 4640	2540 5600	3020 6660	3500 7715	3720 8200	3940 8685	4155 9160	4375 9645						

480/80 R38 166A8/161D IND TL	846732 06819	-	478 18.8	1757 68.9	791 31.1	5293 208.4	29 37	626 24.6	416 109.9	DW15L	DW16L, DW18L
-------------------------------------	------------------------	---	--------------------	---------------------	--------------------	----------------------	-----------------	--------------------	---------------------	--------------	---------------------

Bar Psi	0.80 12	1.20 17	1.60 23	2.00 29	2.40 35	2.60 38	2.80 41	3.00 44	3.20 46	3.40 49	3.60 52	3.80 55	4.00 58	4.20 61	4.40 64
------------	------------	------------	------------	------------	------------	------------	------------	------------	------------	------------	------------	------------	------------	------------	------------

Machine - use
kg - lbs

COMPACT WHEEL LOADER / BACKHOE LOADER / TELEHANDLER

STAT			5925 13060	7275 16040	8625 19015	9220 20325	9815 21640	10410 22950	11000 24250	11595 25565	12190 26875				
10 KM/H CYC. 6 MPH CYC.			3865 8520	4745 10460	5625 12400	6015 13260	6400 14110	6790 14970	7175 15820	7565 16680	7950 17525				
25 KM/H 15 MPH	2535 5590	2900 6395	3260 7185	3885 8565	4505 9930	4785 10550	5065 11165	5340 11775	5620 12390						
30 KM/H 20 MPH	2495 5500	2850 6285	3200 7055	3810 8400	4420 9745	4695 10350	4965 10945	5240 11550	5510 12145						
40 KM/H 25 MPH	2390 5270	2735 6030	3075 6780	3630 8005	4190 9235	4465 9845	4745 10460	5020 11065	5300 11685						
50 KM/H 30 MPH		2735 6030	3075 6780	3630 8005	4190 9235	4465 9845	4745 10460	5020 11065	5300 11685						
65 KM/H 40 MPH		2220 4895	2690 5930	3175 7000	3660 8070	3900 8600	4140 9125	4385 9665	4625 10195						

IMPORTANT: The inflation pressure is always determined according to the load per tyre, speed and work to be carried out.

Stat: static load at 0 mph., vehicle stationary. 6 mph. Cyc: max. speed 6 mph. with cyclic load. 15, 20, 25, 30 and 40 mph.: use on the road up to 15, 20, 25, 30 and 40 mph.

LEARN MORE

ON THE WEB
business.michelin.co.uk

TESTIMONIALS
youtube.com

UPDATED JANUARY 2023

TOOLS

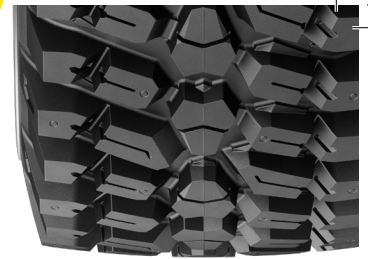
BEYOND ROAD SELECTOR
beyond-road.selector.michelingroup.com/co

CONTACT

Please contact your local sales representative for more information.



MICHELIN CROSSGRIP



TECHNICAL CHARACTERISTICS

DESCRIPTION	CAI [MSPN]	Max. dist./ hour km [mile]	e mm [in]	D mm [in]	R' mm [in]	RC mm [in]	Tread depth mm [32rd]	Dual spacing mm [in]	75% Internal volume liter [gal]	Measuring recommended rim	Other approved rims <i>See end of document for more options</i>				
540/80 R38 172A8/167D IND TL	567367 65312	-	561 22.1	1856 72.8	832 32.8	5511 217	28 35	699 27.5	523 138.3	DW18L	DW16L				
Bar	0.80	1.20	1.60	2.00	2.40	2.60	2.80	3.00	3.20	3.40	3.60	3.80	4.00	4.20	4.40
<i>Psi</i>	12	17	23	29	35	38	41	44	46	49	52	55	58	61	64
Machine - use kg - lbs	COMPACT WHEEL LOADER / BACKHOE LOADER / TELEHANDLER														
STAT		10345	11220	12090	12690	13290	13890	14490	15370	16250					
		22805	24735	26655	27975	29300	30620	31945	33885	35825					
10 KM/H CYC.		6765	7340	7910	8290	8670	9050	9430	10030	10630					
<i>6 MPH CYC.</i>		14915	16180	17440	18275	19115	19950	20790	22110	23435					
25 KM/H	3035	3905	4770	5175	5575	5845	6115	6380	6650						
<i>15 MPH</i>	6690	8610	10515	11410	12290	12885	13480	14065	14660						
30 KM/H	2985	3840	4695	5090	5485	5750	6015	6275	6540						
<i>20 MPH</i>	6580	8465	10350	11220	12090	12675	13260	13835	14420						
40 KM/H	2860	3680	4500	4950	5400	5625	5850	6075	6300						
<i>25 MPH</i>	6305	8115	9920	10915	11905	12400	12895	13395	13890						
50 KM/H	3455	4225	4640	5055	5265	5470	5680	5885							
<i>30 MPH</i>	7615	9315	10230	11145	11605	12060	12520	12975							
65 KM/H	3200	3910	4295	4680	4875	5065	5260	5450							
<i>40 MPH</i>	7055	8620	9470	10320	10750	11165	11595	12015							

IMPORTANT: The inflation pressure is always determined according to the load per tyre, speed and work to be carried out.
Stat: static load at 0 mph., vehicle stationary. 6 mph. Cyc: max. speed 6 mph. with cyclic load. 15, 20, 25, 30 and 40 mph.: use on the road up to 15, 20, 25, 30 and 40 mph.

LEARN MORE

ON THE WEB
business.michelin.co.uk

TESTIMONIALS
youtube.com

UPDATED JANUARY 2023

TOOLS

BEYOND ROAD SELECTOR
beyond-road.selector.michelingroup.com/co

CONTACT

Please contact your local sales representative for more information.



MICHELIN