

MICHELIN® XTS

**FOR MEDIUM POWERED SCRAPERS
IN APPLICATIONS REQUIRING MAXIMUM TRACTION**



XTS E3T ** 29.5 R 29 TUBELESS

XTS E3T ** 33.25 R 29 TUBELESS

XTS E3T ** 29.5 R 35 TUBELESS

XTS E3T ** 37.25 R 35 TUBELESS



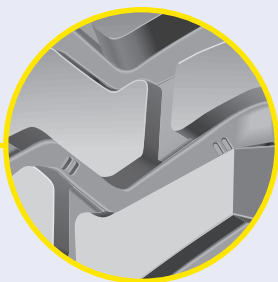
ARTICULATED DUMP TRUCKS AND SCRAPERS



**FOR MEDIUM POWERED SCRAPERS
IN APPLICATIONS REQUIRING MAXIMUM TRACTION**



ARTICULATED DUMP TRUCKS AND SCRAPERS



■ **IMPROVED DURABILITY**

**BETTER RESISTANCE
TO DAMAGE
AND ABRASION**

Square shoulders and protective
sidewall bands



■ **INCREASED TRACTION AND ADHESION**

**SELF CLEANING
TREAD PATTERN**

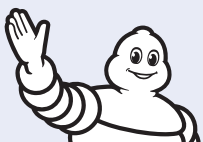
Open tread design with widely
spaced tread blocks



■ **EXTENDED LIFE**

**IMPROVED
WEAR RATE**

Extra deep tread composed
of special new rubber compounds





MICHELIN TECHNICAL DATA

COMMERCIAL DESCRIPTION	CAI MSPN	Max. dist. / hour km mile	TKPH (1) TMPH	e mm inch	D mm inch	R' mm inch	RC mm inch	Tread depth mm 32rd	Dual Spacing mm inch	Cap liter gallon	Measuring Recommended Rim (1)	Other Approved Rims (1)
XTS E3T ** 29.5 R 29 Tubeless	708648 46731	29 18	348 238	765 30.1	1963 77.3	869 34.2	5884 231.7	43 54.2		1300 343.5	25.00/3.5	24.00/3.5

Bar	2	2.5	3	3.5	4	4.25	4.5	4.5	5	5.5		
<i>Psi</i>	29	36	44	51	58	62	65	65	73	80		

Machine - Use (kg - lb)	TRANSPORT											
STANDARD	9150 20176	10325 22767	11500 25358	12650 27893	13850 30539	14425 31807	15000 33075	16150 35611	16750 36934			

XTS E3T ** 33.25 R 29 Tubeless	871916 76725	29 18	429 294	873 34.4	2068 81.4	923 36.3	6218 244.8	51 64.3		1640 433.3	27.00/3.5	
--	------------------------	-----------------	-------------------	--------------------	---------------------	--------------------	----------------------	-------------------	--	----------------------	-----------	--

Bar	2	2.5	3	3.5	4	4.25	4.5	4.5	5	5.5	6	
<i>Psi</i>	29	36	44	51	58	62	65	65	73	80	87	

Machine - Use (kg - lb)	TRANSPORT											
STANDARD	9500 20948	11000 24255	12500 27563	14000 30870	15500 34178	16300 35942	17000 37485	18500 40793	19250 42446	20000 44100		

XTS E3T ** 29.5 R 35 Tubeless	631225 64173	29 18	371 254	777 30.6	2116 83.3	943 37.1	6539 257.4	45 56.7		1494 394.7	25.00/3.5	27.00/3.5
---	------------------------	-----------------	-------------------	--------------------	---------------------	--------------------	----------------------	-------------------	--	----------------------	-----------	-----------

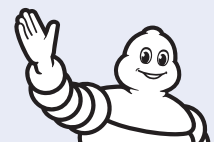
Bar	3.5	3.75	4	4.25	4.5	5	5.5	5.5	6	6.5		
<i>Psi</i>	51	54	58	62	65	73	73	80	87	94		

Machine - Use (kg - lb)	TRANSPORT											
STANDARD	13200 29106	13900 30650	14600 32193	15300 33737	16000 35280	17400 38367	18100 39911					

XTS E3T ** 37.25 R 35 Tubeless	540244 54190	29 18	540 370	956 37.6	2370 93.3	1070 42.1	7157 281.8	59 74.3		2400 634.1	31.00/4.0	29.00/3.5
--	------------------------	-----------------	-------------------	--------------------	---------------------	---------------------	----------------------	-------------------	--	----------------------	-----------	-----------

Bar	3.75	4	4.25	4.5	5	5.5	5.5	6	6.5	6.5		
<i>Psi</i>	54	58	62	65	73	73	80	87	94	94		

Machine - Use (kg - lb)	TRANSPORT											
STANDARD	17950 39580	18500 40793	19350 42667	20200 44541	21900 48290	23600 52038	24450 53912	25300 55787				



MICHELIN

(1) More informations in the Michelin Databook 2019.



OUR WEBSITE
business.michelin.uk



TESTIMONIALS
YouTube channel



PRESSURE ADVISOR
pressureadvisor.michelinearthmover.com

AUTHORIZED DISTRIBUTOR: