

MICHELIN XTLA

An L2/G2 tyre for wide-ranging use on yielding terrain

Exceptional traction

Life

Adhesion



MICHELIN XTLA

An L2/G2 tyre for wide-ranging use on yielding terrain

SIZES	TREAD DEPTH	
	mm	32 nd inch
15.5 R 25 TL *	25	31,5
17.5 R 25 TL *	28	35,3
20.5 R 25 TL *	31	39,1
23.5 R 25 TL *	34	42,8

➤ EXCEPTIONAL TRACTION

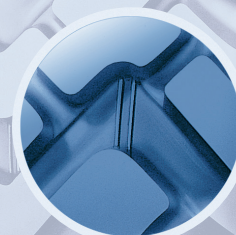
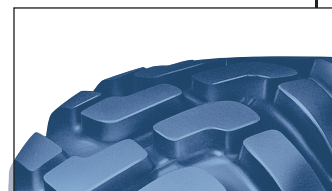
■ A non directional, aggressive tread with distinct, well defined lugs, produces exceptional traction and stability on yielding terrain

➤ LIFE

- An open block pattern and large contact area guarantees regular tread wear
- The design of the shoulder/sidewall intersection offers improved damage resistance

➤ ADHESION

- A well defined block pattern with a high void to block ratio assures an excellent level of adhesion



Measuring point location

REPAIRABILITY AND RETREADABILITY MAXIMIZED THANKS TO THE EXTREME RELIABILITY OF THE CASING (##)

(##) provided that the worn tyre answers criteria of retreading and/or repair.

BENEFITS OF THE MICHELIN® RADIAL TECHNIQUE

- longer tyre life
- better traction on all types of surface
- lower fuel consumption
- improved comfort
- increased resistance to punctures / flats
- increased heat resistance

