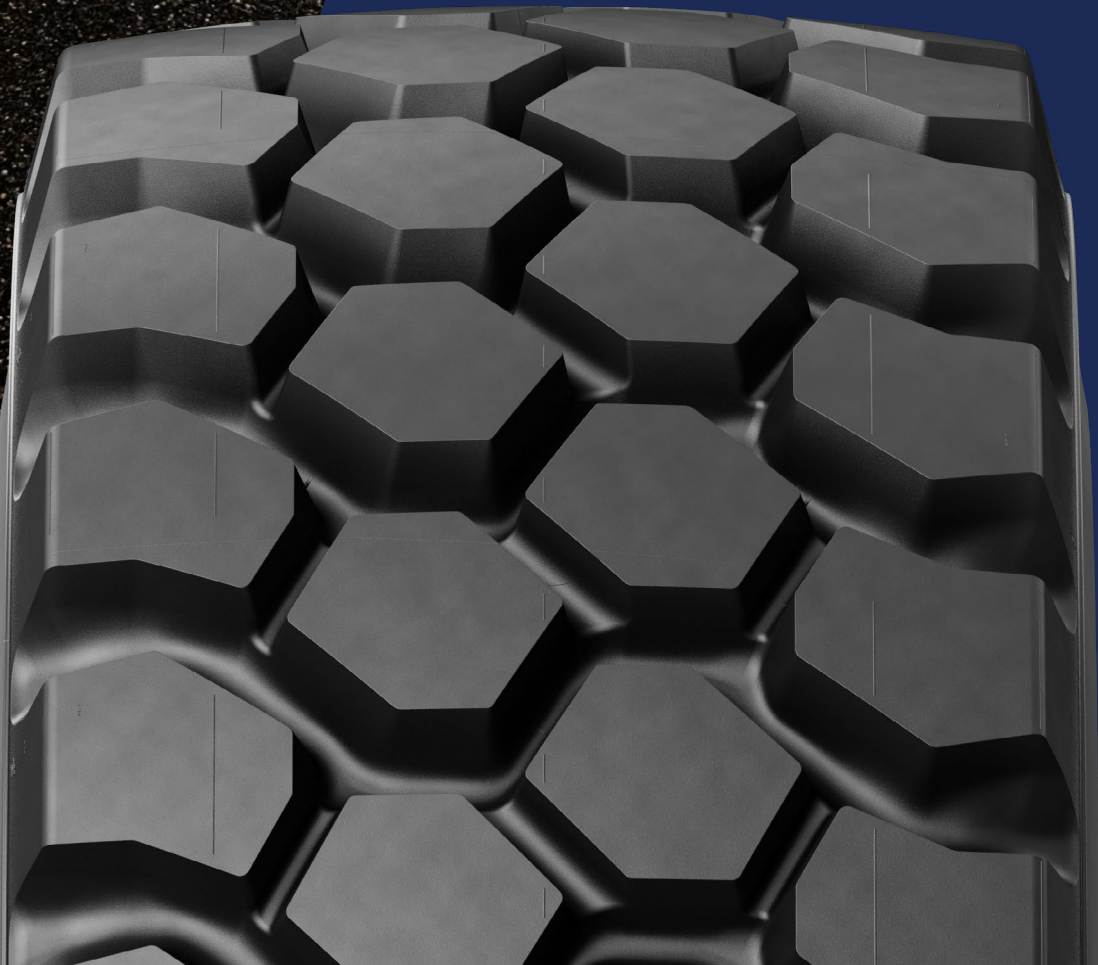


MICHELIN **XTRA DEFEND**



RADIAL
TIRE

DESIGNED
TO RESIST



CONSTRUCTION
SEGMENT



MICHELIN

MICHELIN XTRA DEFEND



1 ROBUSTNESS

The best resistance to aggression offer for Michelin ADT machine 24,7%⁽¹⁾ more mass metal +15%⁽²⁾ more sidewall thickness

2 TRACTION

Innovated XTRA DEFEND sculpture
The best sculpture (E4) to bring a high longevity during highest cycle solicitation

3 TREADLIFE

Extra Deep tread thickness B4 compound for advanced wear resistant
Lower heat generation rubber for a higher mileage on the field

TIRE CHARACTERISTICS

ADDITIONAL INFORMATION



VEHICLE EQUIPMENT



XTRA DEFEND is designed for aggressive cycles on hard soil and mud conditions. The level of protection is optimized for hard rock and very abrasive surfaces

MICHELIN GROUP -
Product Manager

⁽¹⁾ On the summit, Internal comparison between 29.5R25 MICHELIN® XTRA Defend and 29.5R25 MICHELIN® X®-SUPER TERRAIN™+, measurement certified by the Michelin® Center of technology
⁽²⁾ Internal comparison between 29.5R25 MICHELIN® XTRA Defend and 29.5R25 MICHELIN® X®-SUPER TERRAIN™+, measurement certified by the Michelin® Center of technology.

LEARN MORE

ON THE WEB
business.michelin.co.uk

TESTIMONIALS
youtube.com

UPDATED JANUARY 2023

TOOLS

BEYOND ROAD SELECTOR
beyond-road.selector.michelingroup.com/CO

CONTACT

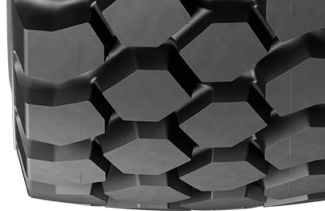
Please contact your local sales representative for more information.



MICHELIN

MICHELIN XTRA DEFEND

TECHNICAL CHARACTERISTICS



DESCRIPTION	CAI [MSPN]	Max. dist./ hour km [mile]	TKPH [TMPH]	e mm [in]	D mm [in]	R' mm [in]	RC mm [in]	Tread depth mm [32rd]	Dual spacing mm [in]	Cap liter [gal]	Measuring recommended rim	Other approved rims <small>See end of document for more options</small>
23.5 R 25 E4** 185B TL	923499 63502	26 16.2	192 132	615 24.2	1628 64.1	731 28.8	4906 193.1	54 68	-	658 173.8	19.50/2.5	-
Bar	2	2.5	3	3.5	3.75	4	4.5	5	5.5			
<i>Psi</i>	29	36	44	51	54	58	65	73	80			
Machine - use kg - lbs	ARTICULATED DUMP TRUCK											
STANDARD	5650 12458	6380 14068	7100 15656	7800 17199	8175 18026	8550 18853	9250 20396	9950 21940	10350 22822			
MOUNTING ACCESSORIES AVAILABLE	Recommended rim		Tubeless bead seal [CAI]		Rubber ring [CAI]		Tube [CAI]		Flap [CAI]			
	19.50/2.5		OR 3-25 SULLA [553200]		N/A		25 WAM 18-24/25 [?]		18-24/25 [551612]			
26.5 R 25 E4 193B TL	740832 61680	24 14.9	221 151	698 27.5	1740 68.5	775 30.5	5228 205.8	59.5 75	-	870 229.9	22.00/3.0	22.00/3.0 IF
Bar	2	2.5	3	3.25	3.5	4	4.5	5	5.5			
<i>Psi</i>	29	36	44	47	51	58	65	73	80			
Machine - use kg - lbs	ARTICULATED DUMP TRUCK											
STANDARD	6500 14333	7500 16538	8500 18743	9000 19845	9500 20948	10500 23153	11500 25358	-	-			
MOUNTING ACCESSORIES AVAILABLE	Recommended rim		Tubeless bead seal [CAI]		Rubber ring [CAI]		Tube [CAI]		Flap [CAI]			
	22.00/3.0		OR 3-25 SULLA [553200]		N/A		N/A		N/A			
750/65 R 25 E4 190B TL	209221 32588	26 16.2	220 151	733 28.9	1628 64.1	720 28.3	4878 192	55 69.3	-	-	24.00/3.0	22.00/3.0 25.00/3.0
Bar	2	2.5	3	3.25	3.5	4	4.5	5	5.5			
<i>Psi</i>	29	36	44	47	51	58	65	73	80			
Véhicule - usage kg - lbs	ARTICULATED DUMP TRUCK											
STANDARD	-	7350 16207	8400 18522	8950 19735	9500 20948	10600 23373	-	-				
MOUNTING ACCESSORIES AVAILABLE	Recommended rim		Tubeless bead seal [CAI]		Rubber ring [CAI]		Tube [CAI]		Flap [CAI]			
	24.00/3.0		OR 3-25 SULLA [553200]		N/A		N/A		N/A			
29.5 R 25 E4** 200B TL	940473 07272	22 13.7	246 169	773 30.4	1862 73.3	826 32.5	5586 219.9	65 81.9	-	1142 301.7	25.00/3.5	-
Bar	2	2.5	3	3.25	3.5	4	4.5	5	5.5			
<i>Psi</i>	29	36	44	47	51	58	65	73	80			
Machine - use kg - lbs	ARTICULATED DUMP TRUCK											
STANDARD	7800 17199	9050 19955	10300 22712	10900 24035	11500 25538	12750 28114	14000 30870	-	-			
MOUNTING ACCESSORIES AVAILABLE	Recommended rim		Tubeless bead seal [CAI]		Rubber ring [CAI]		Tube [CAI]		Flap [CAI]			
	25.00/3.5		OR 3-25 SULLA [553200]		N/A		25 YBAM 19-25 [?]		19-25 [102610]			

LEARN MORE

ON THE WEB
business.michelin.co.uk

TESTIMONIALS
youtube.com

UPDATED NOVEMBER 2022

TOOLS

BEYOND ROAD SELECTOR
beyond-road.selector.michelingroup.com/co

CONTACT

Please contact your local sales representative for more information.



MICHELIN

MICHELIN XTRA DEFEND

TECHNICAL CHARACTERISTICS



DESCRIPTION	CAI [MSPN]	Max. dist./ hour km [mile]	TKPH [TMPH]	e mm [in]	D mm [in]	R' mm [in]	RC mm [in]	Tread depth mm [32rd]	Dual spacing mm [in]	Cap liter [gal]	Measuring recommended rim	Other approved rims <small>See end of document for more options</small>
33.25/80R29 E4** 209B TL	900079	26 16.2	385 264	857 33.7	2067 81.4	922 36.3	6215 244.7	69 86.9	-	1542 407.4	27.00/3.5	-
Bar	2	2.5	3	3.5	4	4.25	4.5	5	5.5	6.0		
<i>Psi</i>	29	36	44	51	58	62	65	73	80	87		
Machine - use kg - lbs	ARTICULATED DUMP TRUCK											
STANDARD	9500 20948	11000 24255	12500 27563	14000 30870	15500 34178	16300 35942	17000 37485	18500 40793	19250 42446	20000 44100		
MOUNTING ACCESSORIES AVAILABLE	Recommended rim		Tubeless bead seal [CAI]		Rubber ring [CAI]		Tube [CAI]		Flap [CAI]			
	27.00/3.5		OR 3-29 SULKY [553202]		N/A		N/A		N/A			
875/65R29 E4 203B TL	992223 76545	22 13.7	273 187	872 34.3	1884 74.2	823 32.4	5620 221.3	59.5 75	-	1330 351.4	27.00/3.0	27.00/3.5 28.00/3.5
Bar	2	2.5	3	3.5	4	4.5						
<i>Psi</i>	29	36	44	51	58	65						
Machine - use kg - lbs	ARTICULATED DUMP TRUCK											
STANDARD	9000 19845	10600 23373	12250 27011	13800 30429	15500 34178	17100 37706						
MOUNTING ACCESSORIES AVAILABLE	Recommended rim		Tubeless bead seal [CAI]		Rubber ring [CAI]		Tube [CAI]		Flap [CAI]			
	27.00/3.0		OR 3-29 SULKY [553202]		N/A		N/A		N/A			

LEARN MORE

ON THE WEB
business.michelin.co.uk

TESTIMONIALS
youtube.com

UPDATED NOVEMBER 2022

TOOLS

BEYOND ROAD SELECTOR
beyond-road.selector.michelingroup.com/co

CONTACT

Please contact your local sales representative for more information.

