

# **MICHELIN® X<sup>®</sup>TRA DEFEND™**

*DESIGNED TO RESIST*



[business.michelin.co.uk](https://business.michelin.co.uk)





# MICHELIN® X®TRA DEFEND™

80 SERIES - 23.5 R25, 26.5 R25, 29.5 R25, 33.25 R29

## EXTENDED TIRE LIFE AND EXCEPTIONAL RESISTANCE TO AGGRESSION



ARTICULATED  
DUMP TRUCK



### BETTER AGGRESSION RESISTANCE



#### 1 +24.7%<sup>(2)</sup> MINIMUM

More mass metal

#### 2 REINFORCED CASING AND PLYS

#### 3 +15%<sup>(1)</sup>

Thicker sidewalls

#### PUNCTURE RESISTANCE UP TO: <sup>(3)</sup>

172MM



MICHELIN®  
X®TRA DEFEND™

156MM



COMPETITOR 1



### +15% WEAR LIFE<sup>(4)</sup>

■ Deeper tread depth<sup>(5)</sup>

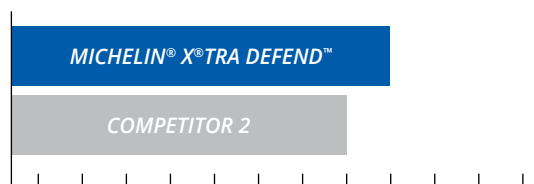


65 mm

**+14% VS COMPETITOR 2**

57 mm for competitor 2

■ More volume of rubber to be worn



**+10%<sup>(6)</sup> COMPARED TO  
COMPETITOR 2**



### DESIGNED TO BE RETREADABLE AND SUSTAINABLE

**1st win:** the first tire life with an excellent wear resistance thanks to the natural rubber B4 compound.

**2nd win:** the second tire life with the ability to retread the tire or extra money coming from the sell of the Michelin casing.



### EXCELLENT PRODUCTIVITY

Please see below our ton per kilometers per hour data for the following tires:

23.5 R25	MICHELIN XTRA DEFEND E4 with	192 <sup>(7)</sup>	TKPH
26.5 R25	MICHELIN XTRA DEFEND E4 with	221 <sup>(7)</sup>	TKPH
29.5 R25	MICHELIN XTRA DEFEND E4 with	246 <sup>(7)</sup>	TKPH
33.25 R29	MICHELIN XTRA DEFEND E4 with	385 <sup>(7)</sup>	TKPH

23.5 R 25	MICHELIN XTRA DEFEND E4 TL **	185B	CAI 923499
26.5 R 25	MICHELIN XTRA DEFEND E4 TL **	193B	CAI 740832
29.5 R 25	MICHELIN XTRA DEFEND E4 TL **	200B	CAI 940473
33.25 R29	MICHELIN XTRA DEFEND E4 TL **	209B	CAI 900079

(1) Compared to 29.5 R 25 MICHELIN® X®-SUPER TERRAIN™+. Measurements certified by Michelin Center of Technology.

(2) On the summit, compared to 29.5 R 25 MICHELIN® X®-SUPER TERRAIN™+. Measurement certified by Michelin Center of Technology.

(3) Test certified by Michelin Center of Technology, conducted at the Mining Testing Center in Almeria, Spain, in April 2017. Comparison of 29.5 R 25 MICHELIN® X®TRA DEFEND™ with competitor 1, same size.

All tires followed the same protocols and configuration, same number of tires tested. Test done with a vehicle suppressing machine effect in order to highlight tires gaps. Tests conditions: 14000kg of load, at 4,5 bar pressure for MICHELIN® X®TRA DEFEND™ at 5 bars for competitor 1.

(4) Compared to 29.5 R 25 MICHELIN® X®-SUPER TERRAIN™+ field tests measurements certified by the Michelin Center of Technology, from 2012 to 2016.

(5) Measurement certified by the Michelin Center of Technology, using XAO software, comparison of 29.5 R 25 MICHELIN® X®TRA DEFEND™ with competitor 2, same size.

(6) Measurement certified by the Michelin Center of Technology, Faro method, Sculpture 3D with laser, comparison of 29.5 R 25 MICHELIN® X®TRA DEFEND™ with competitor 2, same size.

(7) See the 2022 MICHELIN technical databook Earthmover Tires.

# MICHELIN® X®TRA DEFEND™

65 SERIES - 750/65 R 25, 875/65 R29



## ALL OF THE MICHELIN'S 80 SERIES BENEFITS AND MORE



MICHELIN XTRA DEFEND  
80 SERIE



• **HIGHER  
FOOTPRINT**

• **HIGHER  
AIR VOLUME**



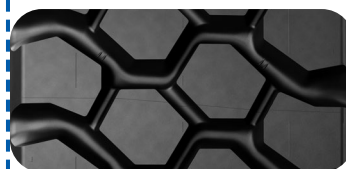
MICHELIN XTRA DEFEND  
65 SERIE

• **HIGHER LOAD  
CAPACITY**

up to 1500 kg / 3307 lbs at a  
lower pressure<sup>(8)</sup>

### HIGHER FOOTPRINT

- More tread rubber to protect your tire and ensure its retreadability
- Better traction in soft soils



**+21%<sup>(9)</sup> FOOTPRINT SURFACE**



### HIGHER AIR VOLUME

- Better comfort for the operator with up to 14%<sup>(10)</sup> or more shock absorption
- Better flotation in soft soils

### Corresponding sizes between 65 series and 80 series

65 SERIES				80 SERIES			
750/65 R25 XTRA DEFEND	E4 TL ** 190B	CAI 209221	→	23.5 R25 XTRA DEFEND	E4 TL ** 185B	CAI 923499	
875/65 R29 XTRA DEFEND	E4 TL ** 203B	CAI 992223	→	29.5 R25 XTRA DEFEND	E4 TL ** 200B	CAI 940473	

<sup>(8)</sup> Internal comparison between MICHELIN® X®TRA DEFEND™ 875/65 R29 vs 29.5 R25. See the 2022 MICHELIN technical databook Earthmover tires.

<sup>(9)</sup> Internal comparison between MICHELIN® X®TRA DEFEND™ 875/65 R29 vs 29.5 R25. Measurement certified by the Michelin Center of Technology.

<sup>(10)</sup> Internal comparison between MICHELIN® X®TRA DEFEND™ 875/65 R29 vs 29.5 R25. See the 2022 MICHELIN technical databook Earthmover tires.