

# MICHELIN XTLA

An L2/G2 tyre for wide-ranging use on yielding terrain

Exceptional traction

Life

Adhesion



# MICHELIN XTLA

## An L2/G2 tyre for wide-ranging use on yielding terrain

SIZES	TREAD DEPTH	
	mm	32 <sup>nd</sup> inch
15.5 R 25 TL *	25	31,5
17.5 R 25 TL *	28	35,3
20.5 R 25 TL *	31	39,1
23.5 R 25 TL *	34	42,8

### ➤ EXCEPTIONAL TRACTION

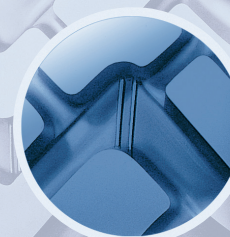
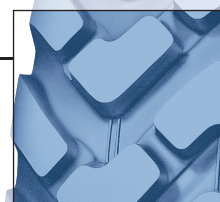
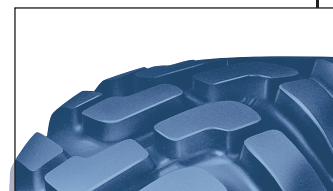
■ A non directional, aggressive tread with distinct, well defined lugs, produces exceptional traction and stability on yielding terrain

### ➤ LIFE

- An open block pattern and large contact area guarantees regular tread wear
- The design of the shoulder/sidewall intersection offers improved damage resistance

### ➤ ADHESION

■ A well defined block pattern with a high void to block ratio assures an excellent level of adhesion



Measuring point location

855 200 507 RCS Clermont-Ferrand  
Edition 1 6688 Gb (2011-01) - Ref: 0508115  
fusium 121338 - Tel: 04 73 25 25

REPAIRABILITY AND RETREADABILITY MAXIMIZED THANKS TO THE EXTREME RELIABILITY OF THE CASING (##)

(##) provided that the worn tyre answers criteria of retreading and/or repair.

#### BENEFITS OF THE MICHELIN® RADIAL TECHNIQUE

- longer tyre life
- better traction on all types of surface
- lower fuel consumption
- improved comfort
- increased resistance to punctures / flats
- increased heat resistance

