



Michelin Retread Technologies



REGIONAL TRANSPORT

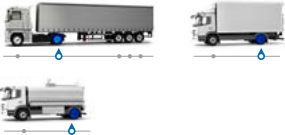


THE MULTI-PURPOSE SOLUTION



MULTI D

DRIVE 



SAVINGS

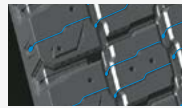
Up to **+15%*** mileage vs. RECAMIC MULTIWAY D and XW4S.

(*) Results based on internal simulation tool done by Michelin in October 2020 comparing the RECAMIC MULTI D versus RECAMIC XW4S 260mm tread width retreaded in 315/80R 22.5. Results may vary according to road and weather conditions.

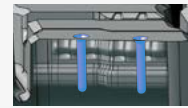
SAFETY

Transversal "Raindrops" sipes which emerge over the tyre's life and allow an optimised grip even when tyre is worn at 2/3. "TowerPump"[®] sipes for good braking and motricity on slippery roads.

MICHELIN patent



"Raindrops" sipes



"TowerPump"[®] sipes

295/80 R 22.5
305/70 R 22.5
315/70 R 22.5
315/80 R 22.5

MAXIMIZED ROBUSTNESS FOR VERSATILE USAGE



MULTI HD D

DRIVE 



SAVINGS

Up to **+10%*** mileage vs. RECAMIC XDE2+.

(*) Results based on internal simulation tool done by Michelin in October 2020 comparing the RECAMIC MULTI D versus RECAMIC XW4S 260mm tread width retreaded in 315/80R 22.5. Results may vary according to road and weather conditions.

ROBUSTNESS/TRACTION

1. High tread aggression resistance with robust tread blocks.
2. Reinforced sipes design for better aggression resistance: double wave & bayonet joint.
3. V transversal grooves for better traction.

MICHELIN patent



11 R 22.5
12 R 22.5
13 R 22.5
275/70 R 22.5
295/80 R 22.5
305/70 R 22.5
315/70 R 22.5
315/80 R 22.5

FOR 7.5 TO 12 T LIGHT TRUCKS




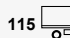
XDE2 LT

DRIVE 



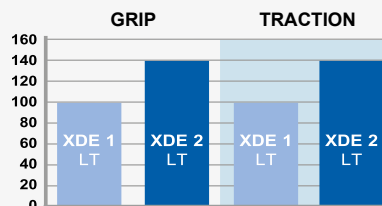
MILEAGE PERFORMANCE

With its self-blocking "double-wave" sipes, the XDE2 LT range gives you more mileage.

XDE1 LT	100	
XDE2 LT	115	




GRIP/TRACTION

Throughout the tyre's life, the "double-wave" sipes guarantee very good grip and excellent traction in all types of weather conditions.

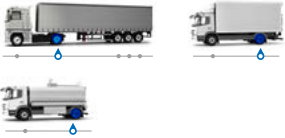


9.5 R 17.5
10 R 17.5
205/75 R 17.5
215/75 R 17.5
225/75 R 17.5
235/75 R 17.5



XDE2+ (1) 
XDE2+ MT (2)  

DRIVE



MILEAGE PERFORMANCE

For regional and national use, the rubber compound and the optimised tread depth give even wear and excellent mileage performance.

(1) For over 16 T heavy goods vehicles
 (2) For 11 to 16 T medium heavy goods vehicles

GRIP/TRACTION

On wet roads, the block tread pattern provides maximum efficiency both when driving and braking.

VERSATILITY

The rubber compound and tread are adapted to the most varied conditions of use: winding roads, hilly roads, town use...

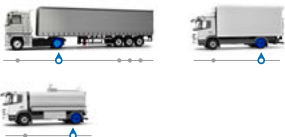
XDE2+
 10.00 R 20
 11 R 22.5
 12 R 22.5
 275/80 R 22.5

XDE2+ MT
 245/70 R 19.5
 265/70 R 19.5
 285/70 R 19.5
 305/70 R 19.5
 255/70 R 22.5



S60 XW4S 
XW4S  

DRIVE



MULTIPURPOSE

Use on all roads and in all weather conditions allowing increased productivity in complete safety.

LONG LASTING GRIP

Deeper "double-wave" sipes allow a great improvement in grip when half-worn.

MICHELIN patent



"double-wave" sipes

MILEAGE PERFORMANCE

The effect of the sipes (less mobile tread pattern) and the optimized volume of rubber to be worn away result in an increased mileage performance.

ADHERENCE IN WINTER CONDITIONS

Ice	★★★	Packed snow	★★★
Heavy snow	★★★	Rain/soft snow	★★★★
★★★★ Excellent ★★★ Very good ★ Good			

S60 - RELIABILITY

Reduces overheating in the shoulder area.

MICHELIN patent



Recamic S60 Convex tread



Standard tread

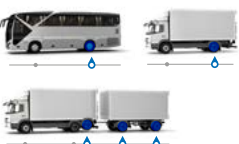
S60 XW4S
 295/60 R 22.5
 315/60 R 22.5

XW4S
 12 R 22.5
 275/70 R 22.5
 295/80 R 22.5
 305/70 R 22.5
 315/70 R 22.5
 315/80 R 22.5



XZE2

MULTI POSITIONS  



RELIABILITY

The shape of the groove limits the retention of stones and extends the life of the casing.

TRANSVERSAL GRIP

The four longitudinal grooves guarantee excellent transverse grip in all weather conditions.

VERSATILITY

The rubber compound and tread are adapted to the most varied conditions of use: national, regional or urban roads; coaches or trucks; drive or trailer axle.

12.00 R 20
 11 R 22.5
 12 R 22.5
 13 R 22.5
 275/70 R 22.5
 275/80 R 22.5
 295/80 R 22.5
 305/70 R 22.5
 315/80 R 22.5



XTE2 B M+S
XTE2 B

TRAILER



RELIABILITY

Michelin wing tread patented technology guarantees exceptional resistance to the effects of scrubbing.

MILEAGE PERFORMANCE

Is provided by a higher abrasive resistance compound and the optimised volume of rubber to wear. Maximum tread rubber volume and a specifically designed tread pattern give you the longest tyre life.

XTE2 B M+S

- 265/70 R 19.5
- 285/70 R 19.5
- 275/70 R 22.5
- 275/80 R 22.5
- 425/65 R 22.5
- 445/65 R 22.5

XTE2 B

- 9.5 R 17.5
- 235/75 R 17.5
- 245/70 R 17.5
- 245/70 R 19.5



MULTI T

TRAILER M+S



LONG LASTING

A new tread compound that permit to reduce the temperature of the shoulder in order to reduce the heat on these zones.

-7°C versus the RECAMIC XTE3B internal test.

SAFETY

A tread with the knowledge & expertise of Michelin: **very good transversal & longitudinal grip.**

EFFICIENCY

Improved potential of mileage for a reduction in costs per kilometer vs the RECAMIC XTE2 B & XTE3 B.



- 385/55 R 22.5
- 385/65 R 22.5

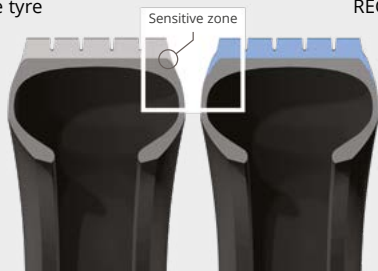
TRAILER EXCLUSIVE TECHNOLOGY

Michelin wing tread patented technology guarantees exceptional resistance to the effects of scrubbing.

WIND TREAD TECHNOLOGY

Standard tread for extra-large tyre

Wing tread RECAMIC



The joint between the belt and the tyre casing outside the sensitive zone.

TYRE SCRUB





WINTER SPECIALISTS

GOOD WINTER GRIP UNTIL LAST MILLIMETER

NEW



MULTI GRIP D

DRIVE 



GRIP/TRACTION

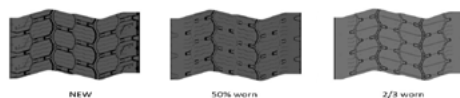
Throughout the tyre's life, the REGENION technology provides very solid grip and excellent traction in winter conditions (ice, snow and rain/soft snow).



ADHERENCE IN WINTER CONDITIONS

Good winter grip until last millimeter thanks to self-regenerating tread blocks with raindrops sipes.

Excellent removal mileage



Ice	★★★	Packed snow	★★★★
Heavy snow	★★★★	Rain/soft snow	★★★★
★★★★ Excellent	★★★ Very good	★★ Good	

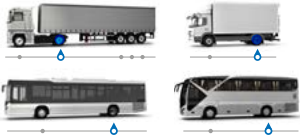
12 R 22.5
295/80 R 22.5
305/70 R 22.5
315/70 R 22.5
315/80 R 22.5

Coming soon
11 R 22.5
275/70 R 22.5



XDS

DRIVE 



MILEAGE PERFORMANCE

In regional use, the deep tread and the large volume of rubber provide high mileage performance.

TRACTION/MOBILITY

The block tread with deep open grooves facilitates the removal of snow.

TRANSVERSAL GRIP

The block tread patterns provide excellent transversal grip and a good road holding.

ADHERENCE IN WINTER CONDITIONS

Ice	★ ★ ★	Packed snow	★ ★ ★
Heavy snow	★ ★ ★	Rain/soft snow	★ ★ ★

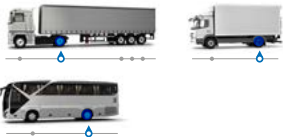
★ ★ ★ Excellent ★ ★ Very good ★ Good

245/70 R 17.5
 265/70 R 17.5
 245/70 R 19.5
 285/70 R 19.5
 11.00 R 20
 335/80 R 20
 11 R 22.5
 12 R 22.5
 275/70 R 22.5
 275/80 R 22.5
 295/80 R 22.5
 305/70 R 22.5
 315/70 R 22.5
 315/80 R 22.5



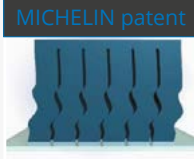
XDW ICE GRIP

DRIVE 



TRACTION/ BRAKING

More than 2000 "double-wave" sipes



"double-wave" sipes

TRANSVERSAL GRIP

The compound used and the large number of sipes in the tread, with many circumferential grooves that themselves generate sharp edges enable the tyre to resist lateral movement.

DRIVING COMFORT

The flexible shoulders ease the effects of ruts and tracing (surface condition of ice or packed snow after the snowplough has passed).

ADHERENCE IN WINTER CONDITIONS

Ice	★ ★ ★	Packed snow	★ ★ ★
Heavy snow	★ ★ ★	Rain/soft snow	★ ★ ★

★ ★ ★ Excellent ★ ★ Very good ★ Good

12 R 22.5
 275/70 R 22.5
 295/80 R 22.5
 305/70 R 22.5
 315/70 R 22.5
 315/80 R 22.5



MULTI WINTER T

TRAILER 



GRIP

Highly siped central ribs guarantee good grip on slippery surfaces (ice and snow).

ROBUSTNESS

Robust outer shoulders stand up to the lateral scuffing of trailers.

MILEAGE PERFORMANCE

More rubber to be worn away means a higher mileage performance. Deep treads enable you to drive on snow-covered ground.



"double-well" technology "wing tread" technology "double-waves" sipes

385/55 R 22.5
 385/65 R 22.5

WHY RETREAD?

One retreaded tyre means:

RIGHT FOR ECONOMICS



EXCELLENTE MILEAGE

with the same tyre



A retreaded tyre is

40% CHEAPER

than an equivalent new tyre⁽¹⁾.

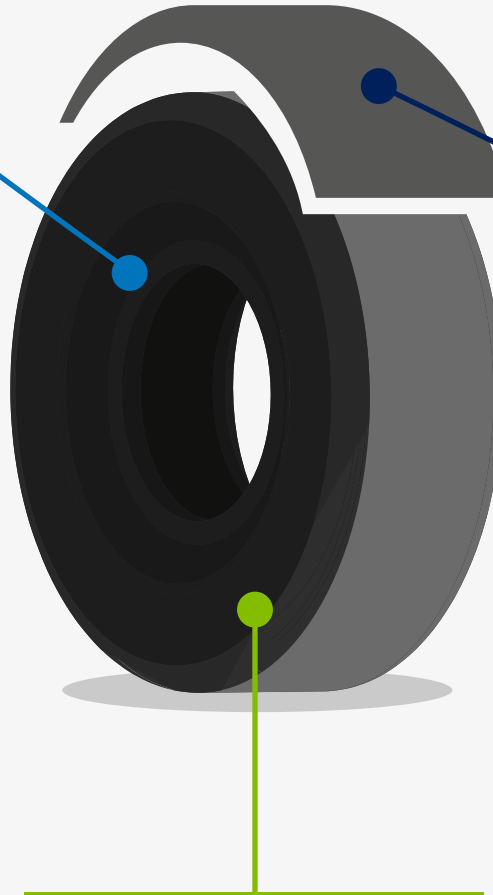
RIGHT FOR JOBS



4.3

TIMES MORE JOBS

created through retreading the tyres⁽⁴⁾



RIGHT FOR PLANET



115 Kg OF CO₂

not released into the atmosphere⁽²⁾



50 Kg OF RAW MATERIAL

not consumed⁽³⁾



70%

EXTRACTION OF NATURAL RESOURCES SAVED⁽⁴⁾

In terms of energy a retreaded tyre can on its own save⁽⁴⁾

29% of soil use

21% of air pollution

19% of water consumption

(1) Michelin Internal study performed in 2022 by Competitiveness analysis tool performed on Europe perimeter comparing premium new tyre vs. RECAMIC.

(2) The CO₂ impact of a retreaded tyre is linked to the material saving, or 115 kg of CO₂ representing 50 kg of raw material savings, at a rate of 2.3 kg of CO₂* per kg of raw materials. *Equivalence between CO₂ and a litre of fuel or kilogram of raw material is calculated in this way: The emissions factor of 3.24 kg of CO₂ for 1 litre of diesel comes from the life cycle assessment conducted by ADEME for pure diesel. It includes emissions during the diesel production stages (17%) and during its combustion (83%). Source: ADEME, Study "Well to wheel - JEC", v4, July 2014. The emissions factor of 2.3 kg of CO₂ for 1 kg of tyre comes from the life cycle assessment calculations for production of a tyre cradle to gate), conducted internally by Michelin using the calculation rules developed by the tyre manufacturing profession (TIP). It includes stages including extraction of raw materials, transportation, manufacturing, and distribution.

Source: UL Environment Standard, "Product Category Rules for preparing an Environmental Product Declaration for the product category: Tires, v3.05, February 2022."

(3) A new tyre weighs 70 kg on average. A new tyre ready to be retreaded weighs 50 kg on average.

(4) Data extracted from the E&Y study "L'impact socio-économique du rechapage poids lourd en France et en Europe - L'économie circulaire du pneu en danger" in October 2016 - Comparative study of non-retreadable entry-level tyre/retreaded tyre - use of land for growing rubber trees - air pollution measured by fine particle emissions.

THE RECAMIC RANGE



LONG DISTANCE TRANSPORT

- Motorways and major trunk roads
- Minimal braking and accelerating



REGIONAL TRANSPORT

- Long distances on trunk and regional roads with frequent braking and accelerating
- Shorter distances on regional journeys with frequent stops
- Access to loading and unloading points on slightly aggressive ground
- Difficult weather conditions (rain, snow, ice)



WORKSITE TRANSPORT

- Driving generally over short distances and on all types of road
- Access to difficult loading or unloading points
- Requires off-road traction



COACH-INTERCITY TRANSPORT

- Long distances on trunk and regional roads with frequent braking and accelerating
- Shorter distances on regional journeys with frequent stops



URBAN TRANSPORT

- Driving in urban areas with very frequent stops (Buses, waste trucks, roadwork vehicles, etc)

ADVICE FOR RECAMIC RETREADED TYRES

Fit Recamic retreaded tyres on the rear axles of motor vehicles. Recamic tyres can be fitted in all axle positions for trailers and semi-trailers.

